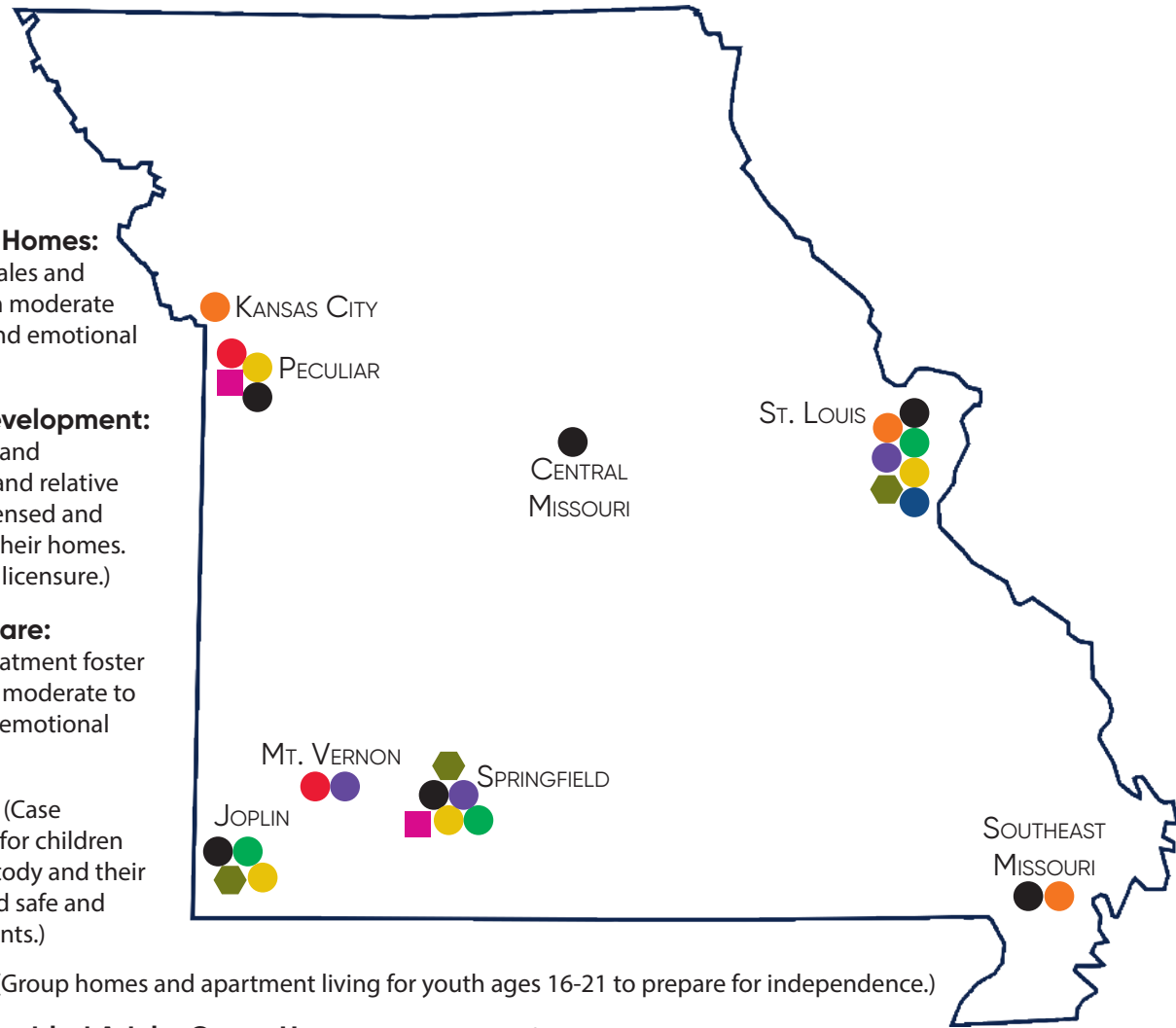


## Ministry Locations



- **Therapeutic Group Homes:** (Residential care for males and females ages 6-21 with moderate to severe behavioral and emotional needs.)
- **Family Resource Development:** (Recruitment, training and preparation for foster and relative families to become licensed and to care for children in their homes. Provides support after licensure.)
- **Treatment Family Care:** (Intensively trained treatment foster parents for youth with moderate to severe behavioral and emotional needs.)
- **Family Foster Care:** (Case management services for children and youth in state custody and their families to work toward safe and permanent environments.)
- **Transitional Living:** (Group homes and apartment living for youth ages 16-21 to prepare for independence.)
- **Developmentally Disabled Adults Group Homes:** (Group living for developmentally disabled adults.)
- **Pregnancy Services:** (On-campus and in-home services for minors and adults.)
- **Counseling Services:** (Counseling for individuals, couples and families – in person at the Bridgeton Counseling Center and on-line via teletherapy.)
- **Church Engagement:** (Support and resources to promote effective ministry to children, youth and families in local communities. State-wide services through offices in Springfield, Joplin and Bridgeton.)

**Anti-Trafficking Services:** (Group homes for minor girls and adult women who are survivors of human trafficking.) - There is an East and West location in the state but location not listed for security.

## 2022 Annual Report MBCH Family of Corporations

MBCH Properties • MBCH Foundation  
The LIGHT House • MBCH Children & Family Ministries

**Lives Changed  
in 2022**  
through  
MBCH Children & Family Ministries  
and The LIGHT House



Children, youth and families served

They come to us hurting, broken, confused, hopeless, frightened and anxious. We offer them hope, healing and restoration. We cannot provide those things through our own efforts. Hope, healing and restoration come from being loved and cared for and being introduced to Jesus Christ.

There are thousands of children, youth and families all around us who need to know that God sees them as acceptable, valuable, forgivable, lovable and capable. As we work together, we are helping them move beyond their past and learn they have a bright future.



Decisions for Christ by children and youth in Residential programs

This Annual Report of Missouri Baptist Children's Home and its affiliates demonstrates some of the impact we are having on the lives of children, youth and families. The statistics can look impressive but they are inadequate to convey the difference we are making in the lives represented by the numbers. We invite you to visit our website (mbch.org) to read stories of changed lives we have been privileged to touch.



Days of care were provided to children, youth and families

God blessed our ministries greatly this year through the generosity and commitment of our donors. You provided the necessary financial resources to fund our ministries for 2022. Thank you. Please know that MBCH strives to be a good steward of all of God's blessings.



# CHILDREN & FAMILY MINISTRIES

## 2022 Statistical Report

### Counseling Center

47 Agency-Based Clients



34 Community-Based Clients



349

Foster/Adoptive/Relative/Kinship Homes Maintained



23

Youth served in Therapeutic Group Homes



47

Clients served through Transitional Living



276

Mothers and Babies served through Pregnancy Services



88

Youth served in Treatment Family Care

448

Youth served in Family Foster Care



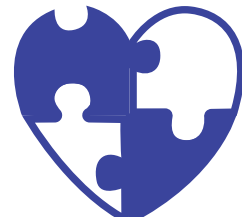
22

Clients served through Anti-Trafficking Services



475

Home Studies Conducted



16

Clients served through Developmentally Disabled Services

### Church Engagement



84

Churches served by Church Engagement

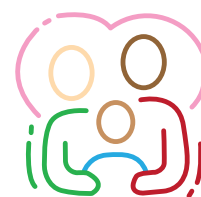
690

Trained in Stewards of Children



34

Other Groups served by Church Engagement



2,533

Youth and families served



217,275

Days of care were provided to children, youth and families



190

"Forever Families" were found for children.



# THE LIGHT House

## 2022 Statistical Report

19

Maternity Home Clients  
13 Mothers, & 6 Infants



34,827

Packages of diapers and other baby items distributed



42

Outreach Participants

9,338

Days of care provided to clients, babies and toddlers



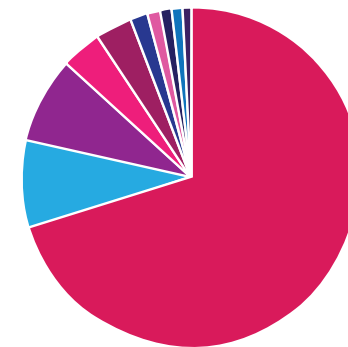
12 Families Ready to Adopt

12



19

In-Home Services

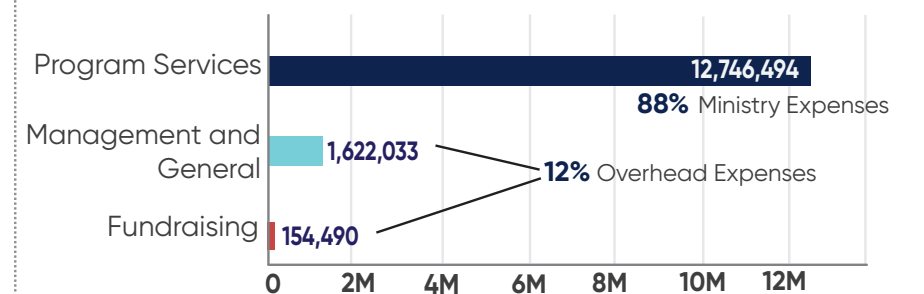


2022 Total Revenue/Support  
**\$16,503,298**

- Program Services: \$8,513,795
- Contributions: \$3,561,544
- Endowment/Investments: \$2,174,969
- Cooperative Program: \$672,763
- Gifts from Churches: \$513,961
- Other Revenue: \$429,169
- Birthday Offering: \$217,808
- Bequests/Wills: \$188,746
- Missouri Missions Offering: \$135,412
- Special Events: \$95,131

### MBCH Family of Corporations 2022 Financial Report

#### 2022 Expenses



Total Expenses: **\$14,523,017**

Unrealized Loss on Investments: **\$2,658,293**

Revenue Less Expenses: **(\$678,012)**