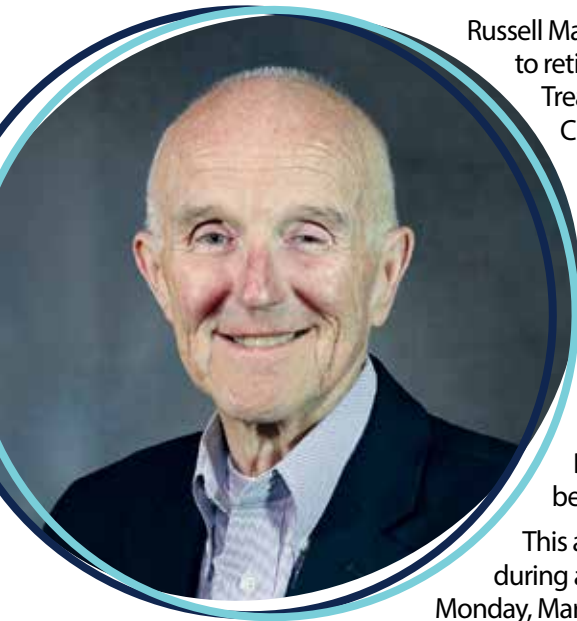


Russell Martin Announces Intention to Retire



Russell Martin has announced his intention to retire from the role of President and Treasurer of the Missouri Baptist Children's Home, effective mid-year 2024. Martin will provide continued leadership and support throughout a time of transition until his retirement. Andy Helton, currently serving as Vice President, will assume the role of Executive Vice President and responsibility for day-to-day operations fall 2023. The MBCH Board of Trustees is taking steps to begin the presidential search process.

This announcement was delivered during an all-staff video conference Monday, March 20.

"Upon his retirement, Russ will have completed 47 years of committed work and excellent service to the Children's Home. His passionate-care for the children is well known, he is loved and respected across the state and amongst his peers nationwide...We are blessed to have been given a longer notice which offers ample time for a smooth and efficient transition of leadership." - Chuck Easter, Chairman MBCH Board

"The work is never truly done, and that makes this a bittersweet decision. On the one hand I'm excited about the prospects of retiring, on the other I am saddened. Serving at MBCH is a tremendous platform in advocating for children, youth, and families." - Russell Martin, President and Treasurer MBCH

Russell began his career with MBCH in 1977 as the organization's first Business Manager. Not long after, he moved to the role of Coordinator of Business Services, then to Assistant Executive Director, Executive Vice President, and took presidential responsibilities for MBCH in 2014. He will have served as president for 10 years upon his retirement in 2024, during which time he oversaw many significant ministry developments. Among the most notable are the growth of MBCH's anti-trafficking work, the additions of The LIGHT House pregnancy resource ministry in Kansas City and the Branches at Brookline in Springfield, and the development of a new youth drop-in center (St. Louis) projected to open later this year.

The Martin Youth Center will open in the fall of 2023. This center for homeless teens in the Bridgeton area is located on the lowest level of the medical clinic on the Lowe-Frillman campus. Physical needs such as a shower, a place to wash clothes, be fed, etc. will be provided. There will be a computer lab, tutors, arts and crafts, games, and just a place to "hang out." A case manager will be available as needed to help assess needs and provide resources.

Additional MBCH accomplishments, including how the organization and all its affiliates have achieved and remained debt-free, will be highlighted throughout the coming year leading up to Russell's retirement.

For questions about the transition process or MBCH in general, please call (800) 264-6224 or visit our website at MBCH.org. More information about the Presidential search process is forthcoming.

Please join us in praying for Russell and the MBCH leadership as they work together, seeking God, to navigate these changes.

President's Corner

We are pleased to introduce a new look as we update the appearance of The Messenger and update our logo. It is our hope that these changes will help communicate to you our commitment to serving this timeless mission with a consistently fresh and energetic approach. This is God's ministry. We are privileged He has called us to serve Him by serving these children, youth, and families. This important mission requires nothing less than our earnest and innovative best.

Speaking of our best work, please take a moment to review the 2022 Annual Report included in this issue. Rejoice with us as we recount God's eternal impact upon so many lives, and please accept our gratitude for your prayers, encouragement, and support.

The needs, challenges, and struggles being experienced are great, but the God we serve is greater. We remain committed to serving Him by responding to the needs of children, youth, and families to make a lasting difference in their lives.

It is a humbling experience to serve as president of MBCH. However, it is time for me to retire and pass the baton on to the next leader. This is a decision that has not been made lightly, but it is the right one. I have every confidence that God is already working in the heart of the person He would have to take my place. Please pray for our board as they seek God's person who will build on the solid foundation of our faith and hope in Christ and continue the good work.

I look forward with excitement to see what the Lord will do in the days to come!

mbchNEWS

Bob Kenison, former president of MBCH and long-time leader within Missouri Baptist life, passed away recently.

Bob was a strong leader of MBCH for many years and endeared himself to people across the state. He truly enjoyed fundraising and oversaw the transition of the entity into providing not only enhanced residential services, but also community-based services in many parts of Missouri. Bob led this organization through a period of tremendous growth and change, and he was a true friend and mentor to our president. His impact continues.

Please keep Bob's wife Marjorie and the family in your prayers during this difficult time.

Visit the MBCH blog to view Bob's obituary, including a deeper look at his MBCH and other ministry endeavors.

Obituary – <https://www.tributearchive.com/obituaries/27657698/rev-raymond-robert-bob-kenison>

MBCH Has a New Look!



The "Why" for the new MBCH logo

Why the colors? Blues are generally viewed as calming colors that communicate peace and rest (many bedrooms are blue for this reason). The main logo colors are light blue and dark blue. The light blue is calming and the dark blue shows a quiet strength that can communicate "a calm in the storm." We are using an orangish red for the accent color (not in the logo but in the branding) to provide a playful pop of color. It isn't fire engine red which can feel like anger and even trigger PTSD in some but a red that feels more joyful and playful. This will add a nice contrast that will help add the impact of grabbing attention when needed.

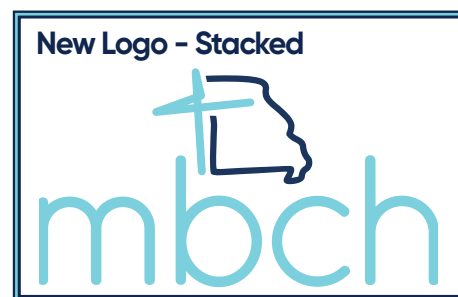
Why the logo choices? The cross represents MBCH's strong Christian foundation and philosophy in care and the state of Missouri communicates that the care is being provided for all of the state of MO.

Why the font? Lower case usage of the font is more approachable and the roundness of the font feels soft and comforting. The lack of sharp edges sends a more nurturing and less authoritative feeling. Capital letters are used for the affiliates to provide balance and undertones of foundational strength.

Why the change? There are many reasons but the largest reason is to not miscommunicate the organization and philosophy. First and foremost, this is a ministry that focuses on being Christ in a dark and hurting world primarily in Missouri. MBCH is focused on being HOPE to the hopeless and RESTORATION to the broken in some of the most hopeless and broken situations.

Why has *The Messenger* changed so much? Paper costs and mailing costs have inflated significantly and those changes appear to be here to stay. This "new look" for *The Messenger* is the first step in our efforts to steward MBCH resources wisely while still keeping you connected to the news and information you need.

What hasn't changed? The ministry, mission, and focus of MBCH hasn't changed. MBCH is aggressively working to minister to children and families in Missouri just like it has for the last 137 years. MBCH has been and will continue to be a ministry of Hope and Restoration to children and families despite how difficult the culture and circumstances may be.



Church Engagement

Ministry Spotlight

Stewards of Children - MBCH provides authorized facilitators for training to equip churches to have safe ministries for children and youth. We also consult to support good policy development through existing policy reviews and by providing resources with the obvious goal of preventing child abuse and keeping ministries safe.

CarePortal - Our partnership with CarePortal is allowing us to form networks of churches county by county that are connecting with vulnerable families so they can love and serve them in Jesus' name. In 2023, we are seeking to open 8 new counties and greatly expand in 2 counties. Going forward we hope to see more and more networks of serving churches in more counties across the state.

Contact MBCH at (800) 264-6224 to learn more about these as well as Open Table group mentoring, the Supervised Visitation ministry, Foster Adopt Ministry Development support, and Parent Support Volunteering.

Repeatedly the Bible instructs believers and churches to care for vulnerable people. James 1:27 talks about widows and orphans and Matthew 25 instructs us to serve the least of these. The church often lacks the expertise and the connection to serve vulnerable children, youth and families in their communities, but MBCH has both the expertise and the connections. Rather than have the church outsource this ministry to MBCH, the church and MBCH should be serving children and families together.

MBCH's Church Engagement Initiative seeks to partner with local churches around the state to develop thriving ministries that care for children, youth, and families. We support existing local church ministries by providing equipping opportunities and local connections so the church can serve children & families. MBCH has a variety of serving opportunities for the church to come alongside our ministry, and also be connected to local vulnerable families right in the communities surrounding their church, where they can be the hands and feet of Jesus.

When we talk about MBCH's mission, people often don't understand that most of these are cases of addiction, poverty, unsanitary living conditions, lack of supervision, or other concerns. Often these parents have a history of past trauma, are isolated in their communities, and lack the support of healthy relationships. This reinforces the importance of the "restoring families" component of our mission. With good people surrounding them with love and support, many of these families could be restored and thrive.

Your congregation, partnered with MBCH Church Engagement, can prevent children from going into foster care, we can develop and support more than enough foster/relative and adoptive families for children in the child welfare system, and we can connect with at-risk children and families in local communities and serve and love them in Jesus name.



Precious Hailey

Hailey couldn't keep her letters straight. They were always twisting sideways when she tried to write them, and every fairy tale she read came to a sudden stop long before she made it to the happy ending. She lived caught in a climax that never resolved. Eleven years old and beautiful, Hailey was bursting with anger and song.

She had lived on the streets more than once, so when she moved into MBCH Anti-Trafficking West, her instinct was still to run. No one had ever told her how to handle fear or conflict. Every time she spiraled out, she slipped through the window, back into the old lure of danger and hurt.

But Hailey loved people, too. In spite of past darkness, she still had so much daylight dancing inside with a smile for every new friend. MBCH staff found creative ways to build on her strengths instead of only focusing on what Hailey couldn't do yet. We encouraged her for every glimpse of kindness, hard work, and excitement, then built her a new sense of safety that helped her relax back into being a kid.

And we weren't the only ones loving Hailey. Our staff collaborated with her middle school teachers to build a customized behavior and educational plan that gave Hailey the structure and resources she needed. Over time, she started controlling negative outbursts, stayed in class more often, and began feeling connected to teachers and classmates instead of frustrated and alone. Every day after school, Anti-Trafficking West staff helped her drill sight words and untangle notes. Books and their knowledge were no longer closed off to her, like cliques; instead, they welcomed her in, making her feel capable and accepted. Hailey was on her way to reading, and every week she beamed with new success.

Of course she still got lost in setbacks. Some days, no one understood the language she used to shout her pain or how to answer in a way she could hear. The line between personal responsibility and PTSD runs paper-thin in places, and every staff member danced back and forth across its edges as we tried to both give her grace and push her to grow. Hailey wasn't the only one who learned to apologize. We had to step back sometimes, too, and assess how we might have responded better.

But something was clicking for her, despite the imperfections of everyone on her team—or maybe because of them. Every Wednesday and Sunday, Hailey couldn't wait to go to church and hear the next chapter of the story about grace. Many nights, she begged staff members to pray with her and do her bedtime devotions early. She knew about hungry prodigals and the one rebel sheep who slept far off in the cold. *Every time the good shepherd strolled back into the story, she leaned forward, electrified, like Jesus had just come and claimed her by name.*

And He had. She was His precious little Hailey, slowly finding her way to the plans He'd written for her before the world found its shape.

Children & Family Ministries

MBCH - CFM provides services mainly to children/youth in custody due to abuse/neglect and their families; our goal is to restore children to their biological families whenever possible. We also serve developmentally disabled adult clients with the goal of providing them as much independence as possible within the context of a family-like group home environment. Another population of adults that we serve are adult women recovering from being sexually trafficked in our Anti-Trafficking Services program (ATS).

Many people still think we are primarily a residential agency serving children/youth in beds on our campuses. This is an important piece of our work but, percentage-wise, it is very small - around 10%. Our work is done mainly through the following:

1. Case management services provided to children/youth and families.
2. Treatment Family Care (TFC): Providing services to youth in foster homes specifically trained to care for the needs of moderately to severely traumatized youth. We also provide TFC services to relatives (like grandparents or aunts/uncles) who have taken in youth they are related to and who need services in order to preserve that placement.
3. Family Resource Development: Recruiting, developing and managing the licenses of foster homes who take in children/youth who are in state custody. Developing and managing the licenses of relative homes who take in children/youth they are related to.

Another misconception is that we are looking to "rescue" children/youth from their biological homes and place them with foster/adoptive homes. Nothing could be further from the truth. While there are some examples of horrible situations, the majority of children/youth who come into custody are there because their parents have drug addiction and/or mental illness or are recovering from these things and are needing a place to live and/or a job so they can once again care for their children. The vast majority of these parents love their children - they just need treatment and help. We need foster parents who will walk alongside the biological family, minister to them, love them with the love of Christ, and work to help get kids back home when possible. Sometimes kids do need another family to take them in, adopt them, and love them, but we need adoptive families to remember that there will always be a biological family out there too, and to figure out safe and appropriate ways to maintain connections.

THE LIGHT House

Encouragement in Christ, Support, Care, Love

The LIGHT House is an affiliate of MBCH-CFM located in Kansas City with several programs in the area designed to support families in need. We offer residential (maternity home) programming to those aged 12-21 who are pregnant or parenting a child under the age of three. We have a fully licensed adoption program and work with both expectant mothers and waiting families. Our Outreach program, which has the greatest reach, provides regular classes focused on increasing parenting and life skills - this program is available to anyone in the community. Finally, our Home Based Pregnancy Service is available to those families who need additional support while residing in their homes. Through this service families receive information, supplies and encouragement during their child's first year of life.

As a way of introducing ourselves to the community, we host 2 meet and greet events per year at our office in KC - one in May and another in November. Additionally, we collaborate with other service ministries/organizations by hosting regular meet-ups; coffee and donuts are provided as we all gather to share resources and ideas through networking.

The work we do building stronger and more educated families is critical. We want to ensure that all families have access to not only education, but also resources. We love working with ALL members of the family unit to see them grow. To that end, we're proud to employ qualified Christian staff who can help our clients learn life skills AND about life in Him!

New Challenges: Our clients are coming to us with greater needs, greater trauma and decreased life and social skills.

New Opportunities: We are hoping to open a Transitional Living program in the KC area within the next year. Additionally, we are exploring the idea of offering our home visiting services in other parts of the state.

Please join us in prayer for these families, for those who serve them, and for our leadership as we address the work, challenges, and opportunities God has placed before us.

Needs:

- Diapers (bigger sizes)
- Wipes
- Baby Toiletries
- Diaper Rash Cream
- Mom Toiletries
- Reusable water bottles with lid
- Breast pump storage bags
- Sleep sacks size NB
- Nipple Cream for moms



THE LIGHT House



Caught in LOVE

At 17, Tina was already too old for her years—and too young to be a mom.

We met Tina as she was finishing treatment for alcohol addiction in a rehab facility. Even now, you could see the mistakes of her past in the scars on her arms and the shame that made her drift away from eye contact. She'd been running hard down the wrong road all her life, and she had no plans to change direction until the fourth pregnancy test in a row finally convinced her this was really happening. Following maternal instincts she never would've guessed she had, Tina checked herself into rehab two weeks later.

Now she was eight months pregnant, and heading home would reopen dangerous doors to temptation. We provided Tina with a free room at The LIGHT House Maternity Home and stuck by her side like family through the especially vulnerable time of newfound sobriety combined with childbirth. With an emotionally open community holding her steady, Tina didn't need to turn back to old methods of coping.

And then he was there: just a warm slip of satin bundled tight in her arms, clear-eyed like his future still had some sort of chance. Tina still didn't know what she was doing, but she knew that baby Everest deserved better than the chaos that had left her own childhood cluttered and confused.

So she stayed in the sanctuary of the maternity home, and she practiced new skills like swaddling and car seat safety. As Everest learned to lift his head and then roll over, Tina was learning everything from infant CPR and affordable nutrition to anger management and self-defense.

Tina didn't have time to go looking for her old life of addiction. When she wasn't working her retail job, she was advancing through The LIGHT House program to build the parenting, personal, and professional skills she'd need to provide her child with long-term stability. Now she could balance a checkbook, craft a resume, and recognize the signs of an abusive relationship before she was caught in the thick of overwhelming emotions. And on the nights when the baby simply wouldn't sleep and the grief came in howling with darkness and doubts, Tina whispered the verses she'd taped to her wall to remind her of who she was in Christ.

Fourteen months after a too-skinny pregnant kid had first kicked her Converse onto the carpet and made herself at home, Tina and her son were ready to move out. She had found nurturing childcare, been approved for an apartment, and even saved enough money to buy a car. She wasn't adrift; she had a complete community surrounding her still. But Tina was proud of her ability to care for her own family as a capable adult.

She wasn't an addict, a victim, or an underaged statistic. The baby was cared for—but so was Tina. Whatever she'd done, whoever she'd been, **she was caught in the love of a good Father God.**

The LIGHT House has a new logo!



2022 Annual Report MBCH Family of Corporations

MBCH Properties • MBCH Foundation
The LIGHT House • MBCH Children & Family Ministries

Lives Changed in 2022

through
MBCH Children & Family Ministries
and The LIGHT House



2,853

Children, youth and families served

They come to us hurting, broken, confused, hopeless, frightened and anxious. We offer them hope, healing and restoration. We cannot provide those things through our own efforts. Hope, healing and restoration come from being loved and cared for and being introduced to Jesus Christ.

There are thousands of children, youth and families all around us who need to know that God sees them as acceptable, valuable, forgivable, lovable and capable. As we work together, we are helping them move beyond their past and learn they have a bright future.



5

Decisions for Christ by children
and youth in Residential programs

This Annual Report of Missouri Baptist Children's Home and its affiliates demonstrates some of the impact we are having on the lives of children, youth and families. The statistics can look impressive but they are inadequate to convey the difference we are making in the lives represented by the numbers. We invite you to visit our website (mbch.org) to read stories of changed lives we have been privileged to touch.



226,613

Days of care were provided
to children, youth and families

God blessed our ministries greatly this year through the generosity and commitment of our donors. You provided the necessary financial resources to fund our ministries for 2022. Thank you. Please know that MBCH strives to be a good steward of all of God's blessings.



ambch

CHILDREN & FAMILY MINISTRIES 2022 Statistical Report

Counseling Center

47 Agency-Based Clients



34 Community-Based Clients



349

Foster/Adoptive/Relative/Kinship Homes Maintained



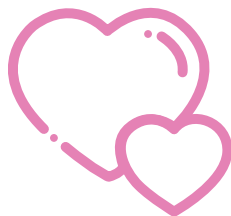
23

Youth served in Therapeutic Group Homes



47

Clients served through Transitional Living



276

Mothers and Babies served through Pregnancy Services



88

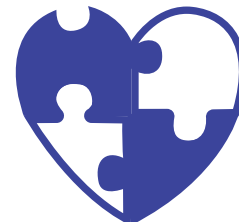
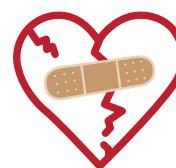
Youth served in Treatment Family Care

448

Youth served in Family Foster Care

22

Clients served through Anti-Trafficking Services



16

Clients served through Developmentally Disabled Services



475

Home Studies Conducted

Church Engagement



84

Churches served by Church Engagement

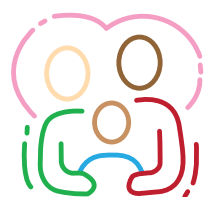
690

Trained in Stewards of Children



34

Other Groups served by Church Engagement



2,533

Youth and families served



217,275

Days of care were provided to children, youth and families



190

"Forever Families" were found for children.



THE LIGHT House

2022 Statistical Report

19

Maternity Home Clients
13 Mothers, & 6 Infants



34,827

Packages of diapers and other baby items distributed

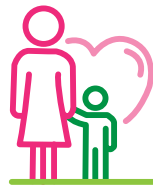


42

Outreach Participants

9,338

Days of care provided to clients, babies and toddlers



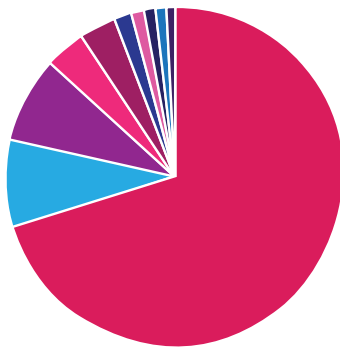
12

Families Ready to Adopt



19

In-Home Services



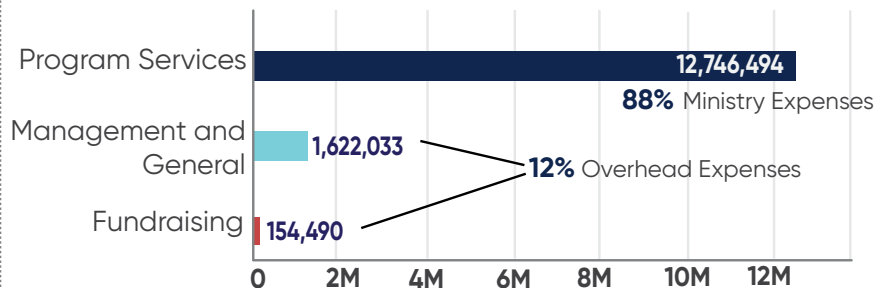
2022 Total Revenue/Support

\$16,503,298

- Program Services: **\$8,513,795**
- Contributions: **\$3,561,544**
- Endowment/Investments: **\$2,174,969**
- Cooperative Program: **\$672,763**
- Gifts from Churches: **\$513,961**
- Other Revenue: **\$429,169**
- Birthday Offering: **\$217,808**
- Bequests/Wills: **\$188,746**
- Missouri Missions Offering: **\$135,412**
- Special Events: **\$95,131**

MBCH Family of Corporations 2022 Financial Report

2022 Expenses



Total Expenses: **\$14,523,017**

Unrealized Loss on Investments: **\$2,658,293**

Revenue Less Expenses: **(\$678,012)**



MISSOURI BAPTIST
CHILDREN'S HOME

Ministry Locations

Therapeutic Group Homes:

(Residential care for males and females ages 6-21 with moderate to severe behavioral and emotional needs.)

Family Resource Development:

(Recruitment, training and preparation for foster and relative families to become licensed and to care for children in their homes. Provides support after licensure.)

Treatment Family Care:

(Intensively trained treatment foster parents for youth with moderate to severe behavioral and emotional needs.)

Family Foster Care:

(Case management services for children and youth in state custody and their families to work toward safe and permanent environments.)

Transitional Living:

(Group homes and apartment living for youth ages 16-21 to prepare for independence.)

Developmentally Disabled Adults Group Homes:

(Group living for developmentally disabled adults.)

Pregnancy Services:

(On-campus and in-home services for minors and adults.)

Counseling Services:

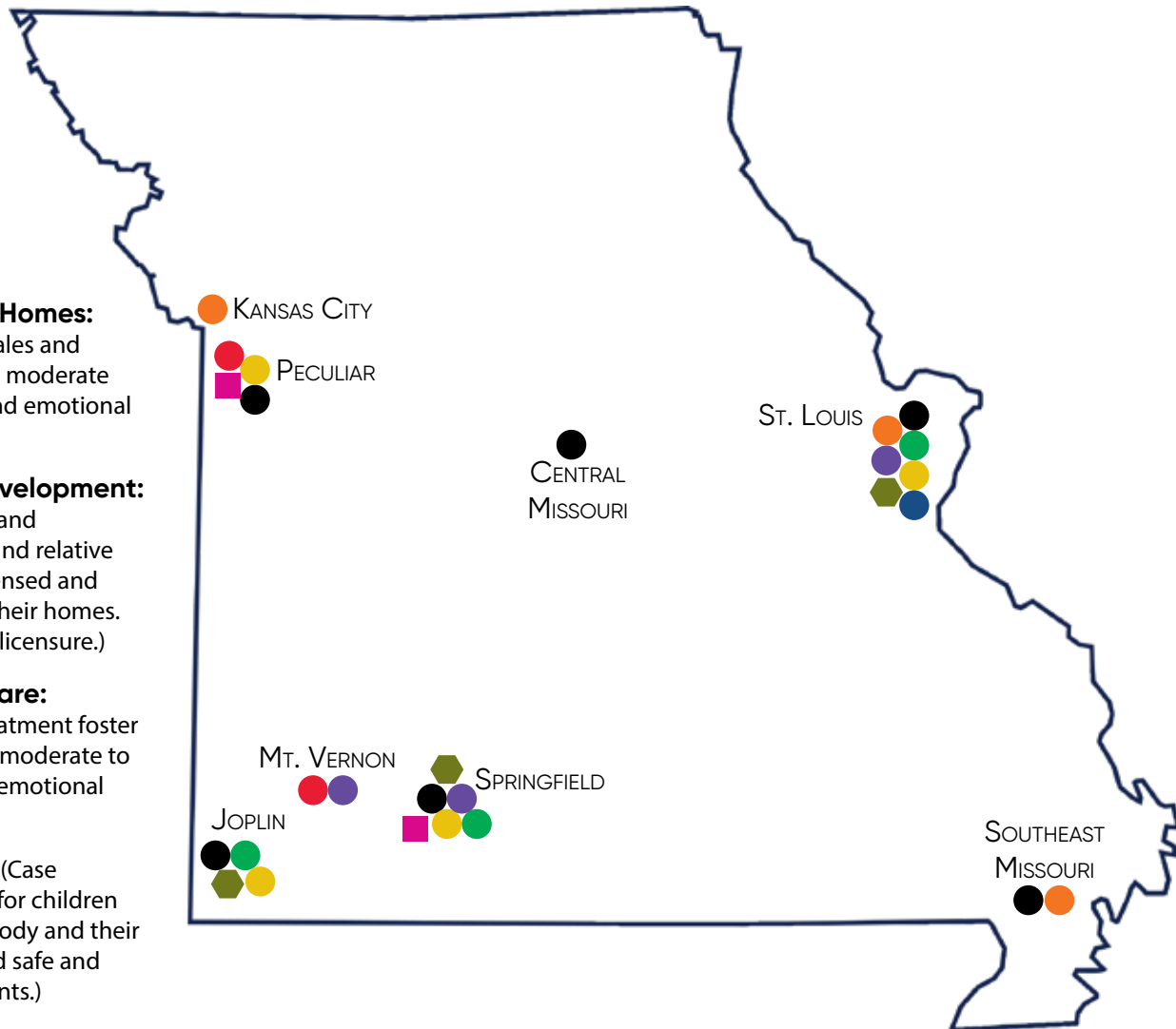
(Counseling for individuals, couples and families – in person at the Bridgeton Counseling Center and on-line via teletherapy.)

Church Engagement:

(Support and resources to promote effective ministry to children, youth and families in local communities. State-wide services through offices in Springfield, Joplin and Bridgeton.)

Anti-Trafficking Services:

(Group homes for minor girls and adult women who are survivors of human trafficking.) - There is an East and West location in the state but location not listed for security.



A Ministry of Hope

Your MBCH Regional Representative is so much more than a fundraiser.

When asked about his work, Southwest Missouri Representative Joe Nogalski defined it this way: "To communicate the work of MBCH and to share its burden with congregations and individuals, encouraging active partnerships through prayer, volunteerism, and financial gifts. To strengthen MBCH's role as an extension of our churches in ministering to 'the least of these,' while helping everyone remain connected and informed." And, finally, "To build lasting partnerships that extend well beyond any financial donation."

MBCH Foundation vice-president, James Morrow, captured the spirit of the MBCH mission in this excerpt from a recent *The Pathway* article ...

In 1 Corinthians 13:13, the apostle Paul writes, "So now faith, hope, and love abide, these three; but the greatest of these is love." Why? Why would Paul write that "the greatest of these is love"? Let's look at what Jesus defines love as. In the Gospel of John 15:13-14, Jesus says to his disciples, "Greater love has no one than this, that someone would lay down his life for his friends. You are my friends if you do what I command you." Love is the most important because love is central to the redemptive act of Jesus giving His life to atone for our sins on the cross. He did not do this because He had to; rather, He did this because He wanted to for such was His great love towards us.

At MBCH Children and Family Ministries (MBCH-CFM) and The LIGHT House (LH) our staff give up their lives every day to share this great love of God with the children, youth and families they minister to. They are doing what Jesus commanded every day. It's really hard work, and the hardest parts of it often go unnoticed. However, this does not make the work less impactful, less important or less Gospel centered.

The children, youth and families ministered to across Missouri through MBCH-CFM and the LH are hurting. They have physical needs for shelter, food, transportation, clothes, etc. They have emotional needs as all of them have experienced some trauma in their life that has made their paths cross with ours. They need counseling and trusted social workers to help them navigate through and deal with this trauma. Most importantly they, like every other human being alive, need Jesus. They need the compassion, mercy, and redemption that is only found in Gospel of Jesus Christ. As Paul writes, in Philippians 2:6-8 regarding Jesus, "...who, though He was in the form of God, did not count equality with God a thing to be grasped, but emptied Himself, by taking the form of a servant, being born in the likeness of men. And being found in human form, He humbled Himself by becoming obedient to the point of death, even death on a cross." Our ministry recipients need to know that He gets them. He understands them right where they are at, and He wants to redeem their life here and now and for all of eternity!

This is the heart of MBCH, this is the spirit of God's Love that your Regional Representatives are taking into the world and into your churches each day.

MBCH Foundation does indeed facilitate the work of connecting like-minded supporters with ways they can bolster the mission financially. This sort of background administrative work is crucial for the health of the ministry. But, they're also keeping you up-to-date as pulpit supply on Sunday mornings or in your Sunday School classes, they're introducing the MBCH and LH mission to new friends at special events and, really, wherever they go. Your MBCH Regional Reps are sharing the good news of how God's people are being used to care for children, youth, survivors of abuse, developmentally disabled adults ... every aspect of the MBCH and LH mission.

They're called Regional Representatives for a reason, they are your direct connection to the MBCH and LH ministry and mission. Your MBCH Foundation team is passionate, they are truly called to the work, and they are much more than fundraisers!

mbch
FOUNDATION

Missouri Baptist Children's Home
11300 St. Charles Rock Rd
Bridgeton, MO 63044
800.264.6224
www.mbch.org - click "donate"

Regional Representatives:

Ben King - West/Northwest Region
816.472.9072; ben.king@mbch.org

David McMullin - East/Northeast Region
573.259.3971; david.mcmullin@mbch.org

Joe Nogalski - Southwest Region
816.317.4430; joe.nogalski@mbch.org

Kenny Vawter - Southeast/Central Region
573.241.1113; kenny.vawter@mbch.org

2023 BRANSON STARS

A HUGE thank you to Clay and Tina Cooper and the Clay Cooper Theater for all they did to make Branson Stars a SUCCESS!

Over \$25,000 was raised to support the ministry and work of MBCH! We loved seeing everyone at the event and are looking forward to 2024! Look for a 2024 date announcement in the following months.

◦ Limited Availability ◦
70% Tax Credits

Maternity Home & Pregnancy Resource tax credits are available in limited quantities for MBCH CFM and The LIGHT House ministries.

Contact your Regional Representative if you are interested.

mbch CALENDAR OF EVENTS

Upcoming Events

Strawberry Festival

June 3, 2023

9 am - 1 pm

First Baptist Church, Arnold, MO

For more information contact:

Special Events

specialevents@mbch.org

417.410.9033

Ozarks Berry Festival

July 22, 2023

8 am - 3 pm

Macedonia BC, Springfield, MO

For more information contact:

www.macedoniabc.com

ozarksberryfestival@gmail.com

417.882.6647

Missouri Quilt Festival

September 16, 2023

9 am - 4 pm

Platte County Fairgrounds, Platte City, MO

For more information contact:

Facebook: Missouri Quilt Festival

cherri.l.verschraegen@gmail.com

816.872.8526

Women's Ministry

August 1-4: Pregnancy Services Retreat

Branson, MO

Parenting classes, girls Bible studies, and Esther at

Sight & Sound theater

August 25-26: YOU Lead

Kansas City, MO

Lifeway event for Women featuring Priscilla Shirer

September 18-19: BEESAM Annual Meeting

Springfield, MO

An MBC annual event for church secretaries.

October 13-14: Gasconade Valley Baptist

Association Women's Event

March 8-9, 2024: Women's Ministry Training Clinic

Branson, MO

Women's Ministry

The MBCH Women's Ministry serves churches, women's leaders, teams, and women's & girl's groups with resources, conferences, training, and events throughout the state of Missouri and beyond. The Women's Ministry team also works closely with abuse victims and children needing assistance.

Our purpose and goal is to reach women and girls with the gospel and to disciple and train them to do ministry to those in a culture that is very toxic.

This year we are focusing on how to minister to those in alternative lifestyles, those grieving loss of any type, and ministry to abuse victims. In addition to facilitating MBCH's Stewards of Children training, the Women's Ministry is equipped to lead the Lifeway Training Resource "The Church That Cares Well for the Abused". In fact, we are blessed to have access to the library of LifeWay Bible studies which is available on-loan to churches. We work to educate churches on how to utilize these resources and save their ministry dollars.

Our work deals with every aspect of womanhood. Women and girls are looking for Christians who are transparent and who will share their own struggles with them so they might avoid so many of the pitfalls that beset women and girls these days. Women are hurting in so many ways, particularly with children going into alternative lifestyles, and our churches need support to step up and help them deal with these issues. Additionally, we are seeing countless numbers of women coming forward with their own stories at the mere mention of abuse. We seek counseling and help for them, and we have the honor to pray over and for them. Numerous supportive groups meet to help women work through the horrors done to them and to heal. One of our regional leaders works with attorneys and judges throughout the State on these cases and regularly appears in court on behalf of the victims. This is a ministry unlike any other within the church or community.

The driving force for many staff is seeing lives changed by the gospel. Working with the girls during Pregnancy Services Retreats is so exciting. We get to lead them to the Lord and help them to see that they can be a good mother to their child and can find God's purpose and plan for their life as they seek His will in a mate and how to live their life for Him. They often discover that they can be the one to break the cycle of generations of abuse, poor parenting skills. They learn they do not need to go through life having had multiple partners/marriages, many problems can be avoided when they make Jesus Lord of their life. It is amazing to be a part of watching the Lord work in huge ways, changing lives for Him and His glory!

For Women's Ministry resources, Lifeway study resources or information about holding a training clinic at your church contact Wanda Shellenbarger at wanda.shellenbarger@mbch.org or 417.529.0724.

VBS Duffel Bag Drive

Duffel Bags are always needed by foster children and residents at MBCH. These children often have nothing but a black trash bag to carry their belongings to their new foster home. We are inviting supporters to encourage their church VBS or children's mission programs to do a Duffel Bag Drive as part of their missions projects this summer. It may seem like a small thing but the message of LOVE is huge. We would never want to carry our belongings to someone's home in a trashbag and the same is for a child. If you or your church would like to donate duffel bags please contact your Regional Representative (see page 9).

Honorariums & Memorials

Honorariums

Robert & Mary Barton by Mr. and Mrs. Charles Brown, Louisiana.
Jesse Eli by White Cap Springfield, Springfield; Mr. John Perkins, Strafford.
James & Lillian Fiddler by Mr. James Fiddler, Lancaster, PA.
David & Nancy Gottman by Mr. and Mrs. Larry and Susie Sees, La Plata.
Pastor John Hanson by Calvary Baptist Church – Bourbon.
G.D. Milberg by Mr. and Mrs. Harry Milberg, St. Louis.
Gardell & Karen Powell by FBC-Fayette.
Jim & Renee Roller and Family by Rev. Kenneth Roller, Lockwood.
Hutton & Cienna Saulsbury by Mrs. Phyllis Saulsbury, Kansas City.
Mary Singleton by Mr. Thomas Day, Florissant.
Barbara 'Bobbi' Smith by Salt and Light SS Class – East Sedalia BC, Sedalia.
Christine Stevens by Mr. and Mrs. Michael McCaig, Hayti.
Susan Thomas by Laura Holly Gentry, Poplar Bluff.
Mark West Family by Ms. Julia Black, Bowling Green.

Memorials

Josephine Elizabeth Baker by Mr. and Mrs. John S. Hicks, Sr., Nashville, TN.
Vince Bardwell by Mr. and Mrs. William M. Ronan, St. Charles.
Mark Barrett by Ms. Diana Wagner, Memphis.
Robert and Mary Barton by Mr. and Mrs. Charles Brown, Louisiana.
Norma Beckemeier by Mr. and Mrs. Richard G. Davis, St. Charles.
Gordan Benson by Mr. and Mrs. William M. Ronan, St. Charles.
Betty & Thud Biggs by Ms. Cynda Bearden, Jonesboro, AR.
Bill Bryan by Mr. and Mrs. William M. Ronan, St. Charles.
Michael Chalmers by Mrs. Anita Eddy, Springfield.
Marvin Cunningham by Mr. and Mrs. Timothy P. Flint, Lee's Summit.
Brian Dehn by Mr. and Mrs. Clarence D. McKinney, Jefferson City; Mr. and Mrs. George Dehn, Marshall.
Rev. Tom Downey by Pleasant Green Baptist – Madison.
Ronald Dugal by Rev. and Mrs. Kevin L. Miller, Farmington.
Roger Dunham by Mr. and Mrs. Timothy P. Flint, Lee's Summit.
Roger Eddy by Mrs. Anita Eddy, Springfield.
Jesse Eli by Jack D. Eli, Springfield; Mr. and Mrs. Dan Sturgis, Marshfield; Mr. and Mrs. Michael L. Rand, Ozark; Ms. Elaine E. Underwood, Springfield; Ms. Nyanna Blake, South West City.
Edith and Howard Elrod by Ms. Madelyn J. Schnick, Strafford.
Clyde Enyeart by Mrs. Anita Enyeart, Marceline; Mr. and Mrs. Gary Hawkins, Chillicothe; Mr. and Mrs. Gary Sportsman, Marceline; Mr. and Mrs. Martin Boss, Salisbury; Mr. and Mrs. Freddie Henke, Salisbury; Mr. Ray Dowell, Keytesville; Mr. and Mrs. Denny Henke, Salisbury; Ms. Joann Mott, Marceline; Mr. and Mrs. Chester May, Callao; Mr. and Mrs. Danny Enyeart, Dalton; Mr. and Mrs. Robert S. Carothers, Salisbury; Mr. and Mrs. Eugene Graham, Atlanta; Mr. James R. Novinger, Kirksville; Joe E Jones Farms Inc., Keytesville; Calvary Chapel Baptist – New Boston.
Cecil Fisher by Mr. Dian Lawson and Ms. Cherie Mutersbaugh, Paris.
James Cecil Fisher by Marion County Ambulance Dist., Hannibal; Mr. Alvin Vaughn, LaGrange; Mr. and Mrs. Eric Botkin, Salisbury; Mr. and Mrs. J.D. Barry, Clarence; Mr. and Mrs. Kevin L. Dye, Paris; Mr. and Mrs. Randall Klocke, Ewig; Mr. and Mrs. Roger Baker, Clarence; Mr. James D. Fisher, Shelbina; Mrs. Lena Fisher, Shelbina; Mrs. Nancy A. Wood, Ft. Dodge, IA; Ms. Sara Smith, Independence.
Ralph Fletcher by Mrs. Sheila Fletcher, Rolla.
George Frazier by Gallatin Truck & Tractor, Inc., Gallatin; Moulin Five Farms, Gilman City; Mr. and Mrs. Steve York, Bethany; Mr. and Mrs. Tom Hansel, Bethany; Mr. Mike A Rogers, Bethany; Mrs. Mary Ann Frazier, Bethany.
Carl Gladden by Hickory Hills Baptist, Waynesville; Mr. and Mrs. Carl Gladden, Waynesville; Ms. Judith L Ogle, Waynesville; Ms. Judy Laughlin, Waynesville; Woodlane Rentals, St. Robert.
Ted Gleason by Mr. and Mrs. John Gleason, Greenfield.
Frank R. Hadder by Mrs. Laverne Hadder, New Madrid.
Orville and Nona V. Halcomb by Mrs. Nancy J. Halcomb, Billings.
Bonnie Hall by Mr. Gary Raines, Ashland; Ms. Mary Shelton, St. Joseph.
Travis D. Hanna by Mrs. Carolyn Hanna, St. Louis.
Joshua and Lexi Harrison by Dr. and Mrs. Rodney Harrison, Lawson.
Bernard Hayes by First Baptist – Sikeston.
Bob Hayne by Mr. and Mrs. William M. Ronan, St. Charles.
Moneaka Heilmeyer by Pleasant Green Baptist, Madison.
Dean and Joyce Hendricks by Ms. Holly Dugan, San Antonio, TX.
Clarence Hill by Mrs. Anita Eddy, Springfield.
Kevin Hocket by Summit Wood Baptist – Lee's Summit.
Raymond and Nettie Hudes by Mrs. Carole Paxton, Savannah.
Robert Hudson by Mr. and Mrs. Alvin Goodger, Cairo; Mr. and Mrs. Dick Carroll, St. Charles; Mr. and Mrs. Von Semke, St. Charles; Mr. and Mrs. Walter Angel, Bowling Green.
Dwayne Jett by Mr. and Mrs. Phillip Jett, Alton.
Ronnie and Clyde Jones Jr. by Mr. Charles Jones, Caruthersville.
Leonard Kuiper by Second Baptist Church – Poplar Bluff.
Iva Lanier by Ms. Betty Takahashi, O'Fallon.
Seth Lavon Lockard by Ms. Janet Beasley, St. Louis.
Brian Martin by Mr. and Mrs. Russell L. Martin, St. Charles.
Billy Massey by Mr. and Mrs. David A. Powell, Joplin.
Nancy Maxwell by Mr. and Mrs. Michael Stammer, Arnold.
Judy McConnell by First Baptist – Sikeston.
Sara Medley by First Baptist – Farmington.
Lucy Miller by Rev. and Mrs. Kevin L. Miller, Farmington.
Jim and Renee Morris by First Baptist – Sikeston.
Joyce Morris by Mr. and Mrs. George R. Barber, St. Louis.
Rev. G. Dale Norfolk by Mr. and Mrs. Steven Colwell, Rogers, AR.
George Parker by First Baptist – Sikeston.
Naomi Paul by Buchanan Funeral Home, Monett.
Rex Phillips by Mr. and Mrs. Robert D. Kelso, Big Spring, TX.
Margaret Pruitt by Mr. and Mrs. Douglas Johnson, Beloit, KS.
Colton, Kendrick, and Baby Pyrtle by Mr. and Mrs. Dale Kipp, Van Buren.

Lorene Reavis by Mr. and Mrs. Stan Halter, Clever.
Mildred Rippee by Macedonia Baptist – Springfield; Mr. and Mrs. Carl Dyson, Springfield.
Dale Robertson by Mr. and Mrs. Norman Hawkins, Lebanon.
Judge Kenneth and Mitchell Romines by Mrs. Katherine Best, Thayer.
Pat Rutledge by Faith Baptist – Summersville.
Harold Sampson by Mr. and Mrs. Robert S. Brewer, Franklin, TN.
Ernie & Kaye Schloman by Mr. and Mrs. Wayne Stoll, Corder.
Marcus and Virginia Seyer by Ms. Julie Seyer, Chaffee.
Bobby E. Smith by Mr. and Mrs. Robert G. Bohner, Purdy.
Bob Smith by Pleasant Ridge Baptist Church – Verona, Aurora.
Jean Carpenter Smith by Mr. and Mrs. David Russback, Alton.
Jon Snowden by Mrs. C. Beth Snowden, Lee's Summit.
Kenneth and Carolyn Standridge by Second Baptist – Poplar Bluff.
Christine Stevens by Consolidated Public Water Supply, Hayti; Ms. Lenda Pearson, New Madrid.
Kathy Stockdall by Mr. Frank and Dr. Sandra Woodside, Independence.
Wayne and Donna Kay Taylor by Mr. Ryan Taylor, Falmouth, ME.
Ivan Tucker by First Baptist – Farmington.
Stephen Blake Watkins by Mr. and Mrs. Tom R. Watkins, Lebanon.
Stephen M. Weller by Ms. Louise Weller, Valley Park.
Pam Wenny by Ms. Eva Hammons and Ms. Melba Brooks, Springfield.
Edward F. White by Mr. and Mrs. James E. White, St. Charles.
E. Lynn Wilson by Mr. and Mrs. Robert L. Webb, Smithville.
David and Rodney by Mr. and Mrs. Lewis Powers, St. Louis.

Volunteer on an Event Committee

Branson Stars Committee

Strawberry Festival Committee

The LIGHT House Community Engagement Committee

Bleak Midwinter Endurance Run Committee

For more information contact:
Special Events
specialevents@mbch.org
417.410.9033

May 2023

A Cooperative Program supported
entity of the Missouri Baptist Convention

- 2022 Annual Report
- New MBCH Logo
- Martin Announces Retirement Plans

In this issue:



Missouri Baptist Children's Home

THE MESSENGER



Missouri Baptist Children's Home

11300 St. Charles Rock Road

Bridgeton, MO 63044-2793