



Making a Difference, One Heart at a Time

Missouri Baptist Children's Home (MBCH) helps turn the idea of hope into concrete life changes. When Jesus takes charge of broken lives, despair crumbles into dust as children find homes, youth find direction, parents find resources, and families find a future.

In 2022, MBCH served **2,853** children, youth, and families. A new partnership with CarePortal connected MBCH with Missouri churches for greater community impact. Preparations for the Martin Youth Center, opening in the later part 2023, were put in place so homeless teens will have access to meals, showers, and laundry facilities while working with a case manager.

Other highlights include bringing **190** children into forever homes, providing safe haven to **22** survivors of human trafficking, connecting **276** mothers and babies with resources and support, and leading **five** children and youth to accept Christ. MBCH also served families through therapeutic group homes, residential care for adults with developmental disabilities, foster care support, transitional living for youth aging out of foster care, and counseling.

FAMILY OF SERVICES

- Family Foster Care
- Treatment Family Care
- Family Resource Development
- Counseling Center
- Youth Drop-In Center
- CarePortal
- Therapeutic Group Homes
- Pregnancy Services
- Transitional Living Program
- Anti-Trafficking Services
- Services for Developmentally Disabled



800.264.6224 • www.mbch.org



Missouri Baptist Children's Home is committed to serving God by responding to the needs of children, youth and families to make a lasting difference in their lives.

Connecting children,
youth, and families to hope,
healing, and restoration.

President's Update



Missouri has far too many children in foster care and the church should take an active role in working to address this. God's people have a responsibility to respond to the needs of children, youth, and families, and MBCH is honored and blessed to partner with them in providing these ministries.

Russell Martin, President

Our church engagement initiative works to build relationships with local churches by providing opportunities to better enable them to respond to the needs of children and families in their communities. This is done in a variety of ways to include such things as:

- CarePortal
- Stewards of Children and other trainings
- Supervised visitation ministry
- Parent support volunteers ministry
- Open Table serving opportunities
- Foster care ministry development
- Women's ministries programs

Programs such as these can have a positive impact on reducing the number of children who enter out-of-home care and can go a long way in expediting children exiting foster care and returning home or attaining some other form of permanency.

For information on any one or more of these opportunities, I would encourage you to contact David Burch, Church Engagement Strategist, at David.Burch@MBCH.org.

Churches also play a vital role in equipping MBCH to provide services to those who enter foster care and have need of the programs offered through our residential centers and regional offices. Churches can send us people to serve on staff as missionaries as well as provide and support foster homes. Churches can support us financially through such activities as promoting and supporting the Cooperative Program, the Missouri Missions offering, and the birthday offering. They can promote and support special events, such as a festival, Branson Stars, a golf tournament, and other activities.

But most of all, churches can pray for how God wants to use them to minister to children, youth, and families and then respond to that call. And MBCH stands ready and willing to partner with them to help make this happen.

We invite you to join us as we together impact the lives of children, youth, and families for the cause of Christ.

A handwritten signature in black ink, appearing to read "Russell Martin". The signature is written in a cursive style and is positioned at the bottom of the page.

MBCH News

Stewards of Children

As of June 30th, 250 individuals have completed this two-hour training either virtually, or in-person.

Churches should be leaders in ensuring children are kept safe. Our Stewards of Children program will prepare you and your church to identify signs of sexual abuse, respond compassionately and respectfully when abuse is suspected, and identify next steps for improving childcare and oversight.

Russell Martin Youth Drop-In Center, Bridgeton, MO

MBCH is moving forward with renovations for the new drop-in center. These are projected to cost \$216,936 and will be entirely paid for by generous grants from the Children's Trust Fund, the Watley Foundation, and undesignated funds given by the Missouri Baptist Foundation.

Thank you to the Children's Trust Fund, The Watley Family Charitable Foundation, and the Missouri Baptist Foundation. Your generosity has enabled MBCH to take proactive steps in service to at-risk youth AND while remaining debt-free.

Ministry Culture Insight

New Employee Commissioning Services

"Most of you know that we conduct commissioning services for our new employees. They are a joy to attend and to hear the reasons why people join our staff, with the vast majority stating that they felt the call of God to serve Him in this place. We certainly want every team member to have that call. To also hear many express how welcomed they are made to feel and that this is a special place is rewarding. It is one of our priorities to make this a workplace where God is supreme and where the purpose of everything we do is to honor and glorify Him." - Russell Martin

Campers on Mission

Despite the fact Campers on Mission was not officially able to help with a roofing issue in Springfield, Denny Ball (co-Vice President) was able to recruit area volunteers to perform the needed work. This wonderful gift of volunteerism saved MBCH \$60,000 to \$70,000.

We are grateful for Denny & Campers on Mission and to the volunteers who made these repairs and cost-savings possible!

Community Engagement



On July 6th, The Hutchens Campus welcomed members of the community for their fourth Community Prayer Meeting. The previous meetings were during the day when our clients were in school; this was the first evening meeting. Staff were joined by a group of local community members as well as some clients! The meeting focus was Freedom in Christ. Those in attendance participated in a time of worship and heard a wonderful devotion lead by the campus chaplain. After the devotion, smaller groups formed to pray over the staff, clients, campus, and community. Staff were delighted to see over half the group were new faces! After the meeting a Q&A session was held which included one of the clients. He helped staff answer questions while giving his perspective on how MBCH has helped support his transition into adulthood.

Thank you to the Berry Festival

The spirit of unity and generosity shone brightly at the annual Berry Festival on July 22, a collaborative effort between MBC churches across southern Missouri to raise funds for the Missouri Baptist Children's Home. Hosted by Macedonia Baptist Church in Springfield, the event showcased a vibrant tapestry of compassion, craftsmanship, and community bonding, all to help families and children in the name of Jesus.

The Missouri Baptist Children's Home has long been dedicated to serving God by addressing the needs of children, youth, and families, making a lasting positive impact on their lives. This year's Berry Festival was dedicated to event founder, Edna Deaton, who went to be with the Lord this year. The planning and contributions to make the event happen this year are a testament to the enduring commitment of the participating churches and their congregants to this noble cause.

The festival's centerpiece was a remarkable auction featuring more than 100 meticulously crafted quilts and a diverse array of handmade craft items. The attention to detail and the love poured into these creations resonated with attendees, who found themselves not just bidding on tangible items, but also on the sense of community and purpose that these offerings represented.

No Berry Festival would be complete without indulgent treats, and this year did not disappoint. Attendees reveled in the variety of berry cobblers and various ice creams, savoring each bite as a reminder of the simple joys of summer. The culinary experience was elevated by the thoughtful lunch items provided by Center Church in Ash Grove.

Berry Festival director Bruce Smith expressed his gratitude and enthusiasm: "We have really enjoyed putting on the event, and it benefits a great cause. We love that it helps children at the Missouri Baptist Children's Home." Smith's sentiment encapsulated the collective sentiment of the organizers and attendees, who found immense satisfaction in knowing that their efforts were directly contributing to the well-being of those in need.

Pastor Craig Liscom of Macedonia Baptist Church reflected on the festival's significance: *"This event is a highlight as we see churches across the region working together to bring the gospel to families and kids struggling here in Missouri. We love the fellowship that happens at this event, but even better is the tangible impact it makes in our community."*

The Berry Festival raised **\$26,251** and serves as a shining example of how collaboration and compassion can create lasting change. Beyond the quilts, crafts, and delectable treats, the true success of the event lies in the transformation it brings to the lives of the children, youth, and families served by the Missouri Baptist Children's Home. As the sun set on this year's festival, its impact will continue to ripple through the hearts of those who are served in the name of Jesus in 2023. A huge thanks to all of the volunteers, quilters, and craftsman who made this year's event a success.

Dr. Craig Liscom, Pastor, Macedonia Baptist Church

The Extra Mile

Greg likely wouldn't remember their names twenty years from now. Only impressions would stick with him, like in a dream: a young woman in a neon pink hoodie, a thick voice that hitched on a sadness it tried not to show.

Close calls and hospitals happen like blurs, razor-sharp with the diamond print on the curtains mixed with procedures he couldn't recall. A thousand years, a couple of minutes, a childhood, an X-ray result so black and white it left no room for nuance. In the future, when Greg told the story to a girl with a slow, sweet smile, she would gasp at the medical definitions, horrified at all that poor little Greg must have suffered. For him, however, the edges of the memories were soft. If it had happened differently, perhaps, they might have turned into trauma, throbbing like a ghost limb he'd lost yet couldn't get rid of. But every day of what might have made its way into a nightmare, Greg was never alone.

When Greg came into our care at MBCH, he needed medical attention. We drove him to a faraway hospital to start with some tests and then see where they led. The MBCH staff all felt a strong surge of compassion, as anyone would. They'd witnessed enough injustice by now to know there was nothing you could do about these sorts of things—and then they did it anyway.

What was one more hard knock, after all, for a kid whose whole life had been a series of falls—what difference would a few days in a hospital make in the grand scheme of all the horrors likely stored in his head? But Jesus never said to choose mercy only when our calculations projected success, as if the Holy Spirit were a wind you could predict. He talked instead about a cup of cold water and a visitor sitting with Him when He was sick. He left it simple, the option to love, a second mile to walk even when the breeze bit because you'd given away both your coat and cloak to a stranger.

And so the staff members at MBCH drew up a schedule of shifts. Hour by hour, test by test, someone was always sitting beside Greg. Instead of one extra mile, some of them drove five hours past home and their work assignment just to watch over him while he slept, in case he woke up in the dark. Some of them knew how to distract him with jokes, while others were motherly, comforting, and kind. They flipped channels with him and asked attentive questions about his favorite Marvel characters. One held his hand while the needle slipped in; one helped him process the diagnosis with calm explanations and a hope too matter-of-fact not to believe.

After a few days, Greg was able to check out, but he never made his way to a group home. While he was under medical care, the Family Foster Care team had been scrambling behind the scenes to match him with a foster family equipped for the bigger commitment of supporting him through ongoing treatment. Greg passed straight from one loving hug to another, always cared for, always played with in the waiting room.

Twenty years from now, every staff member at MBCH who had been around back then could still tell you that his name was Greg.

"I wonder how he's doing now," they'd say. The answer, of course, would be a different shade of complexity than anyone might have guessed: some plot twists, some grief that never resolved, some moments of joy and glory and awe. Greg would forever be working things out, as all of us are.

For a minute, the staff members would turn back to their minds to look at the past, and then they'd suddenly shiver. There was something in the eyes of the boy in the bed—almost like they'd caught a glimpse there of an old, old friend, someone who named them, who held them, who claimed them as His.

... Jesus never said to choose mercy only when our calculations projected success ...



The Importance of Relative Care, Foster Care

Take just a moment and think back to when you were a child. Think about how you depended on your parents and family to take care of your needs. Think about your friends and all the familiar places and things you did. Now, use your imagination further – what if you had to be placed in foster care due to abuse or neglect? Imagine how traumatizing that would be. Would you want the case manager assigned to you to place you with someone you know (a relative or friend) or with someone you did not know? Probably the majority of us would say we would want to be placed with a relative (such as a grandparent or aunt/uncle) or an adult friend (such as a teacher, church youth leader, etc.).

Next – think of a precious child in your extended family. It might be a granddaughter/son or a nephew/niece. What if the unthinkable happened, and that precious child was placed in foster care? Where would you want the case manager of that child to look first when locating a placement for him/her? My guess is that you would say, “I would want that case manager to contact me, and I would take my grandchild or niece/nephew in a heartbeat!”

There is substantial research that has shown kinship care benefits children in maintaining permanency and well-being (one research example is a systematic review of more than 100 studies on this subject conducted by Marc Winokur, Amy Holtan, and Keri Batchelder in 2014). It makes sense, doesn't it, that children fare better living in a home where they already know the people taking care of them.

Does that mean foster parents are no longer needed or are in some way subpar? Absolutely not! Not all children have relatives that are able or willing to care for them; or it may be that it takes some time to locate relatives willing to care for the child. Foster parents bridge that gap many times of being family to that child until a relative can be found or until the child is able to be returned to the biological parent(s). Sometimes it is just not possible for the child to be reunified with parents and their rights must be terminated; when that occurs the child is available for adoption. There are many foster parents who have stepped in to become the forever family for that child through adoption.

People who are willing to become licensed foster parents are desperately needed to care for foster children, to provide support and encouragement to foster children's families, and to share the good news of Christ; this is an amazing ministry opportunity! *Did you know that the majority of children/youth that enter care have to do with reasons other than abuse?* Neglect comprises 63% of the children who enter care; often parents who neglect their children are dealing with issues that could be resolved if they received helpful resources, encouragement, support and, again, as stated above, were introduced to the life-changing power of God.

If foster parenting is not the right path for you, there are other ways you can be involved in ministry through MBCH Children and Family Ministry's Church Engagement initiative. We are seeking to develop partnerships with churches to meet the needs of children and families that MBCH Children and Family Ministries serves as well as the needs of children and families within church congregations and in surrounding communities.

If you are interested in becoming a foster parent, please contact us at (800)264-6224 and ask for “Intake”. If you are interested in learning more about our Church Engagement initiative, please contact David Burch at (417) 380-1082.

Together we can make a lasting difference in the lives of children, youth, and families!

This article first appeared in the June 13, 2023 issue of *The Pathway* newspaper.

Ramona Conrad-Cooper, Vice President, MBCH Children and Family Ministries

Staff Spotlight



Vanessa Hammons

Family Foster Care Specialist Springfield Regional Office

Vanessa was nominated by her peers to receive our Employee of the Quarter award (west side). Vanessa is an all-around employee and human being. She often sends scriptures and encouraging words to other case managers that are struggling with a case.

Recently, the biological dad of one of her clients in her caseload suddenly passed away. Vanessa went above and beyond to meet the needs of the children and the mother. She connected with the therapist to see how to explain to a kindergartner, a first grader, and a low-functioning teenager that their dad had passed away. Then she met with the mom and talked with her about how to tell the children. After that she and mom met with the two younger children to tell them their dad had died. She then drove an hour away to meet with the teenager to do the same. She listened to the mother's wishes on visitation and funeral arrangements and made sure all three children were able to attend.

At court following the funeral, the entire team individually told the judge how much Vanessa had done for the family. She was praised by the DJO (deputy juvenile officer), GAL (guardian ad-litem), mom's attorney, and another case worker.

Vanessa is professional and compassionate. She has a heart for her families and goes above and beyond in times of need.

Vanessa is representative of a number of staff who deal with traumatic and difficult situations day in and day out, not knowing for sure what each day is going to bring. We appreciate your prayers for our staff as they go about their daily responsibilities.

The Harvest is Plentiful

Over the last several years, the needs of Kansas City families have been skyrocketing to unprecedented heights. As a January 2023 United Way article reports, 200,000 people and 18,000 children under the age of five throughout the Kansas City region are now living in poverty. In response, The LIGHT House stands ready to provide comprehensive, Christ-centered care for those facing unplanned pregnancies or struggling to raise young children. We have been equipping mothers with education, counseling, practical life skills, and prenatal and pregnancy classes since 1985, and today, we are continuing to expand our reach to meet even more women and children where they are.

The LIGHT House provides a wide range of services and programs, whether women in crisis need a temporary home, one-on-one mentoring, or the support of a small group. Our full residential services are free of charge for women ages 12-21 who need a safe place to stay while pregnant or parenting a young child. In addition to meeting clients' basic needs, we provide case management, counseling, life and parenting skills classes, and the opportunity to develop or deepen their relationship with Christ. The spacious residential home is clean and beautifully furnished, with private rooms for each family unit, and our 24/7/365 staff provides a loving and friendly environment so that young women feel comfortable and cared for.

Sometimes, families simply need a boost via encouragement, education, and home support. Over the last year, we have developed a Home-Based Pregnancy Services program that gives clients a space to ask questions and receive encouragement and feedback as they progress through each stage of pregnancy and raise infants up to one year of age. In addition to education and training, we also provide families with essential baby supplies including safe sleeping equipment, car seats, diapers, wipes, and more. In one year's time, the Home-Based Pregnancy Services program has experienced so much success that we have already added two new part-time positions to keep up with referrals.

For over a decade, our Tuesday evening outreach group has offered aid to young mothers who do not need residential services but could benefit from practical, physical, and spiritual support. The Outreach Program has our largest reach and serves any young mother who is open to choosing life for her baby, whether she is still pregnant or is already raising small children. Through the Outreach Program, mothers learn parenting, nutrition, life, and leadership skills to help them achieve self-sufficiency, all within a safe community environment where she can connect with likeminded moms.

As our mission statement proclaims, The LIGHT House is committed to serving God by responding to the needs of children, youth, and families in order to ensure that all Life Is Given Hope for Tomorrow. No matter what challenges our ministry and our city face, we remain committed to regularly improving our effectiveness as we invest our time, resources, expertise, and compassion into the least of these within Kansas City.

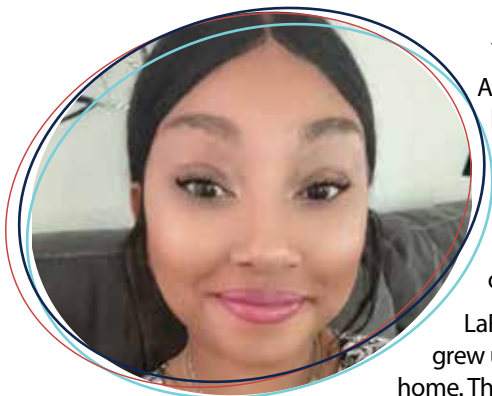
Julie Ball, Vice President, The LIGHT House

"Let us not be weary in doing good, for we will reap in due season if we don't give up."

Galatians 6:9



THE LIGHT House Staff Spotlight



As a case manager at The LIGHT House, LaRonica loves combining the joy of serving women with the relational expertise necessary to foster real life change. With a Bachelors in Psychology and a Masters in Business Servant Leadership, LaRonica understands both people and organizational management.

LaRonica may have been born in Kansas, but she grew up in Missouri and is proud to call Missouri home. The mother of four beautiful kids, she's passionate

about investing in babies, children, and moms. LaRonica has extensive experience in case management, as she has previously worked in hospital diversion, CPRC, and Outreach. She also helps provide housing for the homeless through the Department of Mental Health.

People matter, and motherhood matters. Whatever each client needs, LaRonica is there to help as she extends God's care to one family at a time.

Back-to-School

Needs List

- Book bags
- College ruled paper
- Spiral Wide ruled and College ruled paper
- Pens
- Pencils
- Calculators
- Scientific calculators
- Scissors
- Glue
- Markers
- Color pencils
- Erasers
- Note pads
- Teen socks/underwear

The Power of Prayer

John had come a long way since the Richardsons had first stepped in as his foster parents, but all his progress led to a dead end. The Richardsons had nothing left—no options, no ideas, just a futureless child and hours of prayer.

When they first met him, John was a solemn preschooler who didn't chatter about Paw Patrol or make sputtering truck sound effects like he should. There was more to his lack of communication than the early years of abuse and neglect, or the series of foster care placements he'd shuffled through before coming to MBCH. As if John's story weren't complicated enough, he was also autistic and nonverbal. Without language to process so many turbulent changes, the trauma multiplied into cycles of chaos and screaming. The Richardsons could hold him all they liked, but they could never reach him no matter how hard they tried.

But they chose to believe that John was capable of more. The Richardsons committed to the grueling work of learning American Sign Language (ASL). One word at a time, they helped John fill in his world with meaning. As John learned language, the overwhelming overlap of everything separated into distinct points he could name, one by one: applesauce, yellow, need, afraid.

ASL gave John's life order and structure. For the first time, he could tell someone else how he felt and understand what they said in response. He was happy with his foster parents, the only people who had ever known him. The more words he learned, the more his challenging behaviors calmed into healthier functioning and coping mechanisms that the Richardsons helped him develop. Things were looking up, and the words kept coming—helicopter, sorry, lizard, laugh.

Things were looking so good, in fact, that John seemed ready to transition into an adoptive home. The Richardsons and John's MBCH case worker began to pray that God would lead them to the right family. But John's needs were still too vast, too specific. For one reason or another, no couple was an appropriate fit.

The Richardsons couldn't find an adoptive family, but they kept finding more people who committed to praying for John every day. It had to be possible. When Elijah prayed, the heavens answered with rain; when Joshua prayed, the sun itself stopped to listen. Surely the defender of the fatherless would notice the cries of so many of His children and respond.

But no one ever came. Now words like abandoned and impossible circled through the Richardsons' heads like a refrain. Even as their faith flickered, they continued to pray.

Just when they'd all but given up, they found them—not the perfect family, of course, but the right one. God had equipped the adoptive parents with everything John needed: sufficient time and resources, a supportive community, patience, empathy, and an uncanny ability to understand John's disposition and help him grow. John's new adoptive parents even knew sign language! They were the kind of miracle that could only have come from God. In fact, John wouldn't even have to move houses, because he already lived with them: his new adoptive parents were the Richardsons.

Foster care had always been their calling, and there were a thousand reasons why the logistics of adoption simply wouldn't work. But one morning when they were gathered with John's case worker and their support team to pray, every person in the room had the same thought as they opened their eyes after the last amen. The Holy Spirit had given unity of heart to the entire group, confirming what the Richardsons had started to wonder. They'd loved John like their own son for a long time now; they were the answer that God was providing.

These days, the Richardsons work relentlessly to support John's counseling and education. MBCH and the prayer team continue to stick close, helping the family with day-to-day miracles. And John is still building his vocabulary. He understands the word faithfulness better than a lot of preachers do, because God's promises have become his home.



Prayer Needs

The power of prayer and the continual need for prayer is felt everyday at MBCH. Our staff spend large amounts of time in prayer as they face the continual and growing challenges of caring for children, youth, and families throughout the state. We urge you to join us in prayer for hope, healing and restoration and take the step of committing to pray for our staff and the clients we serve. Many times the needs cannot be spoken but there are times when we can ask for specific prayer. Please visit our website to see the most updated list of prayer needs.

If you would like to commit to being a prayer partner please complete the response envelope provided or talk with your Regional Representative (see page 13 for more information).



www.mbch.org

Christmas

Wish List

General Items

Toys and personal items
Art\Crafts: Teen to adult
Axe cologne sets
Basketball /footballs /soccer balls
Black hair care products
Canvas and paints
Christmas gift bags: all sizes
Christmas Stockings (for stuffing)
Bath and Body Sets
Educational toys: birth to 2 yrs.
Model planes and cars with batteries
Nontoxic paints and glue
Mp3 players with earbuds
Paw Patrol items
Spiderman toys
Dinosaur items
Transformers and action figures
Bluetooth speakers
Make up
Nail accessories
Cross body purses
Male watches

Clothing & Baby Items

Baby onesies: Newborn-6 months
Baby socks
Baby sleepers
Outfit for toddlers
Baby bath towels & wash cloths
Receiving blankets
Pajamas: boys/girls/men/women (all sizes)

Household Items

Dishes, silverware, glassware
Twin sheet sets
Comforter's sets- twin and full size
Kitchen towels, dish cloths
Bath towels/hand towels/wash cloths
Shower curtains, rubber bath mats, rug type bath mats
Small trash cans
Bed pillows
Air fryers
Coffee pots
Can openers

Gift Cards (\$10 increments)

Pre-paid VISA card
Shoe Carnival
Footlocker
Dollar Tree
Target
Quik-Trip
McDonalds
Forever 21
Macy's
Rue 21
Beauty Supply
Carter's
Children's Place
Amazon
Dairy Queen
Ulta Beauty

Hygiene items

Deodorant (male and female)
Lotion
Body wash
Petroleum jelly
Baby wipes
Kleenex

Items for Community-based programs:

Walmart gift cards: \$10 & \$25 increments (most preferred)
Scented lotion/body wash sets
Journals/planners for new year for moms
Nail and makeup items (all ethnicities)
Winter gear: adults, children & babies (hats, gloves, scarves, etc)
Board games, crafting sets, playdough, legos, athletic items
Dolls and superhero figures
Earbuds/headphones (older kids)
Educational toys for baby, toddler, child
Books, puzzles, coloring books for all ages

If you have any questions regarding items needed or how to make arrangements to get them to MBCH, contact Von Hulin:

von.hulin@mbch.org
(314) 739-6811, ext. 1368

Campus Store Volunteers

Needed

Volunteers are needed to help us get ready for Christmas!

Do you secretly love to organize things? Are you looking for a way to support MBCH? Enlist your Sunday School Class, ministry team or grab a group of friends and make plans to volunteer for a couple of hours at our Campus Store on the Lowe-Frillman Campus in Bridgeton (St. Louis). For more information please contact:

Von Hulin
von.hulin@mbch.org
314-739-6811, ext. 1368

The LIGHT House Thanksgiving

Baskets

Each year The LIGHT House gives Thanksgiving Baskets to eligible families. This is a special opportunity to provide a gift of love and show our gratitude to our clients for the work and commitment they are continually making to a stronger and healthier family.

A gift of \$50 will make this special basket possible for one family. If you are interested in giving a basket please contact:

Andrea McAdam
andream.lighthouse@mbch.org
(816) 361-2233 ext 231
PO Box 22553
Kansas City, MO 64113

Campus Needs



The Branches at Brookline, Springfield

- Dining tabletop resurfaced to tolerate moisture/temperature or possibly glass top.
- Replace de-scaler with expansion tank and filter (well)
- Finish a room in barn (either as a restroom or a storage room)
- Move west gutter drain to parking pad
- Scrape and repaint exterior woodwork (porch posts and door trim)
- Fix dining room flooring that has been scarred by chairs.
- Replace bar stools

The LIGHT House Maternity Home, Kansas City

- Minor tuck pointing
- Foundation work
- Remodel and update kitchen
- Repave driveway
- Build carport for agency vehicles

Springfield Regional Office

- Replace furnace gas line
- Repaint front sign
- Repair front room tile
- Prep and paint interior walls and doors
- Replace flooring in halls and offices

Low-Frillman Campus, Bridgeton

Johnson and Thompson Cottages:

- Replace the shingles with siding
- Paint and repair dormers

Renovate Kenison Complex (Franklin and Brackenridge upstairs):

- Flooring
- Windows
- Cabinets (Franklin side only)
- Doors
- Plumbing
- Bathrooms
- Drywall
- Appliances
- Bannisters (Franklin side only)

Barnes Building: Replace back windows and repair gutters and soffit

3855 Fee Fee Road Residence: Replace windows on back porch

3838: Gutter repairs

3834 Fee Fee Road: Repair/replace roof and gutters

3832: Gutter repairs

Ranch Oak: Gutter repairs

Pavilion: Repair missing shingles and gutter repair

Gazebo: Repair gutters on

Administration Building:

- Replace flooring on third floor
- Interior painting
- Repair/replace roof

Common Areas:

- Campus wide landscaping
- Pavers in plaza

Byrne Campus, Peculiar

Gephardt House:

- Build walkway from kitchen door to driveway
- Install drainage system off back porch to reduce erosion.
- Tile bathroom/shower walls
- Kitchen cabinet replacement
- Island countertop replacement
- Garage doors replaced
- Replace flooring in office
- Replace flooring in hallway and recreation room

Country Haven

- Office built at back of house
- New flooring
- Sand and paint porch swings

Mabee House:

- Install hammock poles and hammock
- Install storage shed in yard

Common Areas:

- Install ductwork in storage building
- Install windows in storage building
- Erosion control/tiered system by kitchen door to driveway
- Shed cleanout; dumpster needed

Hutchens Campus, Mount Vernon

Wilmoth Complex:

- Replace shower units
- Install bathroom/showers in second staff bedroom
- Replace flooring in monitor room
- Install handrail on steps to Moody

Gimbel-Medearis:

- Replace flooring in main area, and bathrooms, hallways
- Repair/replace security cameras
- Install cubby space in pantry

South Haven:

- Repair/replace security cameras
- Install new kitchen cabinets
- Install cubby space in pantry
- Repair basement drainage
- Replace flooring in office

Common Areas:

- Patch and seal driveway around campus loop & south exit
- Gravel for certain driveways
- Outdoor lighting
- Replace flooring in administration building
- Build gazebo with porch swings

If you or your group would like to volunteer to meet one of these needs please contact:

Von Hulin

von.hulin@mbch.org

314.739.6811 ext 1368

CarePortal

Churches are partnering with MBCH to serve vulnerable children and families right in their communities. MBCH is now utilizing a technology platform known as CarePortal. CarePortal is connecting technology that drives action for local kids and families in crisis. MBCH staff along with staff from Children's Division, schools, and others who serve children in your area, enter vetted needs of children and their families into the CarePortal system. Once a need is entered, it notifies all the local churches who are part of our network. Your church can see all the needs that get posted in your area, then if you decide to meet a need for a child and their family, you simply click a button that says "Yes I Can Help" and the system automatically connects you to the worker who entered the request to work out the arrangements. Your church then has the opportunity to go meet the child and family, meet a physical need, and potentially form a relational connection. MBCH church engagement staff can walk you through how to get signed up and provide the training you need to get started. There is no cost to your church and no minimum number of needs you have to meet, just opportunity to get connected and be able to serve the least of these right in your community. Right now, MBCH is actively building networks of serving churches in the SW region and the St. Louis region. If you have interest or questions, please reach out to David Burch, Church Engagement Strategist, david.burch@mbch.org.

David Burch, Church Engagement Strategist



RECRUITING CHURCHES

MBCH Children and Family Ministries is currently recruiting churches in the SW region and St. Louis region to join a network of serving churches. We utilize the technology platform CarePortal to connect serving teams at your church to children and families we can serve together right in your community.

For more information
david.burch@mbch.org



CarePortal



MBCH WOMEN'S MINISTRY

We were so pleased to partner with Lifeway for two GREAT events in Kansas City, MO on August 25-26, 2023. YOU Lead was a one-day training to grow every woman's leadership potential and was offered on Friday, August 25, 2023 from 8 am – 3:30 pm at Pleasant Valley Church in KC. I was so excited to once again be joining other Lifeway trainers for this training opportunity. Then on Saturday, August 26, 2023 at Arvest Bank Theatre at the Midland in KC we welcomed Going Beyond with Priscilla Shirer back to Missouri. Anthony Evans will be leading the praise and worship segments. The Lord did great and wonderful things in the lives of the women that attended this event!

If you're in the Hannibal area of the state, we'd love to see you at Camp Inlow (Bethel Baptist Association) on September 15-16 for a GREAT women's conference. Contact me for more information.

If you're looking for GREAT NEW Bible Studies for the women in your church and community this fall, please know I have received all the newest studies from Lifeway. Among them are *In View of God's Mercies* by Courtney Doctor, *Navigating Gospel Truth* by Rebecca McLaughlin, and *When You Pray* by Kelly Minter, Jackie Hill Perry, Jen Wilkin, Jennifer Rothschild, Jada Edwards and Kristi McLelland. I'll have more new ones arriving in September as well. To borrow a Bible study, please contact me at Wanda.Shellenbarger@mbch.org or 417.529.0724 to reserve one.

Please keep watch over *The Messenger* as we are going to have NEW and very EXCITING events coming your way in 2024. We are praying and working hard to bring you great new events that we know you're not going to want to miss!

The next Women's Ministry Training Clinic will be held March 8-9, 2024 at the AmericInn by Wyndham in Branson. Registration will open in November and only the first 25 registrants will be able to attend.

We hope to see you at the Missouri Baptist Convention in Springfield on Oct. 23-24. Drop by the MBCH booth to talk with us and find out more about our 2024 events.

Wanda Shellenbarger, Women's Ministry Specialist

Bleak MidWinter

Endurance Run

January 28, 2024

Sac River Trails

- 12hr Challenge
- 6hr Challenge
- 3hr Challenge
- 1hr Challenge

Scan the QR code for more information!



SPONSORED BY OZARK MOUNTAIN GOATS TRAIL RUNNING CLUB

Anything *But* Shoes Day



Hutchens Campus held their second annual Anything But Shoes Day. This is a competition to get as creative as you can to wear something on your feet as long as it is not considered a shoe of any type. Both staff and clients are encouraged

GROUP SHOT

to participate in the day. This embodies our TBRI principle of connecting as staff helped clients bring their ideas to life.

Clients and staffs lives are hard enough and this provided a time of laughter, creativity, problem solving, and teamwork.

WINNER



RUNNER UP WINNERS



BRANSON STARS 2024

THANK YOU TO CLAY COOPER THEATER

With your generosity we are able to make a difference, one heart at a time.

For Tickets:



www.mbch.org
417.410.9033

Branson Stars will be held on April 13, 2024. Get your tickets today!



MISSOURI STATE TAX CREDITS

ALL GIFTS OVER \$100 MAY QUALIFY FOR A **70% MISSOURI STATE TAX CREDIT**

MAXIMUM TAX CREDIT WITH A GIFT OF **\$50,000!**

HOW PRC AND MHC TAX CREDITS WORK:

- 1 Donate \$100 or more to MBCH
- 2 MBCH will send you a tax credit application
- 3 Return the completed form to MBCH Foundation
- 4 MBCH will process and submit the application to the State on your behalf
- 5 The State will send you paperwork to keep for your taxes (45-90 days)

WHY DO YOU WANT A TAX CREDIT?

A tax credit is not the same as a deduction. Deductions reduce your taxable income while tax credits directly reduce the amount of tax you owe. In fact, 70% of your eligible donation to MBCH (up to \$50,000 in PRC and \$50,000 in MHC per year) may qualify for a tax credit for your business or individual Missouri tax return.

Last updated August 2023

\$50,000 GIFT

Federal Income Tax Bracket	22%	24%	32%	35%
Donation made to MBCH	\$50,000	\$50,000	\$50,000	\$50,000
Missouri State Tax Credit	\$35,000	\$35,000	\$35,000	\$35,000
Federal Tax Deductions	\$3,300	\$3,600	\$4,800	\$5,250
Missouri State Tax Deductions	\$742.50	\$742.50	\$742.50	\$742.50
Net Out-of-Pocket Cost	\$10,958	\$10,658	\$9,458	\$9,008

\$25,000 GIFT

Federal Income Tax Bracket	22%	24%	32%	35%
Donation made to MBCH	\$25,000	\$25,000	\$25,000	\$25,000
Missouri State Tax Credit	\$17,500	\$17,500	\$17,500	\$17,500
Federal Tax Deductions	\$1,650	\$1,800	\$2,400	\$2,625
Missouri State Tax Deductions	\$371	\$371	\$371	\$371
Net Out-of-Pocket Cost	\$5,479	\$5,329	\$4,729	\$4,504

\$10,000 GIFT

Federal Income Tax Bracket	22%	24%	32%	35%
Donation made to MBCH	\$10,000	\$10,000	\$10,000	\$10,000
Missouri State Tax Credit	\$7,000	\$7,000	\$7,000	\$7,000
Federal Tax Deductions	\$660	\$720	\$960	\$1,050
Missouri State Tax Deductions	\$149	\$149	\$149	\$149
Net Out-of-Pocket Cost	\$2,191	\$2,131	\$1,891	\$1,801

\$1,000 GIFT

Federal Income Tax Bracket	22%	24%	32%	35%
Donation made to MBCH	\$1,000	\$1,000	\$1,000	\$1,000
Missouri State Tax Credit	\$700	\$700	\$700	\$700
Federal Tax Deductions	\$66	\$72	\$96	\$105
Missouri State Tax Deductions	\$15	\$15	\$15	\$15
Net Out-of-Pocket Cost	\$219	\$213	\$189	\$180

PRC - Pregnancy Resource Center Tax Credit • MHC - Maternity Home Tax Credit

*This is an illustration for educational purposes only, and is not intended as professional tax or legal advice. In fact, 70% of your eligible donation to MBCH (up to \$50,000 in PRC and \$50,000 in MHC per year) may qualify for a tax credit for your business or individual Missouri tax return.

If you're interested in more information about Missouri state tax credits offered through MBCH CFM and The LIGHT House, please contact your regional representative.

Ben King, MSCM, CGPA
West/Northwest Region
 816.472.9072
 ben.king@mbch.org

Kenny Vawter, CPGA
Southeast Region
 573.241.1113
 kenny.vawter@mbch.org

David McMullin
East/Northeast Region
 573.259.3971
 david.mcmullin@mbch.org

Joe Nogalski, MDIV, CPGA
Southwest Region
 816.317.4430
 joe.nogalski@mbch.org

MBCH Foundation is an affiliate of MBCH

MBCH Foundation
 11300 St. Charles Rock Road
 Bridgeton, MO 63044

800.264.6224 • www.mbchfoundation.org

Give Hope



Hope is on the rise, reflected in the light of countless joy-bright eyes.

The news, of course, says otherwise. Darkness is determined to destroy the family by any means possible: abortion, addiction, depression, neglect. Each day brings a new grim statistic, each night looming a little closer over the souls of mere babies and children. Innocence, it seems, is a thing of the past, with loneliness, confusion, and lies thick in the air each family breathes.

While we take these issues seriously, we don't let them take away our optimism. God has promised to turn the hearts of the fathers to their children and the hearts of the children to their fathers—and at Missouri Baptist Children's Home (MBCH), we take Him at His Word. We've been working in the trenches with besieged children, youth, and families since 1886, and **we've seen Jesus redeem all kinds of grief.** The challenges we face may change, but our mission and determination remain the same as we stand unflinching upon the rock of ages.

As MBCH President Russell Martin prepares for retirement and helps to onboard his successor to keep serving as a beacon of truth, we thank God for all He has done through our history while preparing to adapt to a new season of change. In President Martin's 46 years leading in various roles at MBCH, we've maintained excellent financial viability. Thanks to your contributions, we're currently launching two new programs:

- **Youth Drop-In Center** – The Martin Youth Center, opening Fall 2023, will provide a safe place for homeless teens to eat, shower, wash their clothes, and hang out while connecting them with a case manager to assess needs.
- **CarePortal** – We partnered with CarePortal, a networking tool that helps us empower local churches across Missouri to serve as the primary community resource that at-risk families turn to for support.

In 2022 alone, MBCH and The LIGHT House served 2,853 children, youth, and families. From transitional housing and anti-trafficking services to pregnancy support and foster care training, we've helped shattered families reunite, found forever homes for children, equipped mothers to care for their babies, and provided residential care for children, youth, and developmentally disabled adults. Along the way, we made love extravagant, building genuine relationships so families caught in the crosshairs know they always have somewhere to go.

Christ offers even the most broken a chance at redemption—and He offers us a chance to join in His recreative work. The need now is as great as ever. To express His Love and actually be Jesus' physical hands and feet, we need baby gear, childcare providers, case workers, training resources, facility updates, counselors, and so much more.

Would you consider stepping out in faith by becoming a monthly supporter and going deeper in your commitment to supporting Missouri families? This eternal work is only possible thanks to your donations, and every cup of cold water meets a desperate need.

We know this work is not in vain: we've seen empty eyes reignite with life, time and time again. Thank you for caring about the youngest and the least of these and for helping us bring the light of hope to those who need it most.

James Morrow, Vice President, MBCH Foundation

mbch SUPPORT

Missouri Baptist Children's Home
11300 St. Charles Rock Rd
Bridgeton, MO 63044
800.264.6224
www.mbch.org - click "donate"

Regional Representatives:

Ben King - West/Northwest Region
816.472.9072; ben.king@mbch.org

David McMullin - East/Northeast Region
573.259.3971; david.mcmullin@mbch.org

Joe Nogalski - Southwest Region
816.317.4430; joe.nogalski@mbch.org

Kenny Vawter - Southeast/Central Region
573.241.1113; kenny.vawter@mbch.org

Provide Healing & Restoration

mbch BIRTHDAY OFFERING

The giving of Birthday Offerings for the Children's Home has been a regular part of Baptist life for more than 120 years. This offering provides a way for you to celebrate your birthday and an opportunity to share in this ministry.

If you have missed out on this caring tradition, we invite you to join hundreds of other individuals in the Annual Birthday Offering.

If you need any birthday supplies (mugs, pencils, cards, offering envelopes, or banks), order online (www.mbch.org) or call (800) 264-6224.

Honorariums & Memorials

Honorariums

Ambrose Blair by Mr. and Mrs. Michael Streicher (Ozark)
Sutton & Sawyer Brown by Ms. Janice Bell (Caruthersville)
Lois Forsythe by Mr. Alan North (Woodway, Texas)
Patti Light by Mr. and Mrs. Shawn M. Light (Lebanon)
Elizabeth Potts by Mr. and Mrs. Russell L. Martin (Saint Charles)
62nd Wedding Anniversary by Mr. and Mrs. Phillip Jett (Alton)

Memorials

Dessie Admire by Mr. Floyd Twyman (Conway)
Kenneth M Anders by Mrs. Joyce Anders (Rushville)
Brian Avery by First Baptist Church-Sikeston (Sikeston)
Barbara Meredith Barton by Mrs. Jeannette Meredith Smith (Jackson)
Robert and Mary Barton by Mr. and Mrs. Charles Brown (Louisiana)
Ken and Emma Brown by Mr. and Mrs. Charles Brown (Louisiana)
Mrs Tiney Bledsoe by Second Baptist Church (Poplar Bluff)
Kenneth S Bruns by Mr. and Mrs. Tom Robinson (Eldon); Mr. and Mrs. Christopher Goose (Eugene); Mr. and Mrs. Stephen Parker (Eldon); Mr. and Mrs. Billy W. Schrader Jr. (Prairie Home)
Carl Burnley by First Baptist Church (Buckner); Mr. and Mrs. Carl Jordan (Buckner); Ms. Linda Allen (Hallsville, Texas)
Karen Carroll by Ms. Carolyn J. Johnson (Gainesville)
Logan Clark by Summit Woods Baptist Church (Lees Summit)
Dorothy Coday by Mr. and Mrs. Dennis D. Uzzell (Hartville)
Gary Dawson by Mr. Richard Garrett (Carl Junction); Mrs. Lynne Stull (Oronogo)
Ernestine Dean by Alta Vista Baptist Church (Weatherby); Mr. Donald R. Stone (Cameron)
Edna Deaton by Parkcrest Dental Group (Springfield); Mr. and Mrs. Russell L. Martin (Saint Charles); Mr. and Mrs. Ron Dent (Springfield); Bill Kell (Springfield); Mr. and Mrs. Rick Rowden (Fair Grove); Ms. Juanita Harp (Fair Grove); Mr. and Mrs. Gary J. Camp (Springfield)
Doris Demore by Mr. and Mrs. Hershel J. DeMore (Springfield)
Mr. Marty Desgranges by Second Baptist Church (Poplar Bluff)
Don Drake by Mrs. Beth Drake (Seneca)
Shirley Jo Dryden by Mr. and Mrs. William M. Ronan (Saint Charles)
Rosa Marie Fisher by Ms. LaRae Ganch (Penn Valley, California); Mr. and Mrs. Austin Arnold (Washington, Illinois); Mr. and Mrs. Dunn Families (Coldwater, Michigan); Ms. Mary Sue McKay (Hayti)
Ted Gleason by Hopewell Social Club

(Kansas City); Ms. Pamela J. Resz (Kansas City); Mr. and Mrs. Gary Miller (Liberty)
Marvin R Good by Judge and Mrs. Kent Howald (Oklahoma City, Oklahoma)
Mabel Goodpaster by Mr. Gary Goodpaster (Springfield)
Stanton Gragg by Summit Woods Baptist Church (Lees Summit)
Ralph Haag by Mr. and Mrs. Charles E. Dayton (St. Louis); Mr. and Mrs. Patrick Breedlove (Wentzville); Mr. and Mrs. Gerald Burmeister (St. Louis); Ms. Judith Thompson (St. Louis); Mr. and Mrs. Herman Rea (Florissant); Mr. and Mrs. Donald D. Hanks (Bridgeton); Salem Baptist Church (Florissant); Mr. and Mrs. Kyle Haag (St. Charles); Dr. Nettie Collins-Hart, District Sup. (Florissant); Ms. Norma Haag (Saint Louis); Ms. Judith Simmons (Fenton); Ms. Patsy A. Wickham (St. Louis)
Helen Hartzog by First Baptist Church (Sikeston)
Betty Hayes by First Baptist Church (Sikeston)
Arthur Haynes by Mr. and Mrs. William M. Ronan (Saint Charles)
Elizabeth Haynes by First Baptist Church (Sikeston)
Bonnie Holcumbrink by Curryville Baptist Church (Curryville)
Lottie Howe by First Baptist Church (Sikeston)
Bonnie Jewell by Ms. Gina Musick (Olathe, Kansas)
David Jones by Summit Woods Baptist Church (Lees Summit)
Robert Kenison by Mr. and Mrs. Chris M. Brown (Pittsfield, Illinois); Mr. and Mrs. Charles L. Loos (Payson, Illinois); Mr. and Mrs. Anthony Cameron (Quincy, Illinois); Mr. and Mrs. Gary Bushmeyer (Quincy, Illinois); Mr. and Mrs. Wayne Dedert (Quincy, Illinois); Mr. and Mrs. Russell L. Martin (Saint Charles); Mr. Jack L. Feaster (Ballwin); Mr. and Mrs. Walter W. Baker, Jr. (Hannibal); Mr. and Mrs. Jeffrey Funkenbusch (Palmyra); Mr. and Mrs. Michael Brennan (Saint Louis); Ms. Eva Hammons and Ms. Melba Brooks (Springfield); Mr. and Mrs. Eric E. Schultz (Virginia Beach, Virginia); Missouri Alliance for Children & Families
Janice Kirklink by First Baptist Church (Vandalia); Curryville Baptist Church (Curryville); Mr. and Mrs. Danny Lewis (Curryville); Mr. and Mrs. Dylan J. Brown (Vandalia); Mr. and Mrs. Averil Beshears, Jr. (Vandalia); Mr. and Mrs. Rusty Strother (Vandalia); Mr. and Mrs. Richard Hammett (Ladonia); Mr. and Mrs. James A. Lowry (Mexico); Rick Branstetter (Jefferson City); Mrs. Donna B. Hoover (Vandalia)
Gary Lake by Mr. Bruce Lake (Woodstock, Georgia)
Morris Lowe by Mrs. Esther Lowe (Knob Noster)
Brian Martin by Mr. and Mrs. Russell L. Martin (Saint Charles)
Dorothy Martin by Mr. and Mrs. Russell L. Martin (Saint Charles)

Gladys Ruth Martin by New Salem Baptist Church (Ionia)
Harold L Martin by Mr. and Mrs. Russell L. Martin (Saint Charles)
Marlyn Martin by Mr. Keith Jacobs (Bogard); Mr. and Mrs. Harley L. Miller (Kansas City); Mr. and Mrs. Brad Eschenbach (Tina); Mr. and Mrs. Willard Wood (Norborne); Mr. and Mrs. Mike Bredehoeft (Alma); Mr. and Mrs. Brian K. Martin (Turney); Mr. & Mrs. James Lollman (Gladstone); Ms. Petrie L. Flick (Carrollton); Mr. and Mrs. Nathan Owen (Norborne); Mr. and Mrs. Robert Kipping (Carrollton); Ms. Candiss Hart (Hale); Mr. and Mrs. Robert Furney (Gladstone); Mr. and Mrs. Keith Windmeyer (Grand Pass); Ms. Lois Forsythe (Carrollton); Mr. and Mrs. Michael N. Weber (Kansas City); Mr. and Mrs. Robert Buhmester (Lexington); Mr. and Mrs. Steven R. Martin (Excelsior Springs)
Melvin Martin by Mr. Keith Jacobs (Bogard)
Comer Meadows by First Baptist Church (Sikeston)
Ruby Morrow by Mr. and Mrs. James R. Morrow (Eldon)
Hubert Newman by Mr. and Mrs. Fritz Hyde (Midland, Michigan); Higbee Baptist Church (Higbee); Mrs. Marlene Newman (Warrenton); Mr. Weimouth Brown (Warrenton); Mr. Thomas Snetheir (O'Fallon); Mrs. Marlene Newman (Warrenton)
Gary Parker by Mr. and Mrs. Kavan Stull (Oronogo)
Nola Pattengill by Mr. and Mrs. Herman Rea (Florissant); Ms. Shirley Hart (Halltown); Salem Baptist Church (Florissant); Mr. and Mrs. Allan Crader (Ozark); Mr. and Mrs. Jim Wolfe (Florissant); Ms. Sheila A. Wheelley (Claremore); Mr. Larry Pattengill (Hartsville, South Carolina)
Stanely Patterson by Summit Woods Baptist Church (Lees Summit)
Bertha Pavlakes by Mr. and Mrs. Kenneth Cole (Navarre, Florida); Mr. and Mrs. Aaron Rapport (Pittsburgh, Pennsylvania); Bayer Labor and Employment Law Team
Rv John R Perryman by Mr. and Mrs. Hershel J. DeMore (Springfield)
Marjorie Perryman by Mr. and Mrs. Hershel J. DeMore (Springfield)
Gene and Deborah Pointer by First Baptist Church (Sikeston)
James K Pointer by New Salem Baptist Church (Ionia)
Bonnie Pyle by First Baptist Church (Sikeston)
Orville Rector by Ms. Madonna A. Vaydich (Sioux City, Iowa); Mr. and Mrs. George E. Bayless (Higginsville); Missouri Baptist Convention (Jefferson City); Mrs. Charlene Rector (Higginsville); Ms. Wilma Runyan-Grant (Higginsville); Mr. and Mrs. Deverne King (Rolla); Ms. Charlene Trought (Higginsville); Ms. Jane Scott (Higginsville); Mr. and Mrs. Tommy Jarvis (Higginsville); Mr. and Mrs. Ernest Schloman (Higginsville); Mr. and

Mrs. Larry Barb (Green Ridge); Dr. and Mrs. Gregory Fine (Higginsville); Mr. and Mrs. Kevin Fowler (Higginsville); Dr. and Mrs. David Pulliam (Corder); Mr. and Mrs. Curtis J. Wood (Higginsville); Mr. Forrest S. Hoefer (Higginsville); Mr. and Mrs. Jack R. Green (Higginsville); Mr. and Mrs. Leonard Stoll (Corder); Mr. and Mrs. Terry D. Madole (Higginsville); Mr. and Mrs. Michael A. Jarvis (Higginsville); Ms. Judy L. Small (Concordia); Mr. Harold G. Finke (Green Ridge); Mr. and Mrs. Brian L. Cornelius (Lees Summit); Mr. and Mrs. Ron Duncan (Higginsville); Mrs. Linda L. Hunt (Sedalia); Mr. and Mrs. Ray Frevert (Higginsville); Higginsville Brick & Tile Co. (Higginsville); First Baptist Church-Higginsville (Higginsville); Mr. and Mrs. J. Wayne Merrill (Columbia)

Dale Riffle by Curryville Baptist Church (Curryville); Mr. and Mrs. Danny Lewis (Curryville)

Deborah Roberts by Summit Woods Baptist Church (Lees Summit)

Larry J Rowland by Mr. and Mrs. John Frazee (Kansas City)

Harold Sampson by Ms. Mary L. Howard (Warsaw); Mr. and Mrs. Jack Sigler (Blue Springs); Mr. and Mrs. Alan Klein (Raymore); Mr. and Mrs. Phillip D. Woodard (Warrensburg); Mr. and Mrs. Philip R. Shumard (Springfield); Mr. and Mrs. Robert L. Adams (Independence); Mr. and Mrs. Rich Lawson (Warrensburg); Ms. Linda Meckem (Plato); Mr. Marvin Murphree (Springfield); Mr. and Mrs. Curtis L. Radel (Omaha, Nebraska)

Gary Shoemaker by Mr. and Mrs. Kavan Stull (Oronogo)

Irene Blix Spencer by Ms. Sandy Atkinson (Jefferson City)

Thomas Stahr by Mrs. Dixie Stahr (Saint Louis)

Jean Stevens by Ms. Donna J. Morris (Savannah)

Barbara A Stiles by Mr. and Mrs. Jim Gollahon (Saint Petersburg, Florida); Fairview Baptist Church (Laquey); Mr. and Mrs. Russel Dixon (Waynesville); Ms. Margaret M. Quinn (St. Robert); Ms. Audrey J. Morris

Waynesville Memorial Chapels and Crematory (Waynesville); Ms. Joan West (Charlotte, North Carolina); Ms. Kay Carlisle (Rock Hill, South Carolina); Mr. and Mrs. William A. Snyder (Daleville, Virginia)

Phil Tatum by First Baptist Church (Farmington)

Coach John E Titus by Mr. Kurt Gebhard (Plymouth, Michigan); Mr. William Moskoff (St. Louis)

Steve Visek by Mr. and Mrs. William M. Ronan (Saint Charles)

Linda Vroman by First Baptist Church (Sikeston)

Dorothy Watson by First Baptist Church (Farmington)

Roger Wessel by Mr. and Mrs. Patrick Pieper (Crestview, Florida); Mr. and Mrs. Douglas Kimmel (Unionville); Mr. Bud Stottlemire (Unionville); Ms. Beverly S. Worley (Unionville)

Norma J Yelton by Ms. Anna Mae Wofford (Bland)

**Honorarium and memorials received
April 1, 2023 - July 28, 2023.**

mbch CALENDAR OF EVENTS

Upcoming Events

Bleak Midwinter Run

January 27, 2024

7 am - 7 pm

Sac River Trails, Springfield, MO

The 2nd annual Bleak Midwinter Endurance Run, is a timed endurance run on a 4.1 mile loop trail! Four different timed events are offered: a 12, 6, 3, and 1 hour run option. It is a fun and enjoyable day participants, supporters and volunteers with great support, lots of food, and fun swag. All proceeds go to support the ministry of MBCH! Registration is now open!

For more information contact Special Events:

specialevents@mbch.org

417.410.9033

Register online at: www.ultrasignup.com



Branson Stars

April 13, 2024

10 am - 12 pm

Clay Cooper Theater, Branson, MO

Branson Stars is a silent auction and benefit concert showcasing some of the best Branson performers. All proceeds from the auction and concert go to support MBCH in its mission of bringing hope, healing and restoration to Missouri families.

For more information contact Special Events:

specialevents@mbch.org

417.410.9033

Register online at: www.mbch.org



Strawberry Festival

June 8, 2024

First Baptist Church, Arnold, MO

For more information contact Special Events:

specialevents@mbch.org

417.410.9033

Women's Ministry

September 18-19: BSAAM Annual Meeting
Springfield, MO

October 13-14: Gasconade Valley Baptist
Association Women's Event

March 8-9, 2024: Women's Ministry Training Clinic
Branson, MO



Missouri Baptist Children's Home

11300 St. Charles Rock Road

Bridgeton, MO 63044-2793

THE MESSENGER

Missouri Baptist Children's Home



In this issue:

- **Ministry Updates**
- **Staff Spotlight**
- **Christmas Giving**
- **Client Stories**

A Cooperative Program supported
entity of the Missouri Baptist Convention

August 2023