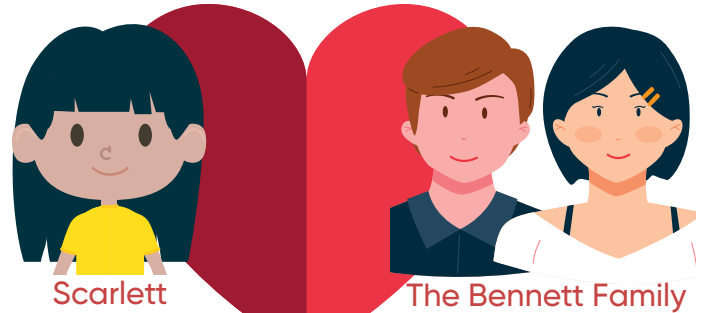


love your NEIGHBOR

Scarlett came to MBCH Children and Family Ministries with a blue backpack, three outfits, and a stuffed tiger—and that was it. Neglect was all she had ever known, and few foster families could cover the cost of starting from scratch. For that matter, neither could most MBCH donors.

So instead, help came one gift at a time. It started with a couple named Michael and Cindy, who gave \$100 so Scarlett could pick out new clothes (like a dress, red sweater and a pants). After that, a college student named Sarah donated \$50 to provide Scarlett’s meals during her first week in her foster home. Every week afterwards was the same: like manna, donations came one by one. There was \$20 from Nick, a high school sophomore, for one session of Christian counseling; \$250 that a class of third graders raised that helped send Scarlett on a retreat; and \$70 that Joe and June Weston family gave to give Scarlett’s foster parents respite care so they could unwind and process for a few days.

Now, Scarlett and the Bennetts are looking forward to their next step: adoption. It will take just \$100 to provide the Bennetts with an adoption assessment so they can continue walking with Scarlett toward restoration. They don’t know where they’ll find the money, but they count up God’s promises instead of cash, knowing manna will come when they need it most.



Missouri Baptist Children’s Home
800.264.6224 • www.mbch.org/neighbor



BE hope
healing
restoration

Jesus asked,

“Which of these do YOU think was a neighbor to the man who fell into the hands of robbers?”

The expert in the law replied,

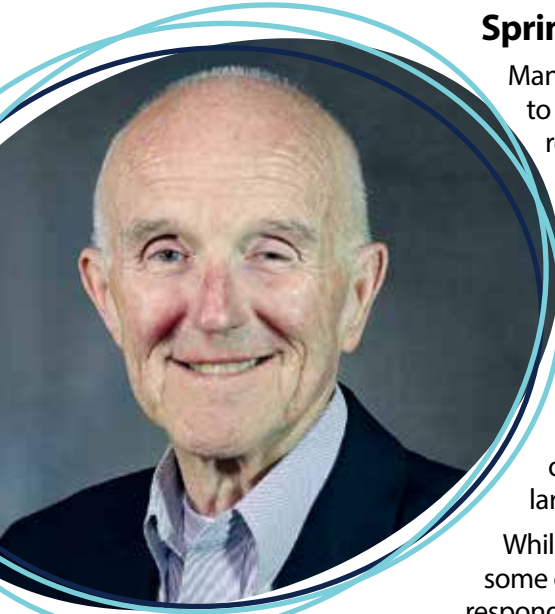
“The one who had mercy on him.”

LUKE 10

verse 25-37

President's Update

Spring 2024



Many of you know of my pending retirement June 30, 2024, so this is my final opportunity to express my deepest thanks and gratitude to the readers of The Messenger. It has been a real pleasure to have served our Lord by participating in the varied ministries of MBCH. He has blessed me beyond measure—my cup runs over.

As I reflect back on my years at MBCH, it will be 47 in June, I recall that when I came as the first business manager we were basically a residential center (group homes on the campus in Bridgeton and two group homes in the country near Gray Summit), a small office in Kansas City, and some counseling centers scattered around parts of the state.

Today, we provide services out of five distinct residential locations and provide community-based services in the greater Kansas City area, Springfield, Joplin, the greater St. Louis area, and southeast Missouri. While residential is still an important piece of what we do, our community-based services in foster care and pregnancy services is far larger as to the number of clients served.

While it is impossible to capture all the changes I have seen in this article, let me highlight some of those that I think may be the most relevant and critical as we fulfill our mission to respond to the needs of children, youth, and families to make a lasting difference in their lives.

Russell Martin, President

First, as already stated, we have moved from being a primarily residential provider to doing much more through community-based services.

We have moved from a behavior modification model to that of being a trauma-informed agency, which is much more therapeutic and beneficial to the children and families we are privileged to serve.

We have developed an initiative of church engagement, which is our program to work with the local churches to enable them to become much more comfortable and effective in ministering to the needs of families in their local communities.

We added services to intellectually and developmentally disabled adults to provide them a safe, Christian environment in which to prosper.

We added The LIGHT House to our family of corporations, which gives us a stronger presence in the greater Kansas City area, particularly as it relates to pregnancy services, both maternity home and in-home.

We added anti-trafficking services to minor and adult females who have been trafficked or are at risk of being trafficked.

And I could go on. But suffice it to say it has been our purpose to be responsive to the needs of families and to be flexible in our service delivery systems in order to be relevant. But through it all and most importantly, to also remain faithful to Christian values and to share hope, healing, and restoration through the gospel of our Lord Jesus Christ.

We could not do this without the faithful prayer and financial support of those who join hands with us in this ministry. My thanks to each and every one of you for being responsive to God's call and sharing your time, talents, and resources with us that we might have an impact on those who are experiencing challenges and difficulties.

It has been a joy beyond measure, but it is time to pass the reins. I am extremely happy that Dr. Juston Gates has been selected by the board of trustees to assume the presidency of MBCH effective July 1. I am convinced he is God's man for this position for this time. I would ask you to pray for him, support him, and encourage him as he builds on the solid foundation of those women from five Baptist churches who opened the doors of the Baptist Orphans Home on April 1, 1886.

To God be the glory then; to God be the glory now; to God be the glory forevermore!



Welcome!

Dr. Juston Gates



**Juston & Amanda
Gates**

Dr. Gates and his wife, Amanda, took the time to speak with each member of the search committee. They are very approachable and ready to dig in and be involved. As Dr. Gates travels to many of our churches, our supporters will enjoy hearing his heart for helping families find hope, healing, and restoration.

- Leah Capps, Chairman, MBCH-CFM Board of Trustees

In January of 2023, Russell Martin, current MBCH President, announced his plans to retire effective July 1, 2024. Soon after, a nationwide search for his successor began in earnest. On January 23, 2024, the MBCH Board of Trustees invited Dr. Juston Gates to lead, guide, and steward this ministry as its next President.

Martin expressed his approval, *"I am pleased with the decision of the search committee to recommend Dr. Juston Gates as the next President of MBCH. I believe he has the leadership skills that are needed at this time to lead the agency to fulfill its mission. I say this because I have observed Dr. Gates in his role on the MBC Executive Board and particularly as he serves as Chair of the Administrative Committee. His experience and background along with his sense of God's call to serve Him in an executive position should serve him well in this role."*

The MBCH Board of Trustees is, of course, equally excited about Dr. Gates's coming.

"The board appreciates Dr. Gates's approach of coming in to learn about the organization more fully and to listen before he begins to evaluate for the future. We are looking forward to his joining the MBCH team and learning more about the work we are doing across the state. Giving our employees a chance to get to know Dr. Gates and in turn for Dr. Gates to hear the compassion they have for their responsibilities will aid him in future decisions." - Leah Capps, Chairman, MBCH-CFM Board of Trustees

Dr. Gates will begin his transition into the presidency on May 1 in preparation of the full transition by July 1. Dr. Gates is not new to Missouri or the ministry of MBCH. He has been Senior Pastor of First Baptist Church in Forsyth, Missouri, since August 2012, with deep ties to Missouri Baptist Convention life and the ministry of MBCH.

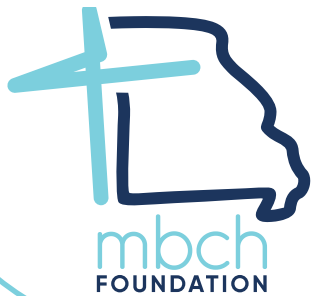
Dr. Gates has been married to his wife Amanda for 25 years. They are the proud parents of three children: Elizabeth, Caleb, and Leah. Dr. Gates has pastored churches in Mississippi, Tennessee, and Texas since 2000, and in Missouri since 2012. Prior to entering the pastorate, he worked in law enforcement with police departments in Memphis, TN, Tupelo, MS, and Allen, TX, while also serving as a Federal Agent with the United States Border Patrol. His pastor's heart mixed with his desire to serve and protect the defenseless in difficult situations means Dr. Gates is uniquely equipped to lead with a shepherd's heart and a servant mindset.

Dr. Gates earned a Master of Divinity (M.Div.) from The Southern Baptist Theological Seminary in Kentucky and his Doctor of Ministry (D.Min.) from Luther Rice Seminary in Georgia. His previous roles, experiences, and education have prepared Dr. Gates to lead MBCH as the organization fulfills its mission through direct service to children, youth, and families, and by supporting local churches in their efforts to do the same.

"I anticipate maintaining the great work already being carried out by MBCH and its affiliates, and building on that solid foundation as we enter into new and exciting areas and aspects of ministry to children, youth, and families across our state." - Dr. Juston Gates, DMin

Please pray for the Gates family and for everyone serving or being served by MBCH throughout this season of getting acquainted, of learning, and of change. And, please join us in offering a warm welcome to Dr. Juston Gates and his family!

HOPE • HEALING • RESTORATION



MBCH Foundation is an affiliate of MBCH

Employee of the Year

Dayna Eckhardt
Foster Family Care Specialist
Lowe-Frillman Campus



MISSOURI STATE TAX CREDITS

ALL GIFTS OVER \$100 MAY QUALIFY FOR A **70% MISSOURI STATE TAX CREDIT** MAXIMUM TAX CREDIT WITH A GIFT OF **\$50,000!**

HOW PRC AND MHC TAX CREDITS WORK:

- 1 Donate \$100 or more to MBCH CFM or "The LIGHT House"
- 2 Contact your Regional Representative so MBCH can send you a tax credit application
- 3 Return the completed form to MBCH
- 4 MBCH will process and submit the application to the State on your behalf
- 5 The State will send you paperwork for your taxes (45-90 days)

WHY DO YOU WANT A TAX CREDIT?

A tax credit is not the same as a deduction. Deductions reduce your taxable income while tax credits directly reduce the amount of tax you owe. In fact, 70% of your eligible donation to MBCH (up to \$50,000 in PRC and \$50,000 in MHC per year) may qualify for a tax credit for your business or individual Missouri tax return.

Last updated February 2024

If you're interested in more information about Missouri state tax credits offered through MBCH CFM and The LIGHT House, please contact your regional representative.

Ben King, MSCM, CGPA
West/Northwest Region
816.472.9072
ben.king@mbch.org

David McMullin, CGPA
East/Northeast Region
573.259.3971
david.mcmullin@mbch.org

Joe Nogalski, MDIV, CPGA
Southwest Region
816.317.4430
joe.nogalski@mbch.org

Kenny Vawter, CPGA
Southeast Region
573.241.1113
kenny.vawter@mbch.org

Return completed form to:
MBCH
11300 St. Charles Rock Road
Bridgeton, MO 63044

Dayna Eckhardt has been described by coworkers as not only amazing - she is constantly amazing. She is an anchor and a bright light with tenacity and a sweet spirit sprinkled in.

Dayna knows all of the details of each of her cases and is timely with her reports and processes. Permanency for her families is a constant priority for Dayna and all along the way she gracefully holds the balance of safety, connection and accountability for each of her kids and families. Her calming and even-keel presence as well as her willingness to help team members is a gift. She truly goes above and beyond, over and over again.

Due to staffing shortages, Dayna has very gracefully carried extra cases, often carrying almost a double case load. Dayna's gift of planning and her commitment to her kids has allowed her to fulfill this responsibility like few others.

Dayna lives out our mission statement of "Serving God by responding to the needs of children, youth and families to make a lasting difference in their lives".



Student-led Baby & Mom Supply Drive

Andrea McAdam, Community Program Director



Volunteer students

In the fall semester, the students choose different community agencies for a volunteer project. The LIGHT House was blessed to work with 4 outstanding neighboring high school students this year!

The students from the Northland CAPS program communicated, planned, and organized a baby and mom supply drive at Warren Hills Elementary School, Pleasant Valley Baptist Church, and Second Baptist Church in Liberty, MO. The students collected nearly 650 items and delivered the truckload of items to The LIGHT House! The books, bottles, sippy cups, clothing, diapers, and toiletries will be stocked in our Boutique for the moms to “purchase” these items with points earned by attending parenting educational classes.

To witness the hearts of high school students wanting to give back to their community provides all the warm fuzzies! It was a great way to end 2023 as we head into 2024!

Immediate need for orthodontic care!

Are you an orthodontist or do you know an orthodontist who shares our mission? Two of our clients are in need of orthodontic care. Both clients have had previous orthodontic care but through life circumstances, have not been able to continue their care. We would love to provide these clients with the care they need to set them on a path to success medically and financially!

If you have information, please contact Julie at julieb.lighthouse@mbch.org

What is The LIGHT House?

The LIGHT House is a multi-faceted pregnancy services ministry that includes residential services in a wonderful large home that is clean, beautifully furnished, and private. In addition to the maternity home, The LIGHT House has expanded their impact with in-home pregnancy services and ongoing outreach programs.

The maternity home is located in the Kansas City metro area and young ladies are housed twenty-four hours per day, seven days per week. Parents or guardians are encouraged to stay in contact with their daughters while they live there.

If you or someone you know needs support, call or text our 24-hour HOPE Line at 816-916-4434 or email lighthouse@mbch.org.

816.361.2233 • www.lighthousekc.org

The LIGHT House BABY BOTTLE DRIVE

Make contributing easy by distributing empty baby bottles to collect money for The LIGHT House. Participants can collect money at home or send a pro-life message by setting up the bottles within their workplaces or businesses.

Reach out to your Regional Representative for fundraising baby bottles and informational materials about The LIGHT House ministry.

mbch.org/baby-bottle-drive



Client Needs



- Graco Snugride infant car seat
- Graco Pack 'n Play On the Go Playard (with bassinet insert)
- Graco Pack 'n Play sheets
- Sleepsacks (size 3-6 months)
- Sleep swaddles (size NB and 0-3 months)
- Diaper rash cream
- Breast pads
- Reusable water bottles with lid
- Cozy socks
- Jesus Story Book Bible (English, Spanish, and Bilingual)
- Bible Stories for Little Ones (Board Book)
- Spring/summer clothing (sizes 24 months-4T)
- Diapers (sizes 5-7)
- Pull-ups (all sizes)
- Wipes (non-scented and sensitive)

Walmart List



- Baby toiletries
 - body wash
 - shampoo
 - lotion
- Mom toiletries:
 - body wash
 - shampoo
 - deodorant
 - toothbrush
 - toothpaste

Amazon List



Missouri Baptist Children's Home

Wish List

Back to School

Clear book bags/packs only
Scientific calculators
Graph paper
3 Ring pocket folders
Highlighters
Index cards
Black pens
Individual tissue packs
Educational toys - birth to 2yrs
(no stuffed animals please)
Wii and Xbox games (rated E)

Baby Items

Formula (Enfamil, Similac, Neuro pro)
Baby onesies-newborn-6 months
Baby socks
Baby bath towels and wash cloths
Crib sheets
Baby wash & shampoo
Diaper cream
Baby lotion
Diapers 4, 5, 6
Pull ups 2T, 3T, 4T, 5T

Clothing

Sweatpants (male and female- all sizes)
Leggings (all sizes)
T-shirts (male and female- all sizes)
Pajamas -boys/girls/men/women - All sizes
Girls' underwear 2T, 3T, 6
Boys' underwear 4T, 5T, 6-8, 14-16
Women's underwear 4, 5, 6, 7
Men's underwear L, XL

Household Items

Twin sheet sets
Comforter's sets- twin and full size
Kitchen towels
Dish cloths
Bath towels
Hand towels
Wash clothes
Shower curtains
Rubber bathmats
Rug type bathmats
Small trash cans/kitchen trash cans
Bed pillows

Dishes
Glassware
Utensils
Cooking utensils
Stove top pans
Ziploc bags (all sizes)
Small Air fryers
Coffee makers
Can openers (manual)

General

Work gloves
Paintbrushes

Hygiene items

Hair care products (Cantu brand)
Dandruff shampoo
Deodorant (solid)
Lotion
Body wash
Facial tissues

For questions regarding items or how to make arrangements to get them to MBCH, contact Von Hulin by email at von.hulin@mbch.org or call (314) 739-6811, ext. 1368.

Anti-Trafficking Services

Volunteers *Needed*

Young people and adults who are either at risk or have been trafficked need your help. If you or your group are interested in learning more about volunteering with this program in the Kansas City region or the St. Louis region, please contact Von Hulin at von.hulin@mbch.org or 314-739-6811, ext. 1368.

Depending on your level of service, background screenings and trainings may be required and will be of no cost to you.

Campus

Volunteers *Needed*

Volunteer opportunities for one-time projects or ongoing projects are available in the St. Louis area on the Lowe-Frillman campus in Bridgeton.

We are looking for volunteers to work in the campus store organizing and preparing donations. We are also need help with yard work and landscaping project around the campus. For more information, contact:

Von Hulin
von.hulin@mbch.org
314-739-6811, ext. 1368

God's Ability to Heal

Five-year-old Jenny charged into Margo and Tony Smith's life like an explosion. She could light up a room with her electric smiles and silliness—but more often, she burst into tantrums and threats that plunged the whole world around her into darkness. As a preschooler, she was regularly being removed from the classroom due to her aggressive behaviors, like hissing or making animal noises whenever an adult tried to talk to her. Interacting with other children was equally difficult, as Jenny constantly resorted to yelling, screaming, throwing things, or taking wild risks when she experienced any emotional upset.

Now, Jenny was in kindergarten, and the social worker who placed her with Margo and Tony as her new foster parents gently let them know that her case was hopeless. "She's damaged," the case worker explained. With a long list of diagnoses, including Reactive Attachment Disorder and Disruptive Mood Dysregulation Disorder, Jenny's behaviors would never change. Margo and Tony's faith in God's ability to heal was what had originally led them into foster care. Soon, however, even they began to lose hope. Margo did everything she could to keep Jenny safe whenever she launched into another tantrum, but Jenny could never feel safe inside, no matter what Margo did. Jenny was always seeking attention, strong hugs, and movement, and Margo and Tony quickly grew weary as they took the brunt of Jenny's chaos.

After eight months of trying everything they could think of, the Smiths were at the end of their rope—but they still weren't willing to give up on Jenny. In spite of everything, they chose to believe that their daughter was more than the big reactions everyone else defined her by. After reaching out to multiple support services, they connected with MBCH Children and Family Ministries (CFM) and received a Treatment Family Care support worker, who taught them how trauma had affected Jenny's brain. The MBCH CFM support worker gave Margo and Tony new hope that with careful planning, effective boundaries, and trust-building techniques, healing was still possible for Jenny. As the Smiths implemented the strategies they had learned from their Treatment Family Care support worker, Jenny gradually began responding to them differently. She finally had a language to understand the safety, love, and trust that Margo and Tony had been trying to communicate with her all along; and as a result, everything changed.

Three years after Jenny came to live with Margo and Tony, her name officially changed to Jenny Smith. Today, she's a vibrant second grader who brings extra sunshine into the classroom instead of storms. "Jenny was chosen to be part of our family," Margo says. "We just needed to see where we were called to be her parents."

As it turned out, the case worker was right: Jenny's situation truly was impossible—but Margo and Tony know the God who delights in taking on impossible cases. With the support of MBCH CFM Treatment Family Care, Margo and Tony learned the research-backed techniques that helped soothe Jenny's turmoil so she could step into the strong, safe pastures of God's peace.

BE hope
healing
restoration



No Better Organization than the Church to Serve Children and Families

When MBCH CFM launched our Church Engagement initiative in 2019, our primary aim was to engage with local churches and offer them opportunities to connect with and serve children, youth, and families right in their local neighborhoods. We pay particular attention to opportunities for churches to have relationship building encounters with children and families, because we believe that relationships can be influential and sometimes transformational. Many do not understand that most families engaged in child welfare or who are at risk of child welfare involvement tend to be somewhat isolated without a lot of social/relational capital, so when crisis happens, they have no one to turn to for advice or support. When churches begin serving them and developing relationships with them, this not only builds their social/relational capital, and their longer-term social support, but it also provides an opportunity for them to be influenced by positive relationships and ultimately the gospel. There are some misconceptions about families involved in the child welfare system, some think they are horrible people or dangerous people. This is simply not the case most of the time, in fact, when you look at the statistics on why children enter state custody, the percentages for severe physical or sexual abuse are low, most children enter custody for issues related to neglect. Neglect is a broad category and includes things like issues related to poverty, substance abuse, mental health or domestic violence. When you look at the majority of these families, at least for the most part, you don't feel like they are horrible people that don't love their children, instead you wonder what has happened to get them to this place, and what kind of grace and compassion would Jesus want us to display to them. This is why I believe there is no better organization that exists than the church to get engaged with these families and children and help them find hope, healing, and restoration.

Take a look below at some current opportunities for churches to partner with MBCH. If you have interest in any of the ministries described below, please reach out to David Burch, Church Engagement Strategist for MBCH at david.burch@mbch.org.

- **CarePortal.org:** Use technology to connect your church with opportunities to meet a physical need and gain a relational opportunity. There is no cost to the church and no minimum number of needs they have to meet. MBCH is an Implementing Partner with CarePortal and for right now primarily focused on St. Louis and the SW region, with hopes to expand to other regions of the state. CarePortal provides the church a great opportunity to serve children and families right in their own communities.
- **Stewards of Children:** Training offered to churches anywhere in the state at no cost designed to assist in equipping the church to prevent child sexual abuse. Churches learn where the threats come from, and gain an awareness of how to prevent abuse, learn the 5 steps to keep children safe, and how to respond if abuse is suspected, disclosed, or discovered. We also offer to assist churches with policy reviews or development at no cost to them. This is a prevention focused ministry.
- **Supervised visitation ministry:** We can work with churches anywhere in the state to connect them with either Children's Division or private foster care agencies to gain opportunities to supervise visits for parents whose children are in state custody. MBCH provides the training and helps to build the connection to gain access to offer this ministry. The church gains the valuable time with these families for relationships to form.
- **Design and Development of Foster Care Ministries:** We offer any church our services to consult with them on designing and developing a foster care ministry that includes wrap-around support from people in their church so that the foster families that serve have the social/relational support they need to be successful with foster care.

- **Women's Ministry:** Wanda Shellenbarger offers a variety of free resources, training, and equipping events to support local church women's ministries. While there is a learning/discipling component to all of our women's ministry resources and events, they also provide an opportunity for women to learn about the ministries of MBCH and the opportunities that we offer to churches through church engagement to get equipped to serve children and families in crisis right in their local neighborhoods.

- **Parent Support Volunteer Ministry:** We offer training to equip volunteers to come alongside parents who are working towards reunification with their children who are in state custody. The volunteers have the opportunity to build a relationship and be a coach/mentor to the families they serve as they work toward seeing their family restored. We have piloted this with FBC Macon with some great success, and plans are underway for expansion in Macon. We hope to replicate this ministry in other parts of the state perhaps beginning in the later part of 2024.

David Burch
Church Engagement Strategist



To learn about a way MBCH can partner with your church visit:
www.mbch.org/church-engagement



PROJECT UPDATE

Russell Martin Youth Drop-In Center, Bridgeton, MO

Thanks to the hard work and prayers of so many, the Martin Youth Drop-In Center of the Lowe-Frillman Campus officially opened on March 26th! A blessing service was held the day before to pray for the young people who will access the Center. You can see from the before and after pictures of the amazing transformation of the space. Continue to pray for the youth, their families and the staff who will be involved in this ministry.

If you have questions or would like to learn more about volunteering, please contact Von Hulin at 314-739-6811, ext. 1368 or von.hulin@mbch.org .



Thank You to Parkway Baptist Church



A big thank you to the Impact Young Adult group of Parkway Baptist Church for assembling five cribs for our pregnant and parenting teens. The cribs were provided by the Jayson Tatum Foundation.

Staff Spotlight

Troy Burton Records Specialist

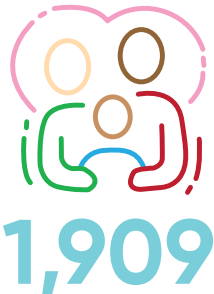
Troy has brought a lot of fun to the Bridgeton office in the last three months. He organized a reverse trick or treat with a decorating contest at Halloween, promoted a Thanksgiving event, organized a Christmas party, a campus "decorating day," and even a Christmas decorating contest with a sweets party to follow. All of these things took a lot of time and energy while continuing to complete his job. Troy has helped bring a stronger staff connection, engagement and joy to our agency. We appreciate all he has done and look forward to the fun of 2024!



We Love Our Volunteers!

Lives Changed in 2023

through MBCH Children & Family Ministries and The LIGHT House



Children, youth and families served



Decisions for Christ by children and youth in Residential programs

**Thank you for
your prayer
and support in
2023!**

2023 Statistical Report

Counseling Center

52 Agency-Based Clients



34 Community-Based Clients



336

Foster/Adoptive/Relative/Kinship
Homes Maintained



12

Youth served in
Therapeutic Group Homes



45

Clients served
through Transitional Living



337

Mothers and Babies
served through
Pregnancy Services



138

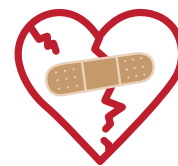
Youth served in
Treatment Family Care

551

Youth served in
Family Foster Care

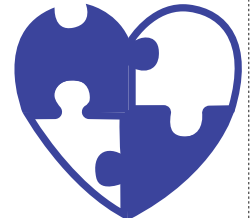
10

Clients served
through Anti-
Trafficking Services



96

Home Studies
Conducted



17

Clients served
through
Developmentally
Disabled Services

Church Engagement



88

Churches served
by Church Engagement

345

Trained in
Stewards of Children



46

Other Groups served
by Church Engagement



1,715

Youth and families
served



75

New Families Licensed
29 Foster Families &
46 Relative Families



160

"Forever Families"
were found for children.



2023 Statistical Report

20

Maternity Home
Clients

10 Mothers,
4 Toddlers & 6 Infants



29,552

Packages of diapers and
other baby items distributed

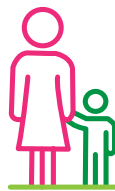


152

Outreach
Participants

274.75

Volunteer Hours



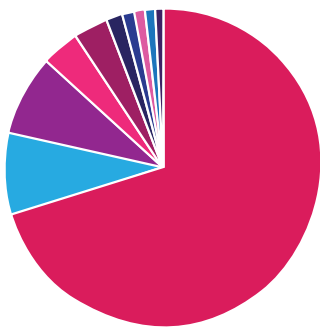
263

Classes
Offered



27

Home Based
Services

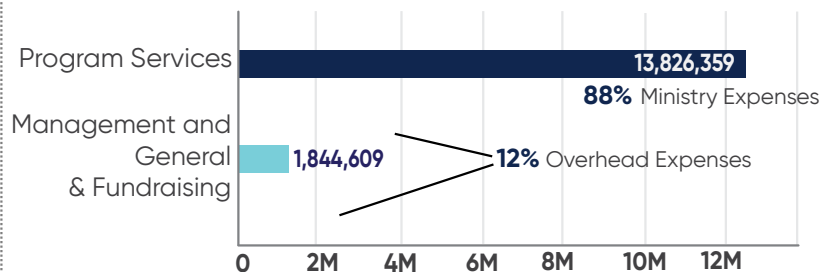


2023 Total Revenue/Support
\$19,019,406

- Program Services: **\$9,870,285**
- Contributions: **\$3,993,526**
- Endowment/Investments: **\$2,374,978**
- Cooperative Program: **\$708,411**
- Gifts from Churches: **\$612,827**
- Bequests/Wills: **\$541,589**
- Other Revenue: **\$483,788**
- Birthday Offering: **\$231,329**
- Missouri Missions Offering: **\$130,926**
- Special Events: **\$71,747**

MBCH Family of Corporations 2023 Financial Report

2023 Expenses



Total Expenses: **\$15,670,968**

Revenue Less Expenses: **\$3,348,438***

Unrealized Gains on Investments: **\$1,682,108**

*Does not include Unrealized Gains on Investments

**MISSOURI BAPTIST
CHILDREN'S HOME**



STRAWBERRY FESTIVAL

2024

Quilt Auction & Craft Festival
June 8, 2024
9:00 am - 2 pm

First Baptist Church, Arnold
2012 Missouri State Rd, Arnold, MO

Handmade Quilt & Craft Auction

• 150+ items donated from around that state

Quilt & Craft donation deadline: May 17

Craft Vendors

- Bath products. • unique gift items • Soaps • wreaths
- Ceramics • Jewelry • Watercolor prints • much more!

Fun Strawberry Foods!



MBCH Special Events
(417) 410-9033
www.mbch.org

All proceeds go to support the ministry of MBCH. MBCH provides Christ-centered foster care, pregnancy resources, anti-trafficking services and church resources.

MBCH News

A Night of Worship



The youth in Swadley house were invited to participate in a sisterhood event on a Friday evening in February. The girls were provided with dinner and games before the event. They enjoyed an evening full of worship and heard a powerful message centered around encouraging each other in their faith. The girls were able to witness firsthand how truly

loved they were by the Creator of the Universe. We ended the evening with one young lady rededicating her life to Christ and another being completely healed by intense knee pain that had been hurting her all evening. Oh, and let's not forget the epic dance party and bracelet making party following the service.

Preparing for a Bright Future

The youth of Hutchens campus have been hard at work and ready to shine to future employers! All youth in our Therapeutic Group Homes and Transitional Living Programs participate in weekly life skills classes to help equip them for their future. Hutchens youth wrapped up a 9-part series on job readiness. This series covered a wide variety of topics, empowering youth as some began their own employment search. Youth learned how to dress for a job interview, answer common interview questions, and learn soft skills needed to keep a job. Our Residential Supervisor utilized a variety of techniques to engage clients to actively participate in classes, such as, games of jeopardy, role playing, word searches, using Indeed, and practicing all the skills they learned in their own mock interviews with staff. Clients gained helpful feedback after their mock interviews and continued to practice the tools and skills they had learned. Stay tuned for updates for our next series on financial literacy!



Night to Shine



The Intellectually & Developmentally Disabled Program was able to enjoy a Night To Shine earlier this year!

A special thank you to Fellowship Greenwood for the pre-party food and karaoke. Also a big thanks to Z Hair Academy for getting everyone dolled up for prom with special hairdos, make-up and hair/beard trims. It was a fun filled night!



Staff Spotlight



Dawn Baker

**Residential Specialist
Byrne Campus**

Dawn is a hard worker and goes above and beyond for her team, but especially for the clients she serves. She is kind, caring, and considerate and to her, this is not just a job. This is an opportunity to minister and mentor to youth that come from trafficking. She truly cares for her clients and the role she plays in guiding them toward being a successful adult. Dawn works hard to help teach the clients skills, such as respect, professionalism, budgeting, social skills, and responsibility. She also makes sure the clients are well cared for – that their needs are being met and advocating for the clients when there is a need. Dawn shows clients love and respect, and helps them learn how to trust others. These are key components that many clients struggle with and need a person that truly cares to help them be open to receiving the help they need.

Dawn has a great “team” mentality. She is professional and maintains good relationships with her coworkers. She offers help to others and is happy to help in any way she can. She always has a smile on her face! It is second nature to her to sacrifice her own safety to protect the clients she serves. Dawn is passionate about what she does and cares deeply for those she serves.

Honorariums & Memorials

Honorariums

Christi Stewart Austin by Anita Eddy (Springfield)
Ambrose Blair by Michael Streicher (Ozark)
Grandchildren and Great Grandchildren by Jim Williamson (Seneca)
Arthur Griffin by Friendship Baptist Church (Mexico)
Raymond "Ray" Eugene Johnson by Anita Eddy (Springfield)
Pastor Paul McKim by Timothy Mattson (Maryville)
G. D. Milbery by Harry Milberg (Saint Louis)
Missouri Baptist Foundation (Jefferson City)
My Sunday School Teacher and Husband by Betty Carlson (Willow Springs)
Lola Neudling by Jo Ridenhour (Wildwood)
Hutton & Ceinna Saulsbury by Phyllis Saulsbury (Kansas City)
Wayne Taylor by Ryan Taylor (Falmouth, ME)
Wayne & Donna Kay Taylor by Ryan Taylor (Falmouth, ME)
Merle & Evonne Trelow by Martha Brunkhorst (Concordia)

Memorials

Stephon Abron by Grant Hendrickson (Saint Charles)
Curtis Larry Amen by Carolyn Amen (Dardenne Prairie); Charles Amen (St Louis); Sharon Bopp (Chesterfield); Keith Cole (St. Louis); Paul Conrad (Saint Louis); Joy Class at Waypoint Church (Saint Charles); Vivian Littrell (Macon); Debra Peppers (Eustis, FL)
Ruby Andrews by Marguerite Brown (Macon)
David E Arnold by David Arnold (Lebanon)
Robert & Mary Barton by Charles Brown (Louisiana); Charles Brown (Louisiana)
Virginia Beavers by Ginny Raney (Mexico)
Marlene A Beckel by Marshall Shope (Duncansville, PA); Buddy Hann (Duncansville, PA); The Thomas Family (Hollidaysburg, PA); Carol Beckel (Saint Louis); Peggy Gray (Ellisville); Jane Hemer (St Louis); Hofman Health Management Group (Chesterfield); Daniel Knouse (Altoona, PA); The Zahner Family (Perryville)
Roger Bickel by James Eshbaugh (Hazelwood)
Ken & Emma Brown by Charles Brown (Louisiana)
Kit & Brian Carson by Shelda Carson (Saint Joseph)
Janet Chester by Bob Able (Stillwater, OK); Beth Drake (Seneca); Michael Rawlins (Wyandotte, OK); Swars Prairie Baptist (Seneca)
Lucille Cogdill by Garnall Cogdill (Strafford)
Dorothy Crim by Betty Moritz (Quincy, IL); Kelly Wilson (Quincy, IL)
Joy Crook by Robert Alexander (Archie);

Bill Barred (Salem); Joe Crook (Archie); Janet Dam (Overland Park, KS); Michael Ford (Harrisonville)
Ivan Dameron by John Dameron (Platte Woods)
Brian Dehm by Clarence McKinney Jefferson (City); George Dehn Marshall
Rev Mark Deshon by Russell Martin (Saint Charles)
Mr James "Jim" Draper by Second Baptist (Poplar Bluff)
Roger Eddy by Anita Eddy (Springfield)
Bill & Charlene Forbis by Bob Verdi (Prosper, TX)
Robbie Fricke by Kenneth Kluth (Arnold); William Repperger (Saint Louis)
Wallace T Glanville by Carolyn Glanville (Shawnee, KS)
Mary Graiton by Beverly Darnell (Nevada)
Oscar "Wayne" Greenwood by Richard Akins (Manhattan, KS); Michael Filla (Saint Albans); Vickie Greenwood (Manhattan, KS); David Hoover (Manhattan, KS); Julie Kiser (Battlefield); Patricia Nelson (Manhattan, KS); Robert Ridley (Manhattan, KS); Michael Sexton (Manhattan, KS); Amy Tittle (Raytown); Stan Weir (Manhattan, KS); John Wright (Manhattan, KS); George Wyatt (Manhattan, KS); Leonard Finney (Manhattan, KS)
Wayon Greenwood by Charles Cooper (Marshall)
Arthur Griffin by Wayne Benoit (Centralia); Gerald Cebula (Omaha, NE); Malcolm Davis (Centralia); Loretta Feldkamp (Maywood); Sue Griffin (Maryville); Donald Griffin (Prairie Village, KS); Jeffrey Griffin (Thompson); Julie Ives (Centralia); R. H. Kinkead (Centralia); Michael Oakes (Mexico); Gerry Rathbun (Maywood); Jeanie Shumate (Ewing); Harold Smith (Centralia)
Travis D Hanna by Carolyn Hanna (Saint Louis)
Tyler Yvette Hayes by Millicent Buchanan (Orlando, FL); Nicole Tami (Albuquerque, NM)
Moneake Heitmeyer by Pleasant Green Baptist (Madison)
Pat Hendrickson by Grant Hendrickson (Saint Charles)
Bob Henslu by William Ronan (Saint Charles)
Ardith Henson by First Baptist (Farmington)
Ms. Karen Hogue by Second Baptist (Poplar Bluff)
Donald Hudson by Roy Nordwald (Mexico); Ginny Raney (Mexico)
Harold Jones by Larry Daggett (Vicksburg, MS); James Gilbert (Joplin); Rosemary Newman (Joplin); LHS Alumni Association (Lilbourn)
Skylar Jones by David Arnold (Lebanon)
Rev Robert Kenison by William E Mayberry (Overland Park, KS)
Mr. John Kennon by Second Baptist (Poplar Bluff)
Janice S Kirtlink by Eugene Kirtlink (Perry)

Carolyn Koffman by Acropolis Investment Management, LLC (Chesterfield); Anonymous; Carl Briscoe (Moberly); Richard Brockman Columbia); Melissa Burton (Sedalia); Jeanie Byland (Columbia); Don Cable (Sedalia); Glenn Cairer (Sedalia); Betty Cannon (Nashville, TN); John Cochran (Moberly); Stanley Cox (Sedalia); David Curry (Sedalia); Jack Ebert (Aurora); Howard Fleming (Charlotte, NC); Howard Fleming (Charlotte, NC); Sandra Harper (Germantown, TN); W. S. Harris (Armstrong); Kelley Head (Moberly); James Jones (Crane); Joseph Knaebel (Moberly); Michael Koffman (Lake St Louis); Doris Koffman (Sedalia); Russell Martin (Saint Charles); Randall McGinnis (Rogersville); James McIntyre (Springfield); Leanna McLaughlin (Springfield); Mary Mead (Moberly); Wyman Miller (Springfield); Chris Oelschlaeger (Springfield,); Tracy Orlandi (Nixa); Randy Prewitt (Huntsville); Theodore Sander (Moberly); Mary Stansberry (Moberly); Dan Wilcox (Moberly); Robert Wilcox (Moberly); Charles Winkler (Moberly); Bill Wise (Springfield)
Carolyn J & John H Koffman by Jeannette Wager (Schwenksville, PA)
Jim & May Lambeth by Thomas Beckham (Potosi)
Barbara Lange by William Lange (Saint Louis)
L.B, David, and Rodney by Lewis Powers (Saint Louis)
J. Kevin Lewellen by David Robinson (Bowling Green); Charles Roethlisberger (Elsberry)
Lanny Lloyd by Macedonia Baptist (Springfield)
Dale Lueck by Audra Lueck (Odessa)
Mary Maness by Don Boll (Oronogo); Daniel Hausman (St Joseph)
Chester "Chet" Manley by David Childers (Springfield); Emrie Family (Fenton); Jennifer Fine (Wildwood); Paul Hoback (Lenexa, KS); Judith Hoselton (Linneus); J B Rinehart (Overland Park, KS); Cecil Shannon (Overland Park, KS)
Gary Manwarren by Nicholas Manwarren (Purdy)
Eva Marie Fitz by Martha Fitz (St. Louis)
Thomas Martin by Margaret Martin (Saint Joseph)
MBCH by Terrill Bohon (Independence); Richard Gieser (Wheaton, IL); Rebecca Grogan (Gladstone); Lee Pulse (Lees Summit)
Elizabeth "Betty" Ann McNabb by Agnes Lamer (OFallon); Rosalie Carden (Gainesville, GA)
Lucy Miller by Kevin Miller (Farmington)
Lela F (Enos) Minnick by Charles Chapman (Independence); David McDonald (Cranford, NJ); William Willis (Gardner, KS); Carl Davis (Greenwood); Timothy Enos (Adrian); Kim Fritchie (Lee's Summit); Vickie Jones (Golden, CO); Mike Lefevre (Butler); Darryl Nelson

(Lee's Summit); Kelly McDonald (Springfield); Jacquelyn Boozer (Bowie, MD); Lonnie Bruns (Lee's Summit); Donna Dannenmaier (Weldon Spring); Susan De Courcy (Shawnee, KS); Rocky Figurilli (Frederick, CO); Walter Jones (Lees Summit); Linda Perkins (Lawrence, KS); Harley Shepardson (Dallas, TX); John Steffensmeier (Kansas City); Shirley Wyman (Clovis, NM)

Ruby Morrow by James Morrow (Eldon)

Mrs Betty Nelson by Harvey Heidemann (Saint Charles)

Milford R Olson by Denise Kershner (Adrian); Jim Kershner (Adrian); Gary Lane (Brookfield); Mark McClamroch (Bucklin); Dan Milligan (Adrian); Rick Russell (Brookfield); Jack Russell (Marshall); Patricia Wood (Meadville)

Joyce Palmer by First Baptist (Sikeston)

Martha Philgreen by Jerre Powers (Leawood, KS)

Rev. Mark Phillips by Harvey Faircloth (Park Hills)

Harold Ponder by Tim Sullenger (Lilbourn)

Grace Maxine Foster Queen by Bobbi Still (Ozark)

Mackey Foster Queen by David Shaw (Springfield); Tim Whetstine (Cabool); Barton Brown (Fayetteville, AR); Steven Dust (Gravois Mills); Jenny Gilreath (Fayetteville, AR); Drew Honeycutt (Mountain Grove)

Elmer & Elsie Riley by Waunita Moore (Independence)

Mr Denver Robinett by Second Baptist (Poplar Bluff)

Caleb Robinson by James Robinson (Traverse City, MI)

Rev. Greg Robinson by Harvey Faircloth (Park Hills)

Larry Schulte by David Robinson (Bowling Green); Charles Roethlisberger (Elsberry)

James M Scoggins by Caron Mainer (Saint Peters)

Jim Scoggins & Jerry Scoggins by Marilyn Scoggins (Saint Peters)

John "Jack" Richard Sladkey by Buddy Frye (Olathe, KS); Stephen Hamilton (Overland Park, KS); James Ingram (Lenexa, KS); Carole McKnight (Overland Park, KS); Lois Olson (Shawnee, KS); Daniel Sappenfield (Overland Park, KS); Don Wampler (Overland Park, KS); Jim Wilson (Overland Park, KS)

John Blevins by Amanda Collins (Webb City); Glenn Coltharp (Asbury); Scott Erisman (Joplin); Richard Lyons (Asbury); Emily Randol (Overland Park, KS); Simpson Funeral Home (Webb City); Jack Stewart (Pacific); Chuck Vetter (McPherson, KS); Joseph Voiland (Yorkville, IL); Michael Bettis (Overland Park, KS); Steven Dahl (Naperville, IL); Kevin Gotberg (Grandville, MI); Gary Heise (Leawood, KS); Susan Hollinger (Prairie Village, KS); Karen Mason (Crystal Lake, IL); Leslie Wollnik (Overland Park, KS)

Dorothy Stapp by Steven Mitchem (Springfield)

Karen Stephens by Macedonia Baptist (Springfield)

Warren Stephens by Barbara Stephens (Polo)

Barbara Stiles by Mark Tong Indian (Rocks Beach, FL)

Emajeon Swindle by Joe Thomason (Weldon Spring)

Catherine Taber by Second Baptist (Poplar Bluff)

Edna Pauline Taylor by Macedonia Baptist (Springfield)

Venita Todd by First Baptist (Sikeston)

Vivi and Deight by Claudia Day (Charlotte, NC)

Buell Weathers by Second Baptist Church (Sikeston)

Rev. Jason Welker by Harvey Faircloth (Park Hills)

Peggy White by Bernard White (Nixa)

Betty Jane Wilkinson by Phil Ball (Saint Charles); Robert Hale (Washington); Prosper Fager (DeSoto, IL); Randal Hein (Bridgeton); Chris York (Bridgeton)

Timothy Charles Williams by Beverly Mattli (Fayette)

Rev. Kevin Willis by Harvey Faircloth (Park Hills)

Daniel Wills by First Baptist (Farmington)

Brad Wilson by First Baptist (Sikeston)

Kenny Yates by First Baptist (Sikeston)

**Honorarium and memorials received
November 1, 2023 - February 29, 2024.**

mbch CALENDAR OF EVENTS

Upcoming Events

Strawberry Festival

June 8, 2024 (second Saturday)

First Baptist Church
Arnold, MO

Contact MBCH Special Events:
specialevents@mbch.org
www.mbch.org/strawberry-festival/
417.410.9033



Missouri Quilt Festival

September 28, 2024

Church of the Four Corners
Kansas City, MO

For more information follow on Facebook:
"Missouri Quilt Festival"
816.233.2504
info.moquiltfest.sjba@gmail.com
www.mbch.org/events



Ozark Berry Festival

July 20, 2024

Macedonia Baptist Church
Springfield, MO

For more information:
www.macedoniabc.com
www.mbch.org/events



www.mbch.org/events

Women's Ministry Event

Truth for Girls

August 9-10, 2024

Friday, 9 am - 4:30 pm;
Saturday 9 am-3 pm

Cost: \$45 per person (includes lunch on Saturday)
Hotel: \$92/room; cutoff for rate is 7/9/24
Register: www.mbch.org/events

For more information:
www.mbch.org/events
wanda.shellenbarger@mbch.org
417.529.0724



The event will be held at AmericInn by Wyndham Hotel and Conference Center at 275 Tanger Blvd in Branson, MO. Call 417.334.8404 to reserve a room and be sure to specify which event you are attending to receive the special rate.

www.mbch.org 15



Missouri Baptist Children's Home

11300 St. Charles Rock Road

Bridgeton, MO 63044-2793

THE MESSENGER

Missouri Baptist Children's Home



On May 7, join MBCH and say, "I Care" for the vulnerable through special prayer and support!

mbch.org/i-care-day/

In this issue:

- **Final Letter from President Martin**
- **Meet Dr. Juston Gates**
- **2023 Annual Report**
- **MBCH News**

A Cooperative Program supported entity of the Missouri Baptist Convention



May 2024