

HOW CAN YOU...

GetInvolved

There are many ways for you to get involved and support MBCH other than the traditional ways of direct monetary gifts. Many choose to use their talents and connections in additional ways through Mission Projects, Church Engagement, volunteering, prayer, etc. Check out the ways you can connect and join the ministry efforts of MBCH and help make children, youth and families stronger by providing hope, healing, and restoration.



Mission Projects

Mission projects are not limited to any one type of group and we provide a variety of ideas. Visit www.mbch.org/missionprojects for a booklet.



Birthday Offering

Celebrate your birthday by donating to MBCH and being part of the Birthday Mug Club. For information visit: mbch.org/birthday-offering



Church Engagement

For Stewards of Children training, Foster/Adopt Ministry resources, CarePortal, and Women's Ministry visit mbch.org/church-engagement



Volunteer

MBCH has many volunteer opportunities for you or a church group. Contact Von Hulin at von.hulin@mbch.org.



Campus Needs & Prayer

Please join us in praying for the many needs of our campuses and clients. Visit: mbch.org/campus-needs-and-prayer



VBS Toolkit

MBCH offers a VBS Toolkit with mission offering initiatives that also teach children about mission opportunities in their community. Visit mbch.org/vbs



For additional ideas visit:
www.mbch.org/get-involved



give

800.264.6224

www.mbch.org/give

If you're interested in information about any of the items listed above, please contact your regional representative.

Ben King, MSCM, CGPA
West/Northwest Region
816.472.9072
ben.king@mbch.org

Kenny Vawter, CPGA
Southeast Region
573.241.1113
kenny.vawter@mbch.org

David McMullin, CGPA
East/Northeast Region
573.259.3971
david.mcmullin@mbch.org

Joe Nogalski, MDIV, CPGA
Southwest Region
816.317.4430
joe.nogalski@mbch.org





President's

Spring 2025

As Spring has dawned, we enter the season of post-winter new growth, attempting to leave behind the inches of snow that covered our administrative campus in Bridgeton throughout January and February, opting for the budding greenness and warming temperatures. However, to grow and experience freshness as an entity, we must often reflect over the past year in order to see clearly where we might chart our path ahead.

As President of MBCH, April a year ago was when it all began in relation to my job responsibilities. My first actions were attending the Trustee Board meetings in April of 2024, while also preaching in my first church setting as the "new" President of MBCH at Parkway Baptist Church in St. Louis. Then, in the final week of that month, I started unpacking boxes in my temporary office space.

Having a hard time believing that a year has passed since those moments, I am realizing what a whirlwind of activity it has been. I have had the great privilege of preaching and presenting in nearly thirty-five churches and Associational meetings across our state, while leading the Forged Men's Retreat sponsored by the Bethel Baptist Association and Calvary Baptist Church in Hannibal, and revival services at FBC Mansfield. Various other speaking opportunities arose through events like the Sending Lab St. Louis, a church planting effort of the NAMB Send Network and our own MBC Annual Meeting, where I was blessed to share with the messengers of the great churches that comprise our Convention.

Yet, that doesn't scratch the surface of the ministry efforts taking place through the labor of the nearly 240 employees that make up MBCH. Within the pages of this issue, you will find a colorful impact summary sheet of the calendar year 2024. I do not want to replicate those ministry impact numbers here, but I do desire to highlight some key accomplishments of our team.

For instance, between the combined efforts of our Bridgeton Campus and our affiliate, The LIGHT House in Kansas City, we provided in-home pregnancy services to over 400 clients, while also serving 20 clients residentially with our maternity home care. Our intellectual developmental disabilities services team provided residential care to 31 clients this past year on two campuses. Our family foster care staff contracted care on behalf of the state of Missouri Children's Division to 834 clients/families, while our counseling center hosted 86 clients for service. The MBCH church engagement staff provided churches service to 831 individuals, while our family resource development staff maintained 451 foster care homes.

What's hard to imagine is that this data doesn't even cover all of our ministries. I didn't mention the impact of our anti-trafficking services staff, our transitional living group homes and scattered sites program,

**... we are first
and foremost
about Kingdom
business.**



Update

nor our therapeutic group homes and treatment family care teams. Yet all have been highly successful in accomplishing our mission this past year, especially as it relates to having an “eternal” impact on our clients. The most exciting news that arises from the efforts of our team is that there were 11 professions of faith by our clients in 2024, with 8 baptisms arising from those professions. Likewise, we accumulated 223 permanencies (permanent homes for clients) through reunification and adoption.

All of those ministry outcomes are incredible, however, we cannot spend time solely reflecting, we must focus our efforts on advancing, and that’s exactly what MBCH is doing. In late 2024, we launched a new ministry in the Kansas City region in contract partnership with Lutheran Family and Children’s Services to provide crisis intervention care to homes wherein children were at a high risk of potentially entering the system with Children’s Division (CD). We are replicating a similar, but self-funded ministry on our Bridgeton Campus in conjunction with CD early this spring. Additionally, through our affiliate, The LIGHT House, we have launched a Supportive Housing and Financial Education Services program to aid those former clients of our maternity home program that have not yet reached full independence.

So, clearly, we are not “resting on our laurels” in any sense of the phrase, but instead, are constantly evaluating how we can expand and partner in Kingdom work. It is the Kingdom emphasis that has caused us to “partner” with the leadership of City Christian Academy (CCA) in St. Louis and the Send Network leadership in our state. No, MBCH has no plans of opening our own educational institution, but when we see the Kingdom effectiveness of CCA and the church planting efforts of Send Network, we contribute to endowment funding and provide items that support church leaders who are leading their own churches to plant others. Why? Because MBCH is not solely in the child welfare business, we are first and foremost about Kingdom business.

With that said, that would be my closing challenge to those constituents who will read this article. Be about Kingdom business! Yes, we all have our own areas wherein God has gifted and assigned us to be about his work, yet, at times, we can become too narrowly focused. Let us not forget that we are about the same business, i.e., propagating the Gospel message in any way and format afforded to us. Let us press forward together in that effort!

Until next time,

Dr. Juston Gates, DMin
President, MBCH

Request **A Speaker**

If your church, organization, or group would like to have someone from MBCH or The LIGHT House speak please let us know!

MBCH and The LIGHT House have Regional Representatives and Church Engagement Specialists traveling throughout the state to share about our ministry, ways you can engage, and bolster your ministry to children, youth, and families within your community.

Contact:

info@mbch.org

800.264.6224

www.mbch.org/contact

Support **MBCH**

Get **Involved**



There are many ways you can support MBCH and get involved in the ministry where you

live. To learn more visit mbch.org/get-involved

Join the **MBCH Team**



If you or someone you know is interested in joining the ministry of MBCH by being part of

the MBCH team contact HR or visit mbch.org/employment to learn more.



LOWE-FRILLMAN CAMPUS Barnes Building Renovation

After an extensive update, on January 15, 2025, the Barnes building on the Lowe-Frillman campus was re-opened to allow the Family Foster Care assistant director, supervisors, case managers and aids to all be officed in one location. The update included new windows, flooring, paint and furniture. Features of this new space include desk space for each employee, two visitation rooms and a small conference room. The visitation space will accommodate meetings and visitations for clients receiving services. They are also working to add additional space in the basement that will allow a larger meeting space for all involved in a family's case to be present at one time-



the CASA volunteer, the Juvenile Officer, family members, etc. With the new look clients will be welcomed to a modern, warm environment.

MBCH was awarded an expanded contract in 2024 which has increased case management size from 72 to 241. This expansion allows for a total of 26 employees in Family Foster Care. At the dedication Leah Capps, MBCH-CFM Board Chair, emphasized, *"It has been amazing to watch our staff come together, after being awarded this large contract, to make the renovation of this space become a reality. Our staff works hard to meet the needs of all clients. This new space will be a warm welcome to the families that we serve."*

Prior to the update, those working in this department have been spread throughout the campus and have had to share desk space.

When asked about what this new space means for her staff, Tiffany Crumer, Assistant Vice President - East, MBCH-CFM said, *"I am excited that our workers will no longer have to desk share. They will have a space to call their own. We will all be together in one area to see one another and not be spread out, this builds a better team to do this wonderful work."*



Case management for children and youth in state custody is a challenging job with this new space staff are provided a better working environment and communicates their value to MBCH and their work in accomplishing the mission of the ministry.



Nathan Young

Residential Specialist
Mt. Vernon

There are staff members you wish you could clone, individuals who consistently bring their best. Nathan is one such employee. Having been with MBCH-CFM for just over four years, he has navigated some incredibly challenging situations at the Hutchens Campus. Yet, his dedication to the ministry has remained unwavering, even on the most difficult days. He's the kind of person who prioritizes thorough and accurate work. Nathan has significantly impacted the lives of numerous young men, playing a crucial role in their transition to adulthood. He has also fostered strong connections with the church that now serves as a home for our clients at Hutchens Campus, even participating on stage with Dr. Gates and other staff to highlight the positive developments at the campus during the church's annual "MBCH Day." His exceptional ability to advocate for client needs allows him to build lasting relationships. Nathan is now preparing to transition from Hutchens Campus to the Springfield Office, where he will take on a new role (no hard feelings, Lisa and Marla). In this position, he will utilize the skills he developed during his time in TLP to support young men entering our TLSSA program.

Stronger Family **Services**

In spring, MBCH-Children and Family Ministries launched the Stronger Family Services (SFS) program designed to provide time-limited support (up to 90 days) and services to children and families (in the St. Louis area) that are experiencing factors or situations that put them at risk for separation. Services provided will be uniquely designed with each individual family to assist them in the challenging circumstances they are facing and will assist them in gaining the knowledge, skills, and resources that allow them to remain safely together as a family. SFS will utilize Trust Based Relational Intervention (TBRI), an evidence-based trauma-informed intervention, that is designed to meet the complex needs of vulnerable children. TBRI® uses Empowering Principles to address physical needs, Connecting Principles for attachment needs, and Correcting Principles to disarm fear-based behaviors. While the intervention is based on years of attachment, sensory processing, and neuroscience research, the heartbeat of TBRI® is connection. SFS staff will be trained to intentionally make connections with the children and families they are serving, while also facilitating stronger connections within the family. SFS will also have a focus on connecting children and families to natural helpers in the community and thereby building the social and relational capital of families.

A range of preventive services, from further upstream family preservation and stabilization to more intensive family preservation services may be provided by the SFS program. Believing that the best place for a child to grow up is in a family, our practice model is intended to effectively promote child and family permanency and well-being. Beginning with the end, or outcomes, in mind, our practice model design intentionally brings together the trauma-informed model of Trust Based Relational Intervention and a solid network of local natural helpers from the local faith community that help to build the social relational capital of the children and families served.



To learn more about Preventative Services offered by MBCH-CFM visit mbch.org/preventative-services

Employee of the Year

Traci Watson
PQI Coordinator
Lowe-Frillman Campus



Traci Watson, PQI Coordinator at the Lowe-Frillman campus in Bridgeton was selected as MBCH Employee of the Year for 2024! Traci's dedication to both her colleagues and the children, youth, and families we serve is truly commendable. Her consistent helpfulness and unwavering commitment to improving service quality make her an invaluable asset to our team.

Traci has helped over the last year to improve processes at the Counseling Center and for therapists. She has been instrumental in assisting the implementation of a Treatment Plan in CSWIS that is specific to the Counseling Center. Traci, You are appreciated and thank you for all your efforts!

We Love Our Volunteers!



A special group of ladies from First Baptist Arnold recently volunteered their Saturday morning at the Campus Store on the Bridgeton Campus. The ladies were feverishly cleaning, sorting and organizing- it was amazing! Thank you ladies for your hard work.



2T/3T pull ups, 3T/4T pull ups and 4T/5T pull ups. Baby wipes are also appreciated.

If you are interested in volunteering please contact Von Hulin at 800.264.6224 or 314.739.6811 ext. 1368 or von.hulin@mbch.org to explore how you can get involved, in-person opportunities vary around the state.

First Baptist St. Charles blessed us with a generous donation of diapers and wipes. We distribute diapers and wipes for several of our programs so we go through them quickly.

If you would like to hold a diaper drive for us, you can make arrangements to drop them off in Bridgeton (314.739.6811; 1 ask for Von) or the Byrne Campus in Peculiar (816.779.5173).

All sizes are needed but especially 4, 5, 6,

Staff Spotlight east



Kimberly Pisechko

**FRD Specialist
Bridgeton**

Congratulations Kimberly Pisechko, FRD Specialist at the Lowe-Frillman campus in Bridgeton for being selected as the Staff Spotlight for the east side of the state. Kimberly showed unwavering dedication and mercy on December 27th, 2024, when the Joplin office faced a significant challenge assisting a youth during a difficult transition to Every Child's Hope in St. Louis, involving police intervention. The youth left with only the clothes on his back, with belongings delayed for a week. In response to this urgent need, Kimberly demonstrated exceptional compassion. Upon request, she immediately gathered and delivered essential hygiene items, clothing, a hat, gloves, blanket, and other items of comfort within an hour. This swift action provided crucial support and relief during a stressful time, embodying a spirit of grace.

Event Update Branson Stars 2025

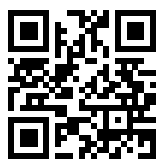
Thank you to all to attended, donated items, supported and prayed for the 2025 Branson Stars event at Clay Cooper Theatre!

It was a fantastic time despite the downpour! Over 400 people came out to watch a specially curated variety show of Branson's talented performers with the gifted and entertaining Clay Cooper as the event emcee. It is truly a unique show and event. Thank you to Clay and Tina Cooper for all of your hard work and large donation of your theatre for the event and working to book and schedule the talent.

We had over 80 silent auction items to bid on before and during intermission! Area businesses, churches and individuals donated all of the items and provided a fun variety of options for bidding and a little competitive fun between bidders.

The event was able to raise over \$35,000 which will all go directly to MBCH for the care and support of children, youth and families in Missouri! It would not be possible without the support of our churches and individuals donating items, buying tickets, bringing church groups, and giving sponsorships for the event.

Thank you to Clay and Tina Cooper, the team at Clay Cooper Theatre, and the MBCH Branson Stars committee for all of the donated time and effort to make this event a HUGE success! Through your efforts and gifts so many will be blessed!



Look for announcement at the mbch.org/branson-stars page for the 2026 date!

Thank you!

Home Visitation Services

MBCH-CFM is now offering Home Visitation Services in the Kansas City area. This program will support families with children ages birth to 5 years old to strengthen families in an effort to lessen the risk of child abuse and neglect. MBCH-CFM's preventative services are provided to help families thrive and stay together safely. This is an exciting service that is not state funded and is dependent on the generous gifts of MBCH supporters.

In addition to monetary gifts, the following items are in need to support families served in the program:

- Diapers and Pull ups of all sizes
- Diaper rash cream
- Onesies/sleepers (NB - 24 months)
- Developmental toys (infants - 5 years)
- Baby Wipes
- Baby bottles (new and no glass)
- Books for infants through preschool age
- Baby Wash/Shampoo
- Swaddle blankets
- Sensory toys

If you have questions or to make arrangements to mail or drop off the items, call the Byrne Campus in Peculiar 816.779.5173.

Missouri Baptist Children's Home

Wish List

Hygiene Items

Hand soap (*pump*)
 Products and supplies for African
 American hair:
 Edge control gel
 Edge control brush / comb
 military brushes
 wave cap / durag
 satin bonnets
 Tampons
 Lotion
 Women's deodorant
 Toothbrushes
 Toothpaste

Cleaning Items

Dryer sheets
 Dish soap
 Air freshener
 Lysol spray
 Clorox wipes

Household Items

Stove top pans
 Ziploc™ bags (*all sizes*)

Baby Items

Baby wash / shampoo
 Diaper cream
 Baby lotion
 Baby brushes
 Baby combs
 Baby nail kits
 Diapers (*size 4, 5, 6*)
 Girl pull ups (*size 2T/3T, 3T/4T,
 4T/5T*)
 Baby bath towels
 Crib sheets
 Swaddle blankets
 Baby bottles
 Crib mattresses
 Educational / developmental toys
 (*no stuffed animals please*)

Clothing

Sweatpants (*male and female- all
 sizes*)
 Leggings (*all sizes*)
 T-shirts (*male and female, short
 sleeved, all sizes*)
 Girls: (*0-3 months sleepers/
 clothing*)
 Girls clothes (*2T-6, 12-14*)
 Girls underwear (*2T/3T*)
 Women's underwear (*4/5*)
 Men's underwear (*Large*)
 Pajamas: (*boys/girls/men/women-
 all sizes*)

General

Work gloves
 Paintbrushes
 Trash/Yard 55 gallon waste cans

Back to School

Clorox™ wipes
 Kleenex™ (*boxes*)
 Contigo™ water bottles
 Sharpies™ (*black*)
 Dry erase markers (*4 pack*)
 Highlighters
 Prong-two pocket folders
 Washable markers
 Pens: (*black / blue / red*)
 Flash drives
 Wired ear buds
 Wired headphones
 Teen sized backpacks (*regular and
 clear*)
 Loose leaf paper (*wide rule and
 college rule*)
 Graph paper
 One subject spiral notebooks (*wide
 rule and college rule*)
 Pink erasers
 Composition books

To make arrangements for delivery to a specific campus, contact your Regional Representative (see page 11) or the campus:

MBCH Lowe-Frillman Campus
 11300 St. Charles Rock Road
 Bridgeton, MO 63044
 314.739.6811

MBCH Byrne Campus
 P.O. Box 429
 Peculiar, MO 64078
 816.779.5173

MBCH Hutchens Campus
 P. O. Box 568
 Mt. Vernon, MO 65712
 417.466.7844



New Client Assistance

Housing Stability and Financial Education (HSFE)

We have exciting news for The LIGHT House! The LIGHT House (LH) is now enrolling for the new Housing Support Financial Education (HSFE) assistance program! This program is designed to support LH clients in helping them create a financially stable household. This consists of them meeting weekly with a case manager and completing a financial literacy course, all while saving money to better their future. This course will help them cover their rent for up to 6 months, allowing them to focus on stabilizing their finances and paying off any outstanding debts.



Dorothy

THE LIGHT House Volunteer Appreciation

Dorothy Austin and Allison Stutterheim

April is volunteer appreciation month, and we want to highlight some long-term volunteers! The LIGHT House offers Outreach, a Tuesday evening program for families who need support during their pregnancy and parenting journey. While moms attend class, their children, ages 1-10 participate in our childcare program. During childcare, the children have a safe space to play, be silly, eat dinner, learn about God, and have positive interactions with others. For almost 3 years, Dorothy and Allison have faithfully volunteered their Tuesday evenings for the LIGHT House. We are so thankful for these 2 volunteers; without them we truly could not offer this program aspect!



Allison



VBS Toolkit

A guide for a successful missions focus at your VBS

mbch.org/vbs



event update MISSOURI QUILT FESTIVAL

Kortney Grovo

Missouri Quilt Festival Committee Chairman

I grew up going to the Apple Festival! (The original name of the Missouri Quilt Festival) My mom took me, and it was always a special event. I remember looking at all the quilts, my mom telling me about the amazing quilters, and hearing about it's our responsibility to help the Children's Home. When I was asked if I could help with the Missouri Quilt Festival – I was all in! The mission of the Children's Home aligns with the mission of our quilt shop. The Quilted Cow-Raymore exists to support our community by connecting, encouraging, and creating opportunities for obnoxious generosity! We are encouraged and inspired by the work of MBCH! We believe that our incredible quilting community can make a HUGE impact! This years event is going to be incredible!

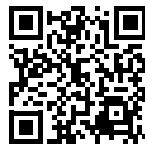
Kortney Grovo is the chairman of the Missouri Quilt Festival committee and owner of the Quilted Cow in Raymore. Kortney is continuing to carry the torch of supporting MBCH through the festival while also stoking the fire and love of quilt making in quilters in the KC area. Her love of quilts or love of MBCH comes through after just one conversation with her. Be sure to follow the MBCH Quilt Festival on Facebook, at www.facebook.com/moquiltfest.

Missouri Quilt Festival Event info:

September 27, 2025

9:00AM to 4:00PM

**The Quilted Cow Raymore Missouri
214 W. Walnut Street
Raymore, Mo 64083**



At 6:30PM on September 27th we will have a Facebook Live event on the MQF Facebook page. We will announce the top 3 Quilts and then Auction off the Quilts. We hope that you will join us for an exciting evening.



The LIGHT House Car Seat Program

The LIGHT House now has 5 staff members who are trained and certified as Child Passenger Safety Technicians. For 2025, The LIGHT House seeks to educate and train currently enrolled families to properly install a car seat! To meet this goal, we need many different types of car seats to fit children birth-elementary school years. If you would like to help, you can find our most requested car seats here: www.amazon.com/regist.../gl/guest-view/2MXFPIUDCX76E



Client Needs



- Hand soap
- Bath towels
- Ethnic shampoo/conditioner- Cantu brand
- Body wash for adults
- Coconut oil - unrefined
- Laundry detergent
- Razors
- Shaving cream
- Body lotion
- Hair combs
- Hair brush
- Hair accessories
- Wash cloths
- Tooth paste
- Tooth brush
- Deodorant

Walmart List



Amazon List



Lives Changed in 2024

through MBCH Children & Family Ministries and The LIGHT House



1,938

Children, youth and families served



19

Professions of Faith and Baptisms
by children and youth in
Residential programs

**Thank you for
your prayer and
support in 2024!**



2024 Statistical Report

54 Counseling Center
Agency-Based Clients



32 Counseling Center
Community-Based Clients



451

Foster/Adoptive/Relative/
Kinship Homes Maintained



12

Youth served in
Therapeutic Group Homes



37

Clients served through
Transitional Living



159

New Families Licensed
24 Foster Families &
135 Relative Families



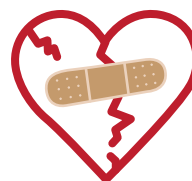
347

Mothers and Babies
served through
Pregnancy Services

834 Youth/Family served
in Family Foster Care



168 Youth served in
Treatment Family Care



12

Clients served through
Anti-Trafficking Services



31

Clients/Families served
through Intellectually
& Developmentally
Disabled Services



223

"Forever Families"
identified
for children.

Church Engagement



1,666

Youth and families
served



215

Churches served
by Church Engagement

245

Trained in
Stewards of Children



CarePortal®

25 Churches Added

88 Requests Met

258 Children Served

HOPE • HEALING • RESTORATION

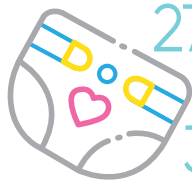
17

Maternity Home Clients

8 Mothers,
7 Toddlers & 2 Infants



Items Distributed



27 Carseats & Pack n Plays

1,018 Packages of Diapers

3,980 Other Items



146

Outreach Participants

363.7
Volunteer Hours



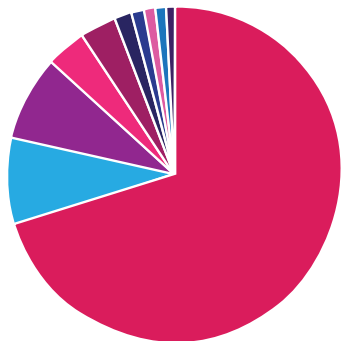
311

Classes Offered



109

Home Based Services

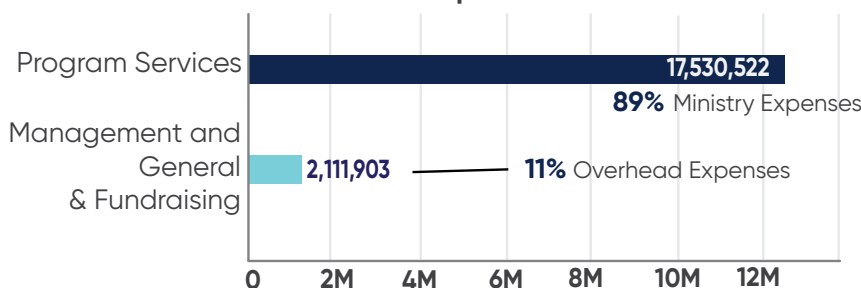


2024 Total Revenue/Support
\$22,578,872

- Program Services: \$13,574,030
- Contributions: \$4,062,566
- Endowment/Investments: \$2,521,515
- Cooperative Program: \$693,058
- Gifts from Churches: \$654,651
- Other Revenue: \$379,159
- Birthday Offering: \$226,984
- Bequests/Wills: \$194,731
- Special Events: \$139,995
- Missouri Missions Offering: \$132,183

MBCH Family of Corporations 2024 Financial Report

2024 Expenses



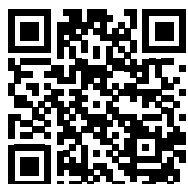
Total Expenses: **\$19,642,425**

"And God is able to bless you abundantly, so that in all things at all times, having all that you need, you will abound in every good work."
2 Corinthians 9:8

Through God's gracious provision we have been blessed to be able to invest our excess revenue in order to ensure that funding is available for future kingdom work, to the glory and praise of our Lord and Savior, Jesus Christ.

mbch CONTACT INFORMATION

MBCH Corporate
11300 St. Charles Rock Road
Bridgeton, MO 63044
800.264.6224
info@mbch.org



support mbch:
www.mbch.org/give

mbch REGIONAL REPRESENTATIVES

Ben King, MSCM, CGPA
West/Northwest Region
816.472.9072
ben.king@mbch.org

Joe Nogalski, MDIV, CPGA
Southwest Region
816.317.4430
joe.nogalski@mbch.org

David McMullin, CGPA
East/Northeast Region
573.259.3971
david.mcmullin@mbch.org

Kenny Vawter, CPGA
Southeast Region
573.241.1113
kenny.vawter@mbch.org

GETTING OUTSIDE THE FOUR WALLS OF THE CHURCH

Does your church look for ways to get outside the four walls of your building and connect with and love people in your community? Have you considered engaging with MBCH to get connected with children and families in crisis right in your neighborhood? MBCH partners with CarePortal to utilize technology to create connections that drive action for children and families in crisis.

Below is a short example of a local church engaging with MBCH and getting connected.

Recently a small church in St. Louis County engaged with MBCH and began to use CarePortal technology. The church was alerted to a need for a 13-year-old girl, and decided they could help. While meeting and serving the young lady, they also met her grandmother, with whom the girl had recently been placed as a relative placement. As they spoke with the grandmother, they found that she was very nervous to enroll her granddaughter in school, so the next day, the volunteers from the church were able to go with grandma and assist her in getting the child enrolled in school. At school, they learned that the girl would need the internet to do homework, and the grandmother did not have access to the internet, so the ladies put the grandmother in touch with a gentleman from their church who is a corporate employee with an internet provider. He is now working on getting Grandma set up with free internet so the child can do homework from home. The ladies also put grandma in touch with the local Boys & Girls Club for activities and even mentoring for her granddaughter. They also introduced her to the school district's food pantry to help with additional food costs incurred and to meet personal hygiene needs for the child. One of the volunteers said: "It takes all of us utilizing our resources to help them succeed and we are happy to do so."

When these church volunteers reached out to share all of this with our church engagement specialist, they said: "Today, we picked up Grandma to attend church with us. She says, "I loved being in church and know God will help sustain us". God gets all the glory for the doors that have been opened.

Praise God for passionate people in local churches who are eager to show the compassion and love of Jesus by getting outside the four walls of their church.

Consider what it might look like for your church to engage with MBCH and get connected through CarePortal. Sometimes "Connection" changes everything. For more information, reach out to David Burch, Church Engagement Strategist at david.burch@mbch.org.

To learn about how MBCH can partner with your church visit:
www.mbch.org/church-engagement



WHAT IS CAREPORTAL?

HOW IT WORKS

- 1

A child or family in need requires help from a child-serving professional
- 2

The child-serving professional vets and types needs into CarePortal
- 3

CarePortal alerts nearby churches and community members to needs
- 4

Churches and community members partner to ensure that the child and family is helped

CarePortal is a care-sharing technology platform that brings the needs of hurting children and families in your community to your attention. Caseworkers and other child serving professionals uncover needs. CarePortal makes local churches and community members aware, giving them a real-time opportunity to respond, driving action for kids and families in crisis.

MBCH is an Implementing Partner with CarePortal meaning that we are utilizing this amazing technology platform to make real time connections between children and families in crisis and local churches. There is no cost to your church, just an opportunity to serve. To learn more go to: www.careportal.org. If you are interested in bringing CarePortal to your area, contact: David Burch at david.burch@mbch.org.

Women's Ministry



Wanda Shellenbarger, Women's Ministry Specialist and Church Engagement Catalyst

It's certainly been a busy Spring with so many events and opportunities to share the gospel and ministries of MBCH with so many around the state.

We want to thank Pastor Coy Harlow for opening FBC Camden to us for our Spring Women's Ministry Training Clinic. We had a great time with a full house for a training clinic in the middle of the state.

It was exciting to be the main speaker for FBC Troy's Women's Conference in February. My regional leaders did a great job of bringing timely breakouts for the two day event. Our thanks and appreciation to Ellen Spires and her Women's Ministry team, Pastor Obie and the staff who worked so hard to bring such a great conference to the Troy area. They had numbers beyond their wildest imagination and were excited to see the Lord speaking into the hearts of so many women.



The True Girl Crazy Hair Tour for tweens and moms was a dream I've had for a while now and it was exciting to be able to partner together with South Haven Baptist Church in Springfield and the True Girl crew to bring the tour group into Springfield. Thank you to Pastor Ryan and Emily Wilson, Children's Ministry Director, for all of your hard work. It was a great event and there were 7 decisions made for the Lord. We're so grateful to the Lord for the life changing decisions that were made for Him.

Summer and fall look to be very busy times with many opportunities to share the Lord with women and girls in churches around the state. We look forward to seeing many of you over the next few months.

ResourceCenter

We are your resource center for women's and girl's Bible studies that are produced by Lifeway. If you prefer or need DVD's, please choose your study from Lifeway.com and contact me to see when DVD's might be available for you to use.

New Favorites that have arrived:

- **Luke in the Land** by Kristi McLelland AND a study for Teen Girl's.
- **Heaven** by Jennifer Rothschild
- **Live Free** by Elizabeth Woodson (A Study of Galatians)

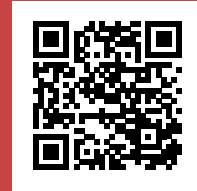
Please feel free to contact me if you are looking for a speaker for your conference or retreat or would like a Women's Ministry Training Clinic in your church or association.

Wanda Shellenbarger
wanda.shellenbarger@mbch.org
417.529.0724

LearnMore

For more information about women's ministry events visit www.mbch.org/womens-ministry-events or contact:

Wanda Shellenbarger
wanda.shellenbarger@mbch.org
417.529.0724



Are you called to volunteer?

Is your prayer group or Bible study wanting to do something for the kids and families of MBCH but you don't know what? Or you have a couple hours a week that you would like to donate to a life-changing organization but you're not really sure what might be a good fit for you?

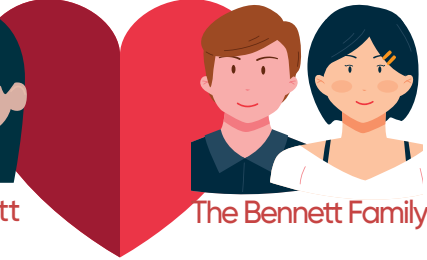
Volunteering at MBCH can look different for everyone - whether it is a group or individual; or at a campus or where you are located.

A few ideas to consider:

- Yard work
- Maintenance or painting
- Clerical work
- Cleaning, sorting and organizing donations
- Tutoring
- Parties for residents
- Holding a baby shower for MBCH
- Host an event/gathering with an admission fee of items from our Wish List
- Prayers

If you or your group would like to explore volunteer ideas, contact to Von Hulin at von.hulin@mbch.org or 314-739-6811, ext. 1368.

love your NEIGHBOR



\$100 gave



\$50 gave



\$20 gave



\$250 gave



\$70 gave



800.264.6224 • www.mbch.org/neighbor



BE hope
healing
restoration

Jesus asked,

"Which of these do YOU think was a neighbor to the man who fell into the hands of robbers?"

The expert in the law replied,

"The one who had mercy on him."

verse 25-37

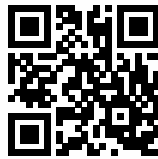
NEW MISSION PROJECT EVENT!

Host a Puzzle Palooza

to support the mission of MBCH!

Calling all puzzle enthusiasts!

Organize a Puzzle Palooza and help raise awareness and funds for the MBCH. This unique fundraising event is a fantastic way to bring people together for a night of friendly competition and giving back.



Visit mbch.org/missionprojects to see step by step instructions on how to organize this event!



Join Us in Serving God's Children

MISSION PROJECTS

Every year, churches throughout the state support the ministry of MBCH by participating in one of many mission projects. These projects vary greatly but all have the same mission - to partner with MBCH to show love and provide for children, youth and families throughout the state in crisis. Contact your MBCH Regional Representative to learn more or visit mbch.org/missionprojects.

BE hope
healing
restoration

Download your copy of the Mission Projects booklet at mbch.org/missionprojects



Honorariums & Memorial

Honorariums

Ben King and family by Mr. David Pierson (Village of Loch Lloyd)
Diane Kautzman by Mrs. Betty Carlson (Willow Springs)
Russell Martin by Dr. and Mrs. Mayburn Davidson (Walnut Shade)
Dr. Elmer (Mac) and Nancy McCully by Ms. Angela McCully (Farmington)
Kyler and Erik Saulsbury by Mrs. Phyllis Saulsbury (Kansas City)
Mary Singleton by Mr. and Mrs. Dwight Singleton (Saint Charles)
Mr. and Mrs. Dan Wies by Mr. and Mrs. Terry Wies (Wentzville)
Mr. and Mrs. Jon Wies by Mr. and Mrs. Terry Wies (Wentzville)

Memorials

Ruby Anderson by Mrs. Marguerite Brown (Macon)
Robert and Mary Barton by Mr. and Mrs. Charles Brown (Louisiana)
Ambrose Blair by Mr. and Mrs. Patricia Streicher (Ozark)
Bob Boyer by First Baptist Church-Sikeston (Sikeston)
Erma and Ken Brown by Mr. and Mrs. Charles Brown (Louisiana)
Russell Brown by Mrs. Marguerite Brown (Macon)
Penny Browne by Ms. Virginia Barkey (Union)
Kit and Brian Carson by Ms. Shelda Carson (Saint Joseph)
Jolene Carter by Ms. Marla Wolff (Bunker Hill, Illinois)
Charlene Chism by First Baptist Church-Sikeston (Sikeston)
Doris Cimaglia by MeadowBrook Country Club (Ballwin); Mr. Kevin Farris (Overland); Mr. and Mrs. John Herring (Foley); Ms. Lisa Kempf (Saint Peters); Mr. Douglas Lincoln (Cape Girardeau); Ms. Betty Sewell (Cape Girardeau); Ms. Nikki Gomer (Saint Charles)
Lucille Cogdill by Mr. Garnall Cogdill
Lucy Miller and Shirley Dugal by Rev. and Mrs. Kevin L. Miller (Farmington)
Beverly "Bev" Corum by Ms. Marilyn Barber (Kearney); Mr. Jack Barr (Kearney); Mr. James Eldridge (Kearney); Mr. and Mrs. Michael Farmer (Kearney); Ms. Jennifer Jones (Kearney); Ms. Kathy Lee (Kearney); Mr. and Mrs. Jerry Maxwell (Kearney); Mr. Kenneth L. Reno (Holt); Mr. and Mrs. George Termini (Kansas City); Ms. Charlotte Cates (Kearney); Mr. Jodi Denney (Washington)
Sandi Couch by First Baptist Church-Sikeston (Sikeston)
Loretta Crouch by Mr. and Mrs. Eric Shoenberger (Verona)

Richard Daily by Ms. Sara Brittingham (Union)
Brian Dehn by Mr. and Mrs. George Dehn (Marshall); Mr. and Mrs. Clarence D. McKinney (Jefferson City)
Gerald Dinkins by First Baptist Church-Sikeston (Sikeston)
Vivi and Dwight by Ms. Claudia Day (Charlotte, NC)
Nancy Early by First Baptist Church-Sikeston (Sikeston)
Jane Evans by Ms. Suzanne Alsup (Sikeston)
Eva Marie Fitz by Mrs. Nancy Hinrichs (St. Louis)
Charles Freed by First Baptist Church-Sikeston (Sikeston)
Dean and Joyce Hendricks by Ms. Holly Dugan (San Antonio, TX)
Nancy Furgerson by Ms. Sarah Cole (St. Louis)
Dennis Gamblin by First Baptist Church-Sikeston (Sikeston)
Steven Gamblin by First Baptist Church-Sikeston (Sikeston)
Doris Gibson by Mr. and Mrs. Luther Abbott (Doniphan)
Wallace T Glanville by Mrs. Carolyn K. Glanville (Shawnee, KS)
Kathryn Greene by First Baptist Church-Farmington (Farmington)
Llyod and Dayta Grogan by Ms. Rebecca Grogan (Gladstone)
Frank and Cindy Hadder by Mrs. Laverne Hadder (New Madrid)
Travis D Hanna by Mrs. Carolyn Hanna (St. Louis)
Willia Hassell by First Baptist Church-Farmington (Farmington)
Dennis Hobbs by Mr. and Mrs. Jerry M. Tolbert (Strafford)
Dwayne Jett by Mr. and Mrs. Phillip Jett (Alton)
Sue Jones by Mr. James F. Harden (Kirksville)
Angela Keller by Washita Baptist Church (Farmington)
Kathryn Lawson by Macedonia Free Will Baptist Church (Purdy)
Matt Lawson by Mr. and Mrs. Earl Fruits (Nixa)
Joann Lupton by Mr. and Mrs. Dwain Moore (Ava); Ms. Erma Lupton (Ozark); Mr. William N. Shireman (Springfield)
Ken Lupton by Ms. Erma Lupton (Ozark); Ms. Mary Blacksher (Rogersville); Mr. William N. Shireman (Springfield)
Marcie Maloney by First Baptist Church-Sikeston (Sikeston)
John "Jr" Moore by Mr. and Mrs. Larry R. Babb (Wildwood); Mr. and Mrs. Donald Denney (Wildwood); Mr. Edward Shores (Eureka); Mr. and Mrs. Venable Houts

(Kirkwood); Mr. Joel K. Londeen (Wildwood); Always Faithful Small Group (Wildwood)
Ruby Morrow by Mr. James R. Morrow (Eldon)
William "Bill" Mueller by William and Mary Ann Ronan (St. Charles)
Bev Odell by Ms. Sarah Cole (St. Louis)
Carson Peters by First Baptist Church-Sikeston (Sikeston)
Robert "Bob" Petty by William and Mary Ann Ronan (St. Charles)
Freda Pyatt by Mr. and Mrs. Dennis D. Uzzell (Hartville)
Gary Raines by New Salem Baptist Church-Ionia (Ionia)
Orville Rector by Mrs. Charlene Rector (Higginsville)
Rosana Robert by First Baptist Church-Farmington (Farmington)
Caleb Robinson by Mr. and Mrs. James Robinson (Traverse City, Michigan)
Shirley Snodgrass by Mr. John Clark (Pacific Grove, CA)
Caroline Stokes by Mr. and Mrs. Gary Brown (Richland)
Edward (Tony) Swain by Ms. Cheyrl Newland (Kirksville)
Glenna Tatum by First Baptist Church-Farmington (Farmington)
Bobby Ward by First Baptist Church-Sikeston (Sikeston)
Dick Wakefield by Fisher Wood Fork Cattle, LLC (Hartville); Pledgeling Foundation (Venice, CA); Ms. Kirby Crisp (Mansfield); Mrs. and Mr. Rita Fera (Camdenton); Mr. and Mrs. Mike Fera (Camdenton); Mr. and Mrs. Armin Herrman (Hartville); Mr. Jeffrey Nickle (Springfield); Ms. Penelope Nickle (Springfield); Mr. Ronald Robertson (Conway); Ms. Janet Russell (Marshfield); Mrs. Carol Schreffler (Seymour); Mr. Glen Stigall (Hartville); Mr. and Mrs. Rob Still (Grovespring); Ms. Twana Turner (Hartville); Mr. and Mrs. Dennis D. Uzzell (Hartville); Mr. and Mrs. Carl Widner (Hartville)
Opal West by First Baptist Church-Farmington (Farmington)
Timothy Charles Williams by Mrs. Beverly Mattli (Fayette)
Helen Wilmoth by Mr. and Mrs. Gary Wilson (Olathe, KS)
Dwight Wood by Ms. Winnie Wood (Garden City)
David Wyatt by First Baptist Church-Sikeston (Sikeston)
Bob Patterson and Phyllis York by First Baptist Church-Sikeston (Sikeston)

**Honorarium and memorials received
November 1, 2024 - March 31, 2025.**



Missouri Baptist Children's Home

11300 St. Charles Rock Road

Bridgeton, MO 63044-2793

THE MESSENGER



In this issue:

- **President's Update**
- **Campus Needs & Ministry Updates**
- **2024 Annual Report**
- **MBCH News**

A Cooperative Program supported entity of the Missouri Baptist Convention

May 2025