

## Supporting Missouri's Foster Youth

For many, turning 18 is a celebration. But for nearly 600 Missouri youth who age out of foster care annually, it is often described as a "cliff." Without permanent family connections, 29% experience homelessness by age 21, and only 58% attain a high school diploma or GED by age 19.

MBCH is thrilled to announce the expansion of our Chafee Support Services into Western Missouri. This program empowers foster youth ages 14 and older with supportive case management and life-skills education. By providing a vital safety net we ensure the transition to adulthood isn't a solo journey.

### We Need Your "Village"

We invite your church to join our Community of Support—a network of local individuals and congregations dedicated to helping young people thrive.

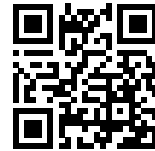
### How your congregation can partner with us:

- **Host a Class:** Provide space for life-skills training, such as financial literacy or health wellness.
- **Meet a Specific Need:** Help fund "one-time" essentials like car repairs, apartment deposits, or laptops for college.
- **Provide a "Soft Spot":** Build stable, long-term relationships through mentorship and community connection.
- **Become a Representative:** Volunteer as a trained representative to meet and mentor older youth in your local community.

Most volunteer roles require no special training—just a heart to serve. Whether you provide a meeting space or a listening ear, you are helping a young person move from crisis to community.

### Get Involved Today

Join us in equipping these resilient young people for a successful future. To learn more or to volunteer, please contact Jason Myers at 314.739.6811, email [jason.myers@mbch.org](mailto:jason.myers@mbch.org), or visit [mbch.org/chafee](http://mbch.org/chafee).



Chafee Support Services

## Introducing Day Haven

For years, Country Haven in Peculiar has been a place where adults with intellectual and developmental disabilities (IDD) find more than just care—they find a home. God is expanding this vital ministry with the launch of Day Haven.

Located on the Byrne Campus, Day Haven is a new Day Hab program designed to serve up to 49 adults from the community. We are currently transforming the former Residential Boys Home into a vibrant, Christ-centered hub featuring themed spaces for Life Skills, Creative Arts, and Sensory Wellness.

"Our goal is not simply to provide care," says Program Director Dawn Hensley, "but to foster a space where every individual feels valued, respected, and honored."

### How You Can Partner With Us

We invite your church, Sunday School class, or family to help us bring this vision to life before our Summer 2026 opening:

- **Adopt a Room:** We are seeking churches to "adopt" and furnish specific themed rooms. This is a powerful way for your congregation to see their direct impact. To learn more about room adoption, please contact Dawn Hensley at 816-779-5173.
- **Shop the Wishlist:** You can provide tangible items—from art supplies to sensory tools—directly through our Day Haven Amazon Wishlist. Every gift helps us equip these spaces for our participants.
- **Pray:** Please join us in praying for the construction teams and the individuals who will soon find a place of belonging here.

Your support ensures that these incredible image-bearers of God have a "haven" where they are celebrated and empowered.

Scan the QR code to shop the Wishlist or visit [mbch.org](http://mbch.org) to give today!



Amazon List

Country Haven Day Hab

### Reflecting on 2025 and Stepping Toward a Healthy Future

At MBCH, the turn of the calendar is a sacred moment to reflect on all the Lord allowed us to accomplish as a part of His Kingdom work. While our mission remains rooted in the same Gospel calling, the challenges facing today's families are evolving. As we step into 2026, we are asking the Lord for the wisdom to not only care for children in the system, but to explore new ways of strengthening the home before the system is ever needed.

### Honoring a Year of Impact: 2025 by the Numbers

In 2025, the evidence of God's grace was found in the 2,793 children, youth, and families served by our dedicated team. This year was defined by meeting families where they are—whether providing a safe haven or the support needed to stay together.

- **Fostering Stability & Permanency:** We maintained 509 foster homes and licensed 164 new families, aiding 983 youth in our family foster care program and 195 in treatment family care. These efforts resulted in 210 "forever families" being identified for our clients.
- **The Power of Prevention:** Our preventive service programs effectively intervened for 157 families at risk, helping them find a healthier path forward and avoid the trauma of removal.
- **Specialized Residential Care:** Our reach included 8 youth in our therapeutic group home and 38 former foster care clients in transitional living apartments, alongside 31 residents in our IDD adult population on two campuses.
- **Maternity & Outreach Services:** The LIGHT House maternity home served 24 clients, with home-based pregnancy services impacting 595 lives. Additionally, we served 173 outreach participants and 106 counseling clients.

### Partnerships for a Stronger Future

We believe the most effective solutions are found when we come alongside the local church to provide "upstream" support.

- **Church & Community Engagement:** Last year, 271 churches were served by our team, providing Stewards of Children training for 291 individuals. Through CarePortal, we met 226 requests for resources, benefiting 493 children.
- **Faithful Stewardship:** We are grateful for our Foundation team, who helped generate over \$6,000,000 from our donor-based sources to ensure these ministries remain vibrant.

### New Solutions for Modern Challenges

Today's world requires a proactive approach. We are increasingly looking "upstream" to build resilient families through partnerships with the state and local organizations. In 2026, we are excited to implement:

- **The Chafee Program:** A specialized approach to supporting older youth in the Southwest and Northwest quadrants of our state.
- **The Day Haven IDD Program:** Launching in Peculiar, this program offers community integration and caregiver respite to help families stay connected.

As we implement these strategies, we covet your prayers for the wisdom to meet the needs of families in fresh, effective ways. Thank you for standing with us as we step into a year of proactive, life-changing ministry.

## Honoring Dr. Juston Gates

### A Legacy of Vision and Faith

The Missouri Baptist Children's Home (MBCH) family is mourning the loss of President Dr. Juston Gates, who passed away in April following a tragic accident. Though his tenure was brief, his impact was profound, characterized by a "big picture" vision and a deep heart for Missouri's most vulnerable.

Dr. Gates was a tireless champion for our ministry, strengthening ties between our mission and Missouri's churches and civic leaders. He viewed his role as a calling to advocate for the restoration of families and the protection of children with Christ-like compassion. Among the staff, he was known as a steadfast supporter who encouraged innovation while never losing sight of the individual lives in our care. His legacy is defined by this spirit of innovation and an enduring commitment to honoring God by serving others.

To ensure the continuity of this work and maintain compliance with Missouri State Department of Social Services (DSS) requirements, MBCH corporate protocol has been enacted. Executive Vice President Andy Helton has assumed the role of Acting President, ensuring our legal responsibilities and daily care services remain uninterrupted.

In a final testament to his character, Dr. Gates continues to care for the vulnerable even in death. In lieu of flowers, the family requests memorial contributions to the Missouri Baptist Foundation for the Juston Gates Fund. These gifts will continue his life's work by benefiting MBCH, St. Jude Children's Hospital, and educational scholarships.

Send memorial contributions to:

Missouri Baptist Foundation, c/o Juston Gates Fund  
PO Box 1113, Jefferson City, MO 65102

# Now Streaming: the **MBCH** podcast Turning Compassion into Action

Missouri Baptist Children's Home has always been a voice for the vulnerable, and now that voice is available whenever you listen to podcasts. Having launched on May 18, The MBCH Podcast is our newest resource designed to help you turn your heart for others into tangible action.

Each episode, we share inspiring stories, practical tools, and real-world ways you and your church can step into the lives of children and families across Missouri. From the nuances of foster care and adoption to the life-changing impact of CarePortal, this show is about equipping you to bring hope, healing, and restoration to your own backyard.

Don't miss our debut episode featuring an interview with Britton Carter, Pastor at Fee Fee Baptist Church. Pastor Carter joins us to discuss how local congregations can effectively stand in the gap for those in need.

Whether you are a pastor, a volunteer, or someone who simply cares, you have found the right place. Join us as we make a difference—**one church, one family, and one story at a time.**

## How to Listen

On Your Phone: Search for "The MBCH Podcast" on Apple Podcasts, Spotify, or your favorite podcast app.

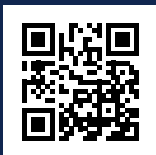
Online: Visit [mbch.org/podcast](http://mbch.org/podcast) to stream episodes .

Subscribe: Hit the "Follow" or "Subscribe" button so you never miss an episode!

**Spotify**



**Apple**



[mbch.org/podcast](http://mbch.org/podcast)

New Episode Every Other Week!

## Thank you!

A special THANK YOU to Clay and Tina Cooper, the team at Clay Cooper Theater, the Branson entertainers, and all those that attended the Branson Stars event on April 18. We had a wonderful event and raised over \$34,000!

Make plans to join us next year!

## mbch **Upcoming Events**

### Strawberry Festival

June 13, 2026

First Baptist Church, Arnold, MO

For more information contact Special Events:  
[specialevents@mbch.org](mailto:specialevents@mbch.org)  
[mbch.org/strawberry-festival/](http://mbch.org/strawberry-festival/)  
417.410.9033

**Learn More**



### Register



### Ozarks Berry Festival

July 18, 2026

Macedonia Baptist Church, Springfield, MO

For more information:  
[mbch.org/ozarks-berry-festival/](http://mbch.org/ozarks-berry-festival/)

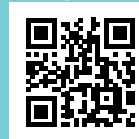
### Charitable Sew Days Events

July 23, 2026

The Quilted Cow, Raymore, MO

For more information contact Special Events:  
[ben.king@mbch.org](mailto:ben.king@mbch.org)  
[mbch.org/sew-days/](http://mbch.org/sew-days/)

**Register**



August 6, 2026

The Quilted Cow, Raymore, MO

For more information contact Special Events:  
[ben.king@mbch.org](mailto:ben.king@mbch.org)  
[mbch.org/sew-days/](http://mbch.org/sew-days/)

**Register**



August 20, 2026

The Quilted Cow, Raymore, MO

For more information contact Special Events:  
[ben.king@mbch.org](mailto:ben.king@mbch.org)  
[mbch.org/sew-days/](http://mbch.org/sew-days/)

**Register**



### Joyful Retreat

September 18-20, 2026

Fri, 3 pm - 9 pm; Sat, 9 am-9 pm;  
Sun, 9 am - Noon

For more information:  
[dawn.hensley@mbch.org](mailto:dawn.hensley@mbch.org)  
Register: [mbch.org/joyful-retreat](http://mbch.org/joyful-retreat)

**Register**



### Stitched in Love Retreat

September 25-26, 2026

The Quilted Cow, Raymore, MO

For more information contact Special Events:  
[ben.king@mbch.org](mailto:ben.king@mbch.org)  
[mbch.org/sew-days/](http://mbch.org/sew-days/)

**Register**



### Branson Stars

April 10, 2027

10 am - 12 pm

Clay Cooper Theater, Branson, MO

For more information contact Special Events:  
[specialevents@mbch.org](mailto:specialevents@mbch.org)

Buy tickets at: [mbch.org/branson-stars](http://mbch.org/branson-stars)

**mbch.org/events**

**Register**



## Lives Changed in 2025

through MBCH Children & Family Ministries and The LIGHT House



**2,793**

Children, youth and families served



**28**

Professions of Faith and Baptisms  
by children and youth in  
Residential programs

**Thank you for  
your prayer and  
support in 2025!**



## 2025 Statistical Report

**47** Counseling Center  
Agency-Based Clients



**509**

Foster/Adoptive/Relative/  
Kinship Homes Maintained



**8**

Youth served in  
Therapeutic Group Homes



**38**

Clients served through  
Transitional Living



**164**

New Families Licensed  
18 Foster Families &  
146 Relative Families

**59** Counseling Center  
Community-Based Clients



**489**

Mothers and Babies  
served through  
Pregnancy Services

**983** Youth/Family served  
in Family Foster Care



**195** Youth served in  
Treatment Family Care

Preventative Care Families

**157**



101 Home Visitation Services  
56 Stronger Family Services



**31**

Clients/Families served  
through Intellectually  
& Developmentally  
Disabled Services



**210**

"Forever Families"  
identified  
for children.

## Church Engagement



**2,490**

Youth and families  
served



**271**

Churches served  
by Church Engagement

**291**

Trained in  
Stewards of Children



CarePortal®

**6** Churches Added

**226** Requests Met

**493** Children Served

**HOPE • HEALING • RESTORATION**

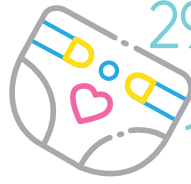
24

Maternity Home Clients

9 Mothers, 10 Toddlers & 5 Infants



Items Distributed



29 Carseats & Pack n Plays

668 Packages of Diapers

1,416 Other Items



173

Outreach Participants

367.5

Volunteer Hours

Number of Volunteers: 86



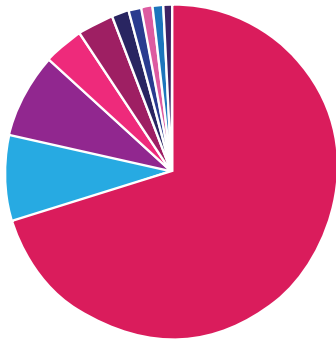
233 Classes Offered

26 Group Classes



106

Home Based Services



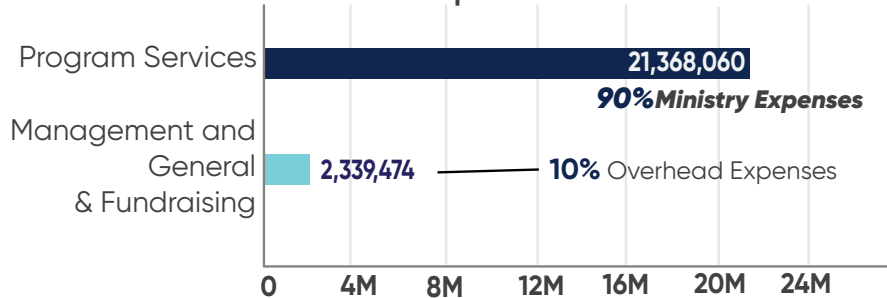
2025 Total Revenue/Support

\$24,232,254

- Program Services: \$14,657,062
- Contributions: \$3,352,213
- Endowment/Investments: \$2,624,709
- Bequest/Wills: \$1,580,105
- Cooperative Program: \$654,727
- Gifts from Churches: \$560,737
- Other Revenue: \$380,877
- Birthday Offerings: \$208,044
- Missouri Mission Offering: \$129,825
- Special Events: \$83,955

## MBCH Family of Corporations 2025 Financial Report

### 2025 Expenses



Unrealized gains on investment: \$3,893,372

**"And God is able to bless you abundantly, so that in all things at all times, having all that you need, you will abound in every good work."**  
2 Corinthians 9:8

Through God's gracious provision we have been blessed to be able to invest our excess revenue in order to ensure that funding is available for future Kingdom work, to the glory and praise of our Lord and Savior, Jesus Christ.

## mbch CONTACT INFORMATION

**MBCH Corporate**  
11300 St. Charles Rock Road  
Bridgeton, MO 63044  
800.264.6224  
info@mbch.org



support mbch:  
[www.mbch.org/give](http://www.mbch.org/give)

## mbch REGIONAL REPRESENTATIVES

**Ben King, MSCM, CGPA**  
West/Northwest Region  
816.472.9072  
ben.king@mbch.org

**Joe Nogalski, MDIV, CPGA**  
Southwest Region  
816.317.4430  
joe.nogalski@mbch.org

**David McMullin, CGPA**  
Central Region  
573.259.3971  
david.mcmullin@mbch.org

**Kenny Vawter, CPGA**  
Southeast Region  
573.241.1113  
kenny.vawter@mbch.org

**Brian Barber, MACE**  
Northeast Region  
660.672.9327  
brian.barber@mbch.org

# Honorariums & Memorials

## Honorariums

**Bryan Allen** by First Baptist (Cameron)  
**Terry Beasley** by First Baptist (Cameron)  
**Doris Brizendine** by Timothy Brizendine (Jamestown)  
**Steve Howell** by First Baptist (Cameron)  
**Mary Mashburn** by Leigh O'Kane (Lees Summit)  
**Micah Roberts** by First Baptist (Cameron)  
**Sarah Sides** by Shannon Penna (Peoria, AZ)  
**Mary Singleton** by Thomas Day (Florissant)  
**Darren L. Weihe** by Leland Weihe (St. Louis)  
**Billy, James, Clara and Lexia** by James Fitzgerald (Newbern, TN)

## Memorials

**Robert and Mary Barton** by Charles Brown (Louisiana)  
**Carroll Beard** by First Baptist (Sikeston)  
**Kobly Belcher** by First Baptist (Sikeston)  
**Margaret Bell** by Janet Gravitt (Naples, FL)  
**Marjorie Ann Bolin** by Darwin Bears (Macon)  
**Christina Bradley** by Second Baptist (Poplar Bluff)  
**Judy Brookshire** by First Baptist (Sikeston)  
**Debra Brown** by Chris Brown (Pittsfield, IL); Howland Brothers (Pearl, IL); Pat Fortney (Palatine, IL)  
**Ken and Erma Brown** by Charles Brown (Louisiana)  
**Russell Brown** by Marguerite Brown (Macon)  
**Bob Burns** by T.E.L. Sunday School Class (Webb City)  
**Gary Camp** by PEP - Macedonia Baptist (Springfield)  
**Chris Cantrell** by First Baptist (Sikeston)  
**Kit and Brian Carson** by Shelda Carson (St. Joseph)  
**Lavada Clark** by Bible Study Seniors (St. Joseph); Robert Roach (Faucett); Benton Class of 1960 (Faucett)  
**Lucille Cogdill** by Garnall Cogdill (Strafford)  
**John Condra** by C. David Cooper (Strafford); Second Baptist (Springfield)  
**Wanda Couch** by T.E.L. Sunday School Class (Webb City)  
**Sharon Dean** by First Baptist (Sikeston)  
**Brian Dehn** by Bea Dehn (Marshall)  
**Lola Duffin** by Mary Jan Smithey (Mexico)  
**Lindell Eakins** by First Baptist (Sikeston)  
**Douglas Fears** by First Baptist (Sikeston)  
**Lillian Gaddis** by First Baptist (Shell Knob); Trent Roger (Shell Knob)  
**Forrest Ganther** by First Baptist (Eldon); Michael Proctor (Eldon); Katrina Mawhiney (Urbana); Pleasant Ridge Free Will Baptist (Tunas); Kathy Herx (Eldon)  
**Jackie Gentry** by Roger Norris (Overland Park, KS); Titan Title and Closing, LLC (Tulsa, OK)  
**Lorene Gladden** by Larry Chadwell (Waynesville); Hickory Hills Baptist (Waynesville); Edwin Somers (Waynesville); Freddie York (Richland); Dan Graves (Laquey); Carl Gladden (Waynesville); Woodlane Rentals, LLC (St. Robert); Pledgeling Foundation (Venice, CA)  
**Laura "Diane" Gray** by First Baptist (Farmington)  
**Ruth Green** by Mark Shepherd (Walhalla, SC)  
**Lloyd and Dayta Grogan** by Rebecca Grogan (Gladstone)  
**Charlie Hawkins** by First Baptist (Sikeston)  
**Clyde Heidel** by Roger Trent (Shell Knob); John Rohlman (Willard)  
**Jerry Herring** by PEP - First Baptist (Sikeston)  
**Leta Mae Higgins** by Richard Larimore (Washington); Linda Ellis (Tipton); Johnny Roush (California); Tammy Meisenheimer (California); Richard McDonald

(Jefferson City); Joy Lawson (Fortuna); Kenneth Kuttenkuler (Sedalia); Fred Franken (Springfield); Jack Knipp (Tipton); Larry Higgins (Tipton); Rosalyn Heidbreder (California); Harold Allen (California); Walter Duvall (California)  
**Everett Holden** by Billy Bayless (Carthage)  
**Gene Holden** by Webb Chapter #204, Order of the Eastern Star (Webb City)  
**Ethlyn Jane Hudson** by Steve Hamilton (Cainsville); Gary Lynch (Bolivar); Mary Meinecke (Rock Port); Ken Keith (Cassville); Vic McQuay (Bolivar); Lois Mueller (Bolivar); Dawn Misenhelter (Richmond); Leah Sweeney (High Ridge); Stuart Perkins (Malvern, AR); Porter Harryman (Bolivar); Tom Hansel (Bethany); Pledgeling Foundation (Venice, CA)  
**Ed Humphrey** by Kathleen Knetzer (Carlinville, IL); John Greenlee (Dixon); Deborah Graves (University Place, WA); Christopher Debroeck (Jefferson City)  
**Jim Irwin** by David Clark (Mount Vernon)  
**Joshua Jinks** by First Baptist (Sikeston)  
**Marjorie Kenison** by Gary Bushmeyer (Quincy, IL)  
**Zelma Larimer** by Lois Gillispie (Buffalo)  
**Doris Laughton** by First Baptist (Sikeston)  
**Doris Long** by First Baptist (Mexico); Betty Jo Sydenstricker (Mexico); David Peacock (Benton City); Harold Wilson (Ladonia); Paul Carlson (Mexico); David Crawford (Mexico); Barry Knipfel (Mexico); Lura Williams (Mexico); Benny Newson (Mexico)  
**Pat Lorenz** by Darryl Lace (Marshfield); Geraldine Cook (Seymour); Norma Barnett (Ozark); Ward Lawson (Marshfield); David Carpenter (Seymour); Alfred Penny (Springfield); Tom Jennings (Springfield); Jack Mingus (Springfield); First Baptist (Seymour)  
**Melody Lyell** by First Baptist (Sikeston)  
**Mary Mashburn** by Sherry Mashburn (Springfield); Linda Bishop (Sparks, NV); A Turner (Kansas City)  
**James J Maulsby** by Todd Six (Knoxville, IA); Carole Gullion (Knoxville, IA); David Gottman (Macon); Hugh Teter (Macon); Robert Fredman (Jacksonville); Nancy Probasco (Green City); Mike McCollough (Knoxville, IA); Larry Murdock (Macon); Jim Burns (Anabel)  
**Leo Carel Maynard** by Second Baptist (Poplar Bluff)  
**Lucy Elizabeth Miller** by Kevin Miller (Farmington)  
**Luetta Mae Moore** by Vincent Small (Ash Grove); Jeffrey Pendergrass (Everton); Victoria Moore (Springfield); Virginia Netzer (Springfield); Melba Donald (Ash Grove); Delberta Creed (Walnut Grove)  
**Randy and Terri Beth Moore** by Toni Glenn (Eden Prairie, MN)  
**Ruby Morrow** by James Morrow (Eldon)  
**Robert Murdock** by First Baptist (Sikeston)  
**Don Newton** by First Baptist (Sikeston)  
**Milford R Olson** by Jim Kershner (Adrian)  
**Glenda Orahood** by Alan Byrd (Fuquay Varina, NC); Dale Whitaker (Thayer); Robert Currier (Linn Creek); Calvin Bowers (Thayer); Ruth Stevens (Thayer); Roy Raynor (Benson, NC)  
**Shirley Ann Parker** by Washita Baptist (Farmington)  
**Monroe and Beth Perkins** by Monroe Perkins (Sweet Springs); Kristie Price (Marshall); Earl Wright (Blackburn); Gary Coslet (Marshall); Carl Colson (Sweet Springs); Brent Murphy (Houstonia); William Maupin (Marshall); Trevis Rapp (Sweet Springs); Randall Brandt (La Monte); Greg Guier (Sweet Springs); Darrell Brumit (Marshall); David Kueker (Marshall); Ann Wright

(Marshall); Preston Hisle (Miami); Ronald Higgins (Houstonia); Todd Marshall (Malta Bend); Matthew Kueker (Marshall); Ruth Roscher (Sweet Springs); Stephen Tuck (Marshall); Jeremy Fitzwater (Malta Bend); Larry Zimmerschied (Sweet Springs); Michael Martin (Marshall); Robert Peterson (Marshall); Jeffrey Sims (Sweet Springs); Joseph Taylor (La Monte); Sonya Stickels (Marshall); Steven Perkins (Sweet Springs); Monroe Perkins (Sweet Springs); Rick Toliver (Marshall)  
**L.B., David and Rodney Powers** by Dorcas Powers (St. Louis)  
**Margaret Riffle** by James Watson (Lees Summit); Dave Adney (Garden City); Rick Benware (Urlich); Berle Andes (Garden City); Kathy Henley (Pleasant Hill); Thomas Burnfin (Holden); Carrol Stout (Holden); Michael Gilvin (Garden City); Roger Orr (Garden City)  
**H.R. Ronan** by William Ronan (St. Charles)  
**JoAnne Royer** by Norman Hicks (Jefferson City); Russell Crumbley (Conway, AR); James Royer (Jefferson City); Steve Bullard (Lake Placid, FL)  
**Kit Royer** by Paul Dickinson (Conway, AR)  
**Margaret and Hervil Satterfield** by Roger Satterfield (Oldfield)  
**Sarah Schieber** by Pledgeling Foundation (Venice, CA); American Legion Auxiliary Tiry J Ford Unit 21 (Independence); Samuel Maynor (Pleasant Hill); Eugene Uptmor (Windor, IL); Dean Bradshaw (Pleasant Hill)  
**Mark and Helen Senter** by Marla Senter Morris (Houston, TX)  
**Doris Sharp** by PEP - Macedonia Baptist (Springfield)  
**Lee Shell** by First Baptist (Sikeston)  
**Beth Snowden** by Walter Sullivan (Lees Summit)  
**Mary Ann Spurlock** by First Baptist (Sikeston)  
**Shelvie Stephens** by Shelvie Stephens (Poplar Bluff)  
**Samuel Tanner** by First Baptist (Sikeston)  
**Delaine Urbanek** by William Ronan (St. Charles)  
**Loy M Vanderpool** by Dorothy Vanderpool (Kirbyville)  
**Jack Verts** by New Salem Baptist - Saline County (Marshall)  
**Mary Washburn** by Ed Summers (Menomonee Falls, WI)  
**Peggy Weathers** by First Baptist (Sikeston)  
**Jean Weaver** by PEP - Macedonia Baptist (Springfield)  
**Jay Tim Whetstine** by John Slatten (Springfield); Shady Grove Club (Cabool); Drew Honeycutt (Mountain Grove); Scott Gregory (Cabool)  
**Beverly White** by Alice Burris (Bernie)  
**Mona White** by Phebean Sunday School Class (Marceline)  
**John F Wilkens** by Gerald Hutton (Neosho); Delbert McGuire (Joplin); Robert Culver (Raymore); Bill Hare (Oronogo); 4 W Metal Building Supply CO INC (Oronogo); Marcia Grundy (Carthage); Alan Egbert (McCune, KS); Neil Ison (Lenexa, KS); R. Edward Culver (Bourbon); Christine Meadows (Saginaw); John Morris (Webb City); David Collard (Webb City)  
**Earl Williamson** by Judith Doosti (Fort Worth, TX); Joseph Vanzant (Blue Eye); Earl Williamson (Kansas City); Stephen Dunn (Fairway, KS); Ron Robinson (Cedarcreek)  
**Linda Wohlbold** by Larry Kimbel (Mexico); Don Mason (Mexico); Mary Bail (Boonville); Keith Bail (Boonville); David Heim (Avon, IN); Ginny Raney (Mexico); James Lowry (Mexico); Garold Hood (Hallsville)  
**Edwina "Deannie" Young** by First Baptist (Billings)

**Honorariums and Memorials received  
November 1, 2025 - March 31, 2026.**

### Hygiene Items

- Hand soap (pump)
- Products and supplies for African American hair: Edge control gel, Edge control brush/comb, military brushes, wave cap/durag, satin bonnets
- Lotion
- Shampoo & conditioner (male & female)
- Axe men's gift sets
- Bath & Body Works gift sets

### Baby Items

- Diapers (size 1, 5, 6)
- Pull ups (girls 2T-3T, 3T-4T, 4T-5T)
- Baby wipes
- Baby wash/shampoo
- Diaper cream
- Plastic baby bottles
- Baby lotion
- Baby brushes/combs/nail kits
- Baby bath towels/wash cloths
- Crib sheets
- Swaddle blankets
- Baby bottle brushes
- Educational/developmental toys (no stuffed animals please)
- Sleepers/onesies/clothes 0-3 mos. & 9-12 mos (girl & boy)

### Cleaning Items

- Dish soap
- Lysol spray

### Household Items

- Pizza pans
- Bath towels, hand towels, wash cloths
- Cookie sheets
- Full size sheet sets (male & female)
- Queen size sheet sets (male & female)
- Blankets - bed size for teens (male & female)

### Clothing

- Leggings (all sizes)
- Sweatpants (male/female - all sizes)
- T-shirts (male and female, short sleeved, sizes small-2X)
- Girls underwear 5, 6, 10, 16)
- Women's underwear (4, 5, 6, 10)
- Boys underwear (4/5, 6/7, 8/10, 12/14, 14/16)
- Men's underwear (M, L, XL, 2X)
- Pajamas: (boys/girls/men/women - all sizes)
- Socks (boys, men's ankle or no show - white or black)

### Other

- Adult coloring books

For questions or to drop off/mail items, or to volunteer, contact Von Hulin at [von.hulin@mbch.org](mailto:von.hulin@mbch.org) or 314.739.6811, ext. 1368.

### New Life on Troost

Spring has arrived, and at The LIGHT House, the season of renewal is more than just a change in weather—it is a celebration of our new home. Since our official Ribbon Cutting in January, we have fully settled into our independent location on Troost, and the impact has been immediate.

Our new space was strategically chosen to better serve our families. Being situated near partner social service agencies and directly on the busline has removed barriers to access to our services, while our more functional layout allows our programs to flourish.

The community response has been incredible:

- **Engagement:** Through our monthly Coffee Connections, we are welcoming neighbors and partners into the ministry to see our mission in action.
- **Connection:** We are seeing deepened relationships as both returning families and new enrollees find support within our walls.
- **Environment:** Clients frequently share how “clean and fresh” the new space feels, providing a dignified atmosphere for growth.

There is a unique joy in hearing the pitter-patter of little feet across our new wood floors. As the trees blossom outside, we are grateful for the “new life” blooming inside The LIGHT House. We invite you to join us for a future Coffee Connection to experience this exciting new chapter firsthand! [mbch.org/coffee-connections](http://mbch.org/coffee-connections)



## Needs List | Home Visitation Services

Help is needed to support Home Visitation Services families. This program supports families with children ages birth to 5 years old.

- Baby wipes
- Books for infants through preschool age
- Sensory toys
- Developmental toys for infants through 5 years old
- Baby Wash/Shampoo
- Diaper rash cream
- Baby bottles (new and no glass)
- Swaddle blankets
- Onesies/sleepers NB through 24 months
- Playdough
- Bubbles

For questions or to make arrangements to mail or drop off items, call the Byrne Campus in Peculiar (816) 779-5173.

## Client Needs



- Spring/summer clothing: boys & girls sizes 6 months-6T
- Hand soap
- Ethnic shampoo/conditioner- Cantu brand
- Body wash for adults
- Coconut oil - unrefined
- Laundry detergent
- Shaving cream
- Body lotion
- Hair combs
- Hair brush
- Hair accessories
- Deodorant
- Baby wash/shampoo
- Baby lotion
- Children's toothbrush
- Children's toothpaste

### Amazon List



### For Item Pick Up:

Ben King  
[ben.king@mbch.org](mailto:ben.king@mbch.org)  
816.472.9072



**Missouri Baptist Children's Home**

11300 St. Charles Rock Road

Bridgeton, MO 63044-2793

# THE MESSENGER



## Annual Report **ISSUE**

- 2025 Annual Report
- New Ministry Update
- Moving Forward in Faith
- Ministry Needs Lists & Upcoming Events

A Cooperative Program supported  
entity of the Missouri Baptist Convention

**May 2026**